



Engineering progress
Enhancing lives

Our crew stands behind you.

Trusted PEXa plumbing system with
choices that set you up to win big.
na.rehau.com/plumbing





Our crew stands behind you.

We get it. Our pros are determined to help you find the right fit. Let us stand watch over your livelihood and honor your promises. With relationships built for the long-haul, our word is as good as yours.

Our trusted PEXa plumbing system has choices that set you up to win big. Pair RAUPEX® UV shield pipe with the exclusive EVERLOC+® compression-sleeve fitting technology, the fastest available installation method, or the standard F1960.

Your time is valuable and we know it: Stay on schedule, avoid rework and ace tricky installations with our flexible system.

RAUPEX[®] UV shield pipe

A flexible, durable, cost-effective alternative to copper and other polymers, our RAUPEX UV shield PEXa pipe offers fast, easy installation.



**1-year UV
warranty**

Best-in-class



Easily bend RAUPEX instead of using elbows to make directional changes or navigate crowded mechanical chases, saving time on labor and money on fittings.

- Produced using the high-pressure peroxide method for cross-linked polyethylene (PEXa) in accordance with ASTM F876, F877, CSA B137.5 and PPI TR-3
- Certified to NSF 14/61 standards
- Meets requirements of ASTM F2023 for chlorine resistance
- Blue, red or white UV coating for quick identification of cold, hot and supply lines.
- Nominal sizes 3/8 to 2 in., CTS outside diameter, SDR9
- Available in 100 to 1,000 ft coils; 20 ft straight lengths
- For use with the EVERLOC+ compression-sleeve system, and the REHAU F1960 cold expansion fitting system.



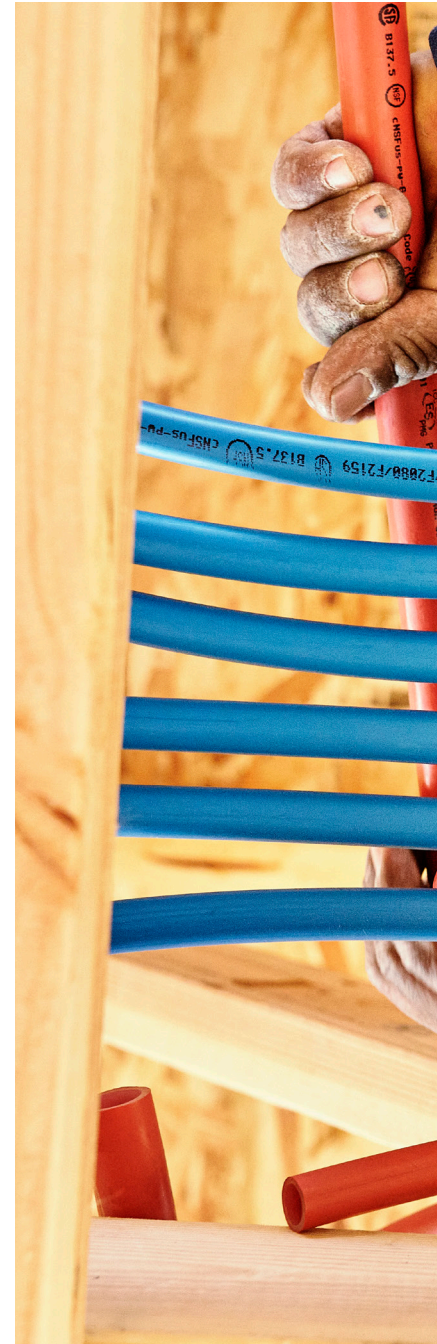
RAUPEX benefits:

- Optimum strength
- Enhanced temperature and pressure capabilities
- Better flexibility than PEXb or PEXc
- Tough to withstand jobsite conditions
- Uniform crosslinking

EVERLOC+[®] compression-sleeve fitting system

Join the fastest plumbing crew around.

EVERLOC+ will make others wonder how you finished that project ahead of schedule. The exclusive, compression-sleeve technology allows for immediate pressure testing - any size, in any temperature - making EVERLOC+ the industry's fastest plumbing installation method.





Security: 4x more secure

The patent-pending design of EVERLOC+ includes unique features like multiple sealing edges and a textured PEXa compression sleeve that ensure secure, worry-free plumbing installations, every time.



Control: 360° connection control

EVERLOC+ uses one consistent technique that your team will master after just a few connections. Expand. Compress. Done. You're in control, start to finish. No need for workarounds.

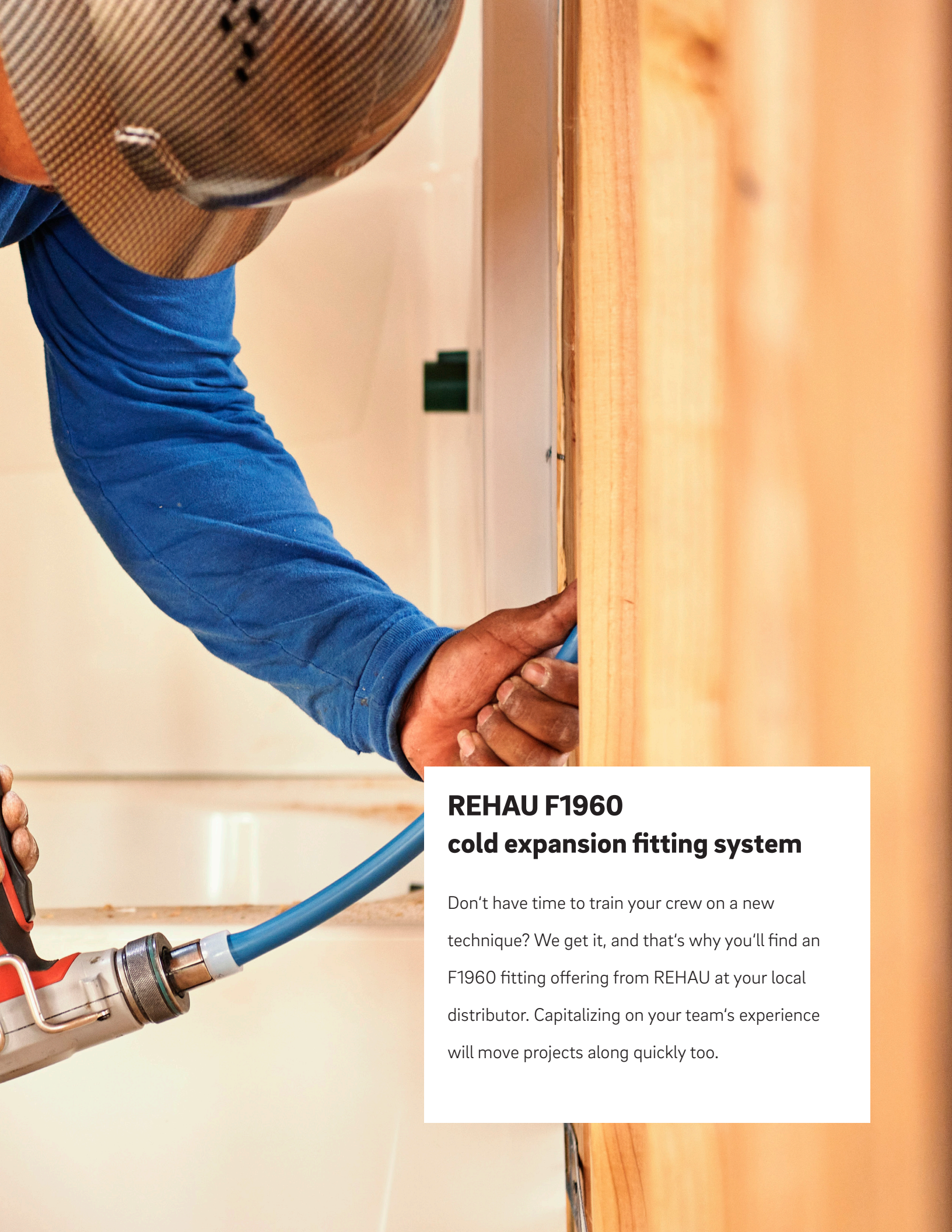


Speed: Up to 3x faster

No matter the circumstances, two expansions and one compression are all that's needed with EVERLOC+. That goes for all sizes and any temperature. An added bonus: There's no waiting time for pressure testing, unlike other common plumbing systems.

Our trusted PEXa plumbing system has fitting choices that set you up to win big.





REHAU F1960 cold expansion fitting system

Don't have time to train your crew on a new technique? We get it, and that's why you'll find an F1960 fitting offering from REHAU at your local distributor. Capitalizing on your team's experience will move projects along quickly too.

For more information, visit
www.na.rehau.com/plumbing

For updates to publication, visit na.rehau.com/resourcecenter

The information contained herein is believed to be reliable, but no representations, guarantees or warranties of any kind are made as to its accuracy, suitability for particular applications or the results to be obtained therefrom. Before using, the user will determine suitability of the information for user's intended use and shall assume all risk and liability in connection therewith.

© 2022 REHAU

xxx.xxx 06.2022