



**Engineering progress
Enhancing lives**

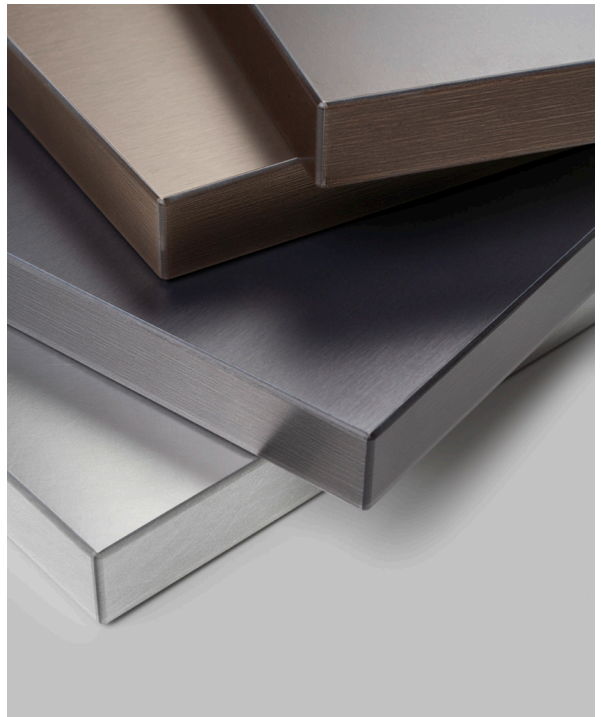
Cast in refinement

Inspired by metals, RAUVISIO ferro's cool-to-warm tones light a spark of sophistication in any space.

na.rehau.com/ferro



Light a spark of sophistication in your space with RAUVISIO ferro™ metallic PET surface. From all directions, eyes catch the warm or cool tones of this metal-inspired material. Glide your fingertips along its double-sided contours without leaving a trace.



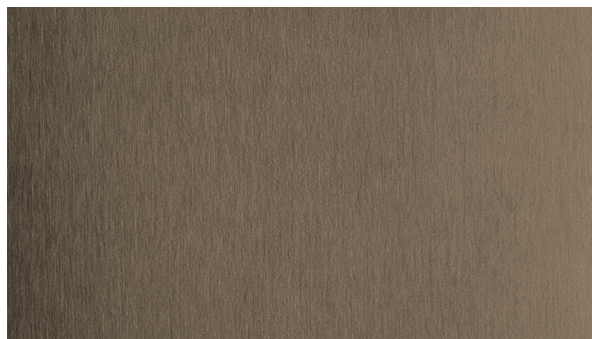
Features & benefits

- Soft touch finish
- Fingerprint, impact and scratch resistant
- Mold resistant
- Stain resistant
- Solid PET with no delamination
- Double-sided finished panel or cabinet door



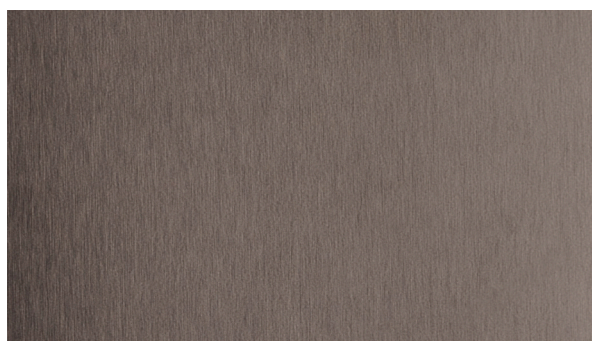
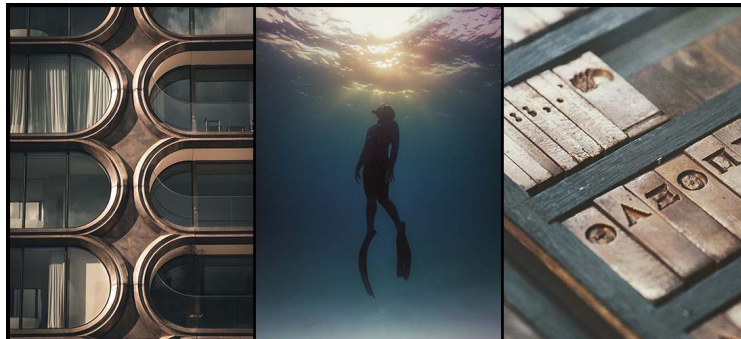
Everlasting colors.

Select from colors that represents the immortal. RAUVISIO ferro colors each denote a period in time that is fused intrinsically with our advancement as a modern society. Weigh in on the smooth and stately colors that transport you from carriage to car in the blink of an eye.



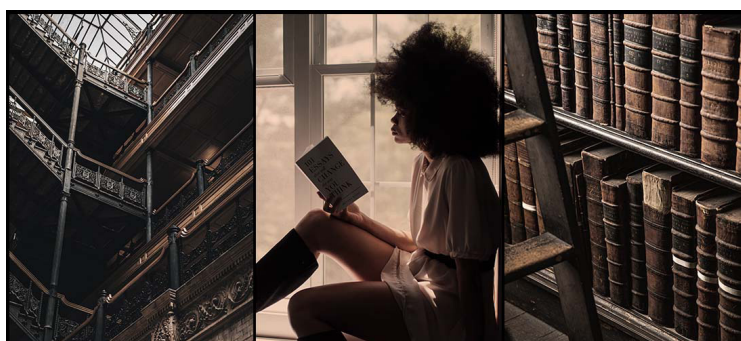
Aegean Anchor

2263L



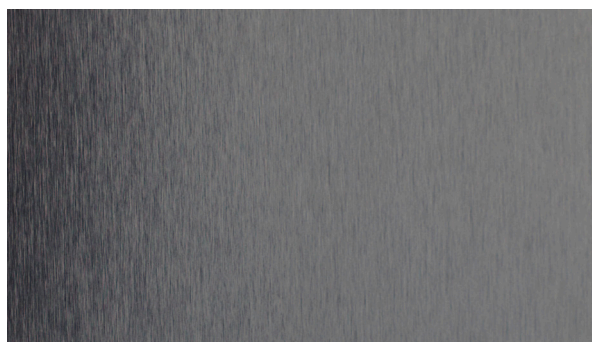
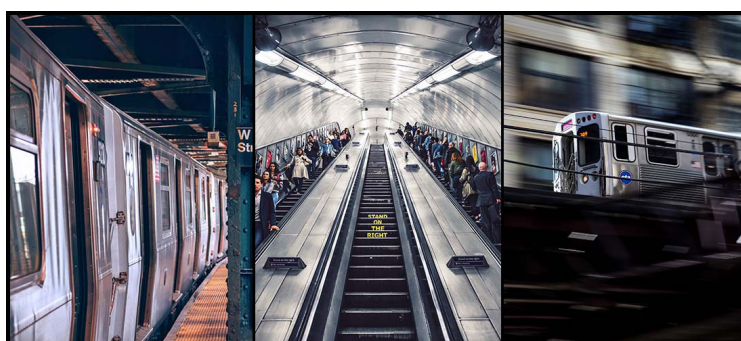
Gilded Arrow

2265L



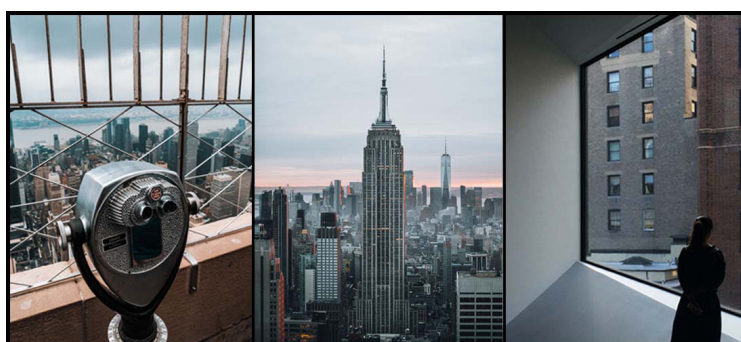
Metro Motion

2264L



Empire Skyline

2266L



RAUVISIO ferro technical information

Celebrating the elemental power of forged metal, RAUVISIO ferro metallic PET surface is highly touchable and elegant. Comprising inseparable layers of metallic color, secured between transparent layers, finished with a lacquered metallic print, this surface offers rich color and depth perspective for an enduring like-new appearance. More resilient than metal foil laminates, which can easily pierce or dent, the solid PET composition is suitable for high-moisture environments and exceptionally resistant to fingerprints, scratches, stains and mold. Offered as boards and edgeband or fabricated panels and cabinet doors, RAUVISIO ferro is laminated to an MDF core that is CARB2, TSCA Title VI certified, then finished with perfectly matched REHAU LaserEdge™ for a luxurious, monolithic effect. From cool to warm, endless design possibilities await when you accent with RAUVISIO ferro.

Profile specifications

Appearance	Metal
Door style	Slab
Design style	Modern, contemporary
Construction	PUR laminated PET face and back, REHAU LaserEdge
Face material	UV-cured PET, multiple colors
Back material	UV-cured PET, multiple colors
Edgeband	REHAU LaserEdge, matching color
Core	Super-refined MDF
Board thickness	23/32 in (18.6 mm)

Size parameters

Minimum	3 x 5 in (76.2 x 127 mm)
Maximum	47 x 109 in (1193.8 x 2768.6 mm)

Edgebanding profile

Top edge	1.0 mm radius
Bottom edge	1.0 mm radius
Edgeband Finish	Magic 3-D LaserEdge, color matched

Accessory products

Integrated handle	1 17/64 and 5/64 in (32 and 2 mm)
-------------------	-----------------------------------

Board specifications

RAUVISIO ferro is laminated to a high quality, super-refined, engineered MDF core that is CARB2, TSCA Title VI certified which provides a stable, consistent substrate and virtually eliminates -warping.

Edgeband specifications

All components are edgebanded with REHAU LaserEdge, which provides an extremely heat and moisture resistant seamless joint rivaling solid surfaces.

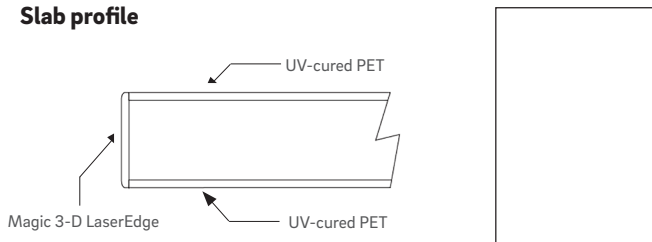
Cleaning and care

Clean with a damp microfiber cloth and mild soap if needed. While the surface is scratch resistant, it should never be dry-wiped. Avoid abrasive cleaners, solvent-based cleaners and harsh chemicals. Do not use paper towels, brushes or scouring pads. REHAU is not responsible for any damage done by abrasive cleaning products or procedures.

Protective coat

A protective peel coat is applied to the top of the PET surface. Do not expose peel coat to direct sunlight before removal. Remove promptly after installing cabinet but prior to mounting decorative hardware. To remove peel coat, use rubber fingertips or our peel coat removal tool.

Slab profile



Learn more and request a sample at na.rehau.com/ferro



Light a spark of sophistication in your space with RAUVISIO ferro.

Customer Service Contacts

Hours Monday to Friday, 8 am to 6:30 pm EST

Email orders.us@rehau.com

www.na.rehau.com/cabinetdoors

United States

Phone (888) 734-2810 Fax (616) 285-7622

Canada

Phone (888) 905-0345 Fax (514) 905-0490

For updates to publication, visit na.rehau.com/resourcecenter

The information contained herein is believed to be reliable, but no representations, guarantees or warranties of any kind are made as to its accuracy, suitability for particular applications or the results to be obtained therefrom. Before using, the user will determine suitability of the information for user's intended use and shall assume all risk and liability in connection therewith.