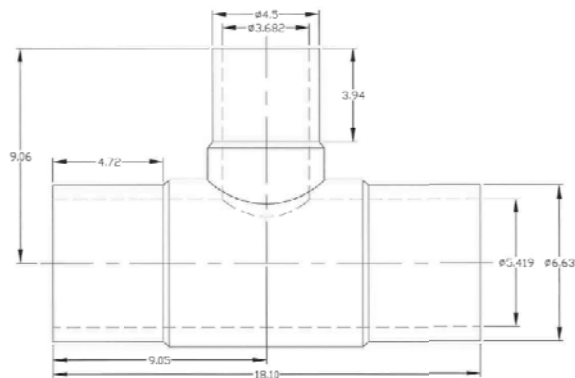


PRODUCT SUBMITTAL 387

Product: Turf Conditioning HDPE Distribution Tee DR11

Date: 31 January 2017 (supersedes 11 February 2015)



(Dimensions shown in inches)

Article No.	Description	Nominal Size	Iron Pipe Size
315661-001	Branch reducing tee	6 x 6 x 4 in.	DR11

For updates to this publication, visit na.rehau.com/resourcecenter

The information contained herein is believed to be reliable, but no representations, guarantees or warranties of any kind are made as to its accuracy, suitability for particular applications or the results to be obtained therefrom. Before using, the user will determine suitability of the information for user's intended use and shall assume all risk and liability in connection therewith.

© 2017 REHAU

FUNCTIONAL DESCRIPTION

REHAU HDPE fittings are for use in buried service distribution piping for conveying heating water in turf conditioning applications. The fitting is high density polyethylene (HDPE), IPS SDR11 in dimension, and is in accordance to ASTM D2513, D3261 and D3350. The fitting is compatible with ethylene and propylene glycol up to 50%. Pressure and temperature limits are:

- 160 psi @ 73.4°F (1055 kPa at 23°C)
- 125 psi @ 100°F (860 kPa @ 38°C)
- 100 psi @ 120°F (690 kPa @ 49°C)
- 80 psi @ 140°F (550 kPa @ 60°C)

For use with HDPE distribution pipe, manifold and fittings sold separately:

- HDPE 4 in. IPS DR11 (Art. 305656-001)
- HDPE 6 in. IPS DR11 (Art. 315664-001)
- HDPE manifold 4 in. IPS DR11 x F2080 3/4 in. (Art. 305647-002)
- HDPE 90° elbow 4 in. IPS DR11 (Art. 305654-001)
- HDPE 90° elbow 6 in. IPS DR11 (Art. 315663-001)
- HDPE flange adapter 4 in. IPS DR11 (Art. 305649-001)
- HDPE flange adapter 6 in. IPS DR11 (Art. 315662-001)
- HDPE cap 4 in. IPS DR11 (Art. 305653-001)