



CARVED STONE CREATIONS

RADIANT HEATING SYSTEM

PROJECT PROFILE

REHAU Radiant Heating System Helps Create Magical, Calming Atmosphere

As customers approach the grounds of Carved Stone Creations, factory-direct importers of custom-carved granite, marble and slate products, they are greeted by polished arches, 18 ft (5 m) granite columns topped with capitals and enormous lion head fountains above water pools. Operating under the belief that nothing is impossible, Carved Stone Creations presents a 10,500 ft² (975 m²) castle-like showroom that pleases all the senses.

Some could have perceived the flooring—a combination of slate, marble and granite—as a cold material. To solve this problem, owner Robert Ripley chose to install a REHAU radiant heating system.

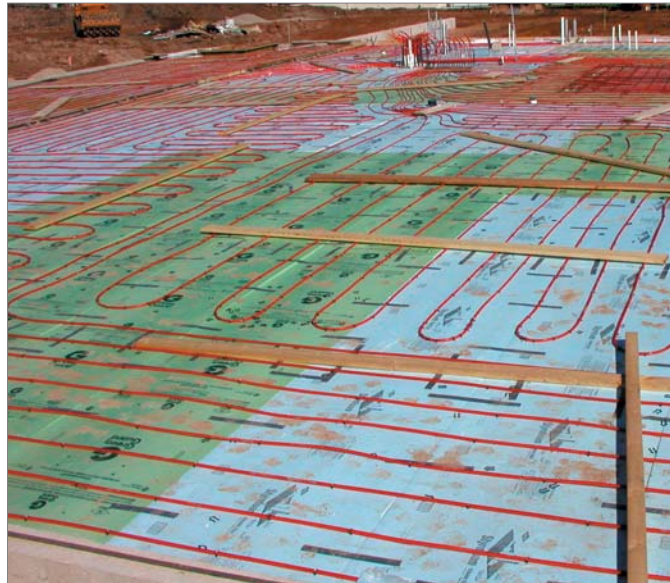
“There isn’t any better heat than radiant heat,” explained Ripley. “When customers visit on a cold Wisconsin day, which we have many of, they’ll come in across the stone floor that’s continually heated from below. Heat will gently radiate upward, lending a feeling of warmth, comfort and hominess.”

Flexibility was another key attribute for Ripley. The system is invisible, with no bulky appliances, registers or ventilation ducts to distract from the showroom’s beauty.

More than 10,000 ft of REHAU’s RAUPEX O₂ Barrier crosslinked polyethylene (PEXa) piping was laid out in several smaller loops, each primarily in a serpentine design pattern.

According to Corey Hasenjager, radiant designer for Temperature Systems Incorporated (TSI), REHAU was chosen for this job based on their long-standing reputation. “REHAU has a very high quality line of products, from their PEXa pipe to their manifolds and fittings. REHAU offers dependable technical support by a friendly, professionally-trained staff that stands behind their product and makes any job possible.”

Hasenjager utilized REHAU’s PRO-BALANCE manifolds in each of four zones—one for each of the facility’s main areas. These include the showroom, warehouse and two office areas on separate floors. Using this system, water flow can be precisely controlled to all portions of the application, regulating the amount of heat in each area.



Project: Carved Stone Creations in Kaukauna, WI

Construction: Retail showroom

Owner: Robert Ripley

Scope of Project: 10,500 ft² (975 m²)

Designer: Temperature Systems Incorporated

REHAU Systems Used: Radiant heating (RAUPEX® pipe, PRO-BALANCE® manifolds).

The separate zoning also allows Ripley flexibility for future expansion plans. He will be able to move walls and change spaces without affecting the heating design or having to move ductwork.

In addition to helping his customers relax and imagine, Ripley's choice of a radiant heating system best showcases his products—even as it lowers operating costs and delivers improved efficiency.

For updates to this publication, visit na.rehau.com/resourcecenter

The information contained herein is believed to be reliable, but no representations, guarantees or warranties of any kind are made as to its accuracy, suitability for particular applications or the results to be obtained therefrom. Before using, the user will determine suitability of the information for user's intended use and shall assume all risk and liability in connection therewith.

© 2012 REHAU