

This document is protected by copyright. All rights based on this are reserved. No part of this publication may be translated, reproduced or transmitted in any form or by any similar means, electronic or mechanical, photocopying, recording or otherwise, or stored in a data retrieval system.

REHAU Experience Centres

DELHI

REHAU Polymers Pvt. Ltd.
88, 2nd Floor, Furniture Block,
Kirti Nagar, New Delhi - 110015, India
Contact Details: 011-4848 5600

BENGALURU

REHAU Polymers Pvt. Ltd.
48, Richmond Road,
Bengaluru - 560025, India
Contact Details: +91 80 2222 0014

REHAU Sales Offices

DELHI

REHAU Polymers Pvt. Ltd.
88, 2nd Floor, Furniture Block,
Kirti Nagar, New Delhi - 110015, India
Contact Details: 011-4848 5600

BENGALURU

REHAU Polymers Pvt. Ltd.
48, Richmond Road,
Bengaluru - 560025, India
Contact Details: +91 80 2222 0014

Our verbal and written advice relating to technical applications is based on experience and is correct to the best of our knowledge, but is given without obligation.

The use of REHAU products in conditions that are beyond our control or for applications other than those specified releases us from any obligation in regard to claims made in respect of the products.

We recommend that the suitability of any REHAU product for the intended application should be checked. Utilisation and processing of our products are beyond our control and are therefore exclusively your responsibility. In the event that a liability is nevertheless considered, any compensation will be limited to the value of the goods supplied by us and used by you.

Our warranty assumes consistent quality of our products in accordance with our specifications and in accordance with our general conditions of sale.

PUNE

REHAU Polymers Pvt. Ltd.
601/602, 6th Floor, Nucleus Mall,
1 Church Road, Camp,
Pune - 411001, Maharashtra, India

MUMBAI

REHAU Polymers Pvt. Ltd.
Affairs Building, 903, 9th Floor, Plot No. 4, Sec - 17
Palm Beach Road, Sanpada, Navi Mumbai - 400705, India
Contact Details: 022-2757 4783

Email: customer.care.fs@rehau.com • Toll Free No.: 1800 2100 011

Follow REHAU India: [!\[\]\(5a351309c3b87e4420622c1f0e57efc0_img.jpg\)](#) [!\[\]\(109f62b74df51103529c262619933f25_img.jpg\)](#) [!\[\]\(4d14b1b787ec9dd7ebdfa2a60f58688e_img.jpg\)](#) [!\[\]\(6db7b173d29de84b9bc04eedb0173d7b_img.jpg\)](#)

Download REHAU India App at [Google Play Store](#)



www.rehau.co.in

25 Years
REHAU
India

Engineering progress
Enhancing lives

RAUSHELL Bravura

Weather Resilient
External Cladding for Lasting
Radiance



REHAU Global

A global leader in polymer processing technologies

When Helmut Wagner founded the company in 1948 with just 2 employees, he illuminated the way forward with the principles of competence, passion and innovation. Today, REHAU is an independent and family owned company that has over 20,000 employees across 50 countries. In every part of the world, the brand is redefining the interaction between our products and customers by engineering progress that enhances lives.

For the past 70 years, the ambition to enhance the lives of people around the world through innovative polymer-based solutions, along with the lessons from our predecessors, have been the driving force behind REHAU's success. Through our vigorous zeal and relentless efforts, we redefine what is possible in construction, automotive and industry, each day.

Today, insightful knowledge of the market and materials, complemented by tremendous experience in technology and manufacturing processes, allows us

to cater to wide-ranging needs with customised solutions. This includes improving road safety, enhancing the aesthetic appeal of homes, reducing energy consumption in buildings, etc. As a family-run business, we think and act with a view to future generations – keeping with the principle of sustainability. By remaining focused on the growing importance of quality, efficiency and sustainability, we will continue our odyssey to make lives safer, healthier and more efficient across the world.



REHAU India

India footprints

REHAU commenced operations in India in 1997, by establishing a local manufacturing unit in Pune district of Maharashtra to cater for local industry market. Since then, it has established 3 plants and employed 600+ aspirants across the nation.

A German-based company dedicated to beautify and enrich homes with innovative solutions, REHAU prioritises and delivers superior solutions from product design to applications while providing great variety in terms of choices.

With more than 1000 direct customers and up to 2500 retailers, REHAU has exceeded expectations by establishing an enormous client base in India. With 4 offices and 2 experience centres spread across the country, 6 warehouses and a huge sales network, REHAU in India has become a polymer leader by rapidly

capturing the market and managing its operations.

REHAU offers a choice of wide range of products which allows one to live with premium quality, thereby, raising the standard of living. These choices are versatile enough to accommodate new changes and that too with convenience. REHAU ensures that a positive difference is made through quality, innovation and choice.

Let's live with quality!



Engineering progress Enhancing lives

A promise of enhanced living built upon 3 pillars:

Trust

With synergism in effort, and trust in each member of the REHAU network, we make the impossible happen.

Innovation

Our strength is derived from innovative ideas that improves the ordinary for extraordinary results and performance.

Reliability

Our adherence for ethical guidelines is the foundation of our corporate conduct, because our vision is a better today and a great future, making us a reliable partner.

RAUSHELL Bravura

REHAU India has come up with yet another remarkable product in the market – RAUSHELL Bravura. These facade panels are considered to be an innovative solution for all types of construction needs. RAUSHELL Bravura is a HPL compact laminate with an intrinsic surface, manufactured using conventional PMMA based UV film or hot coating technology.

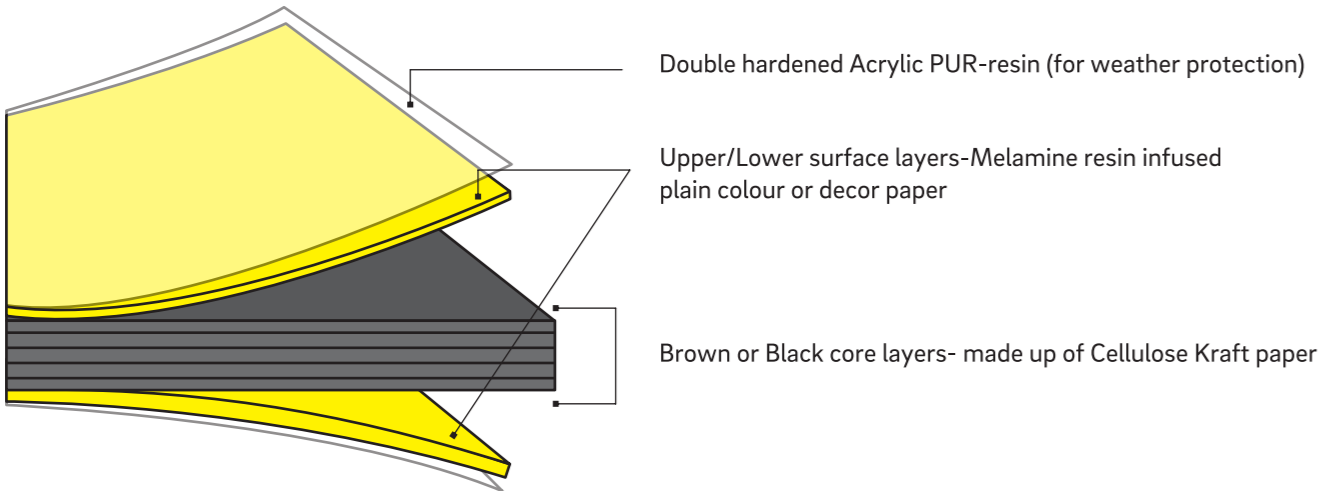
It's made with a blend of cellulose fibres and thermosetting resins, under high pressure and temperature. Available in a wide range of colours, RAUSHELL Bravura is the perfect external cladding solution that can conveniently be used in combination with other materials.

HPL Compact:

Exterior Decorative Panels are manufactured by: Impregnating large amount of Kraft papers having resin-absorbing capability

Pressing under high temperature of 180 ° C -220 ° C and pressure of 120 kg/ cm²

Both side decor





Available Colours

Woodgrains : 10 (Ready Stock)
 Stones : 8 (on Request)
 Solid : 7 (on Request)

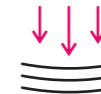
Available Size

2440mm x 1220mm x 6mm



High UV stability

A special UV protected treatment makes the claddings UV resistant and prevents discoloring under long exposure to direct sunlight



Impact resistant

It is impact resistant and has a very good modulus of elasticity due to the modified phenolic resin.



Weather resistance

Highly weather resistant even when exposed to extreme cold or heat conditions and extreme levels of humidity.



Graffiti resistant

Any writing made on the panel surface can be easily removed using recommended cleaning agent.



Good chemical resistance

Designed for environments highly prone to chemicals (Limited) and harsh solutions



Easy to clean & low maintenance

It is easy to clean and maintain.



Fire retardant

Claddings are resistant to high temperatures and flame conditions. Bravura is available with flame retardant grade.



Scratch resistance

It is highly scratch resistant and has a very good modulus of elasticity due to the modified phenolic resin.



Wear & abrasion resistance

REHAU Bravura has superior abrasion and wear resistance capabilities which gives it better lifespan.



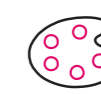
Termite resistance

RAUSHELL Bravura is highly resistant to termite and fungal attack.



Non corrosive panel

Absolutely non-corrosive unlike other metallic cladding products.



Wide range of colours

Various color shade

Application Scope



- 1 Ceilings
- 2 Ventilated Facades
- 3 Balcony Claddings
- 4 Pillars
- 5 Doors
- 6 Highlighter

Application areas:



Commercial



Hotel and Resort



Residence



Shopping Mall



Retails Shop



Corporate Office



RESIDENCE



SHOPPING MALL



COMMERCIAL

APPLICATION AREAS

WOODGRAIN



UV RAYS RESISTANCE

Cosco 0101C



Elm 0102C



Maldau 0103C



Vintage 0104C



Alaska 0105C



Actual colour may vary from photo shown

Jamaican 0106C



Hampshire 0107C



Tropical 0108C



Classic 0109C



Mariano 0110C



Actual colour may vary from photo shown

IMPACT RESISTANCE |



STONE



Matterhorn 2001C



Denali 2003C



Aoraki 2005C



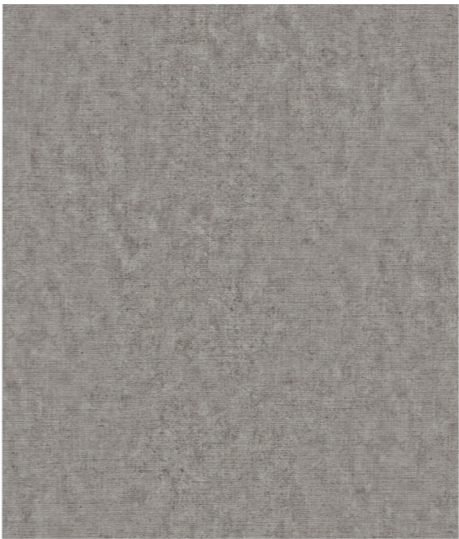
Huangshan 2007C



Olive 2002C



Vinicunca 2004C



Kilimanjaro 2006C



Castle 2008C



Actual colour may vary from photo shown

SOLID



EASY TO CLEAN & LOW MAINTENANCE

***Malarstall 3001C**



Aquamarine 3002C



***Parrburn 3003C**



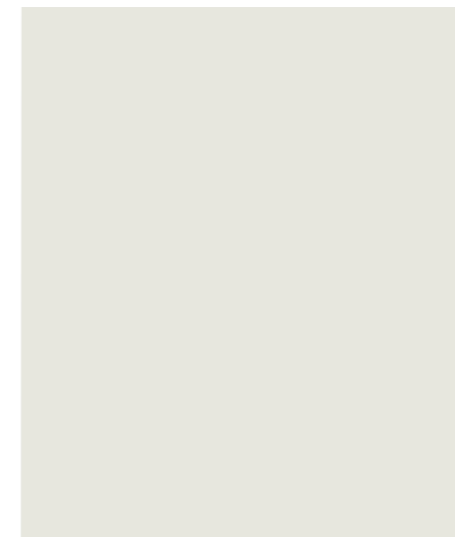
Cochbalt 4001C



Serpent 3004C



Whitemis 3005C



***Tadpole 3006C**



*Warranty not applicable on solid colour shades for colour fastening.

Actual colour may vary from photo shown

Technical Specification

| SL.# | PROPERTIES | TEST METHOD | ATTRIBUTE OF PERFORMANCE | UNIT | RESULTS (AS PER EN 438-6) |
|---------------------------------|--|-----------------|--|-------------------|---------------------------|
| 1 | Surface Quality | EN 438-2.4 | Spots, Dirt and Similar surface defects | mm²/m² | ≤ 2 |
| | | | Fibres, hairs and scratches | mm/m² | ≤ 20 |
| 2 | Thickness | EN 438-2.5 | Thickness tolerance | mm | 5 ≤ T < 8 : ± 0,4 |
| 3 | Size | EN 438-2.6 | Length and width | mm | + 10 / - 0 |
| 4 | Straightness of edges | EN 438-2.7 | Straightness of edges | mm/m | ≤ 1,5 |
| 5 | Squareness | EN 438-2.8 | Squareness | mm/m | ≤ 1,5 |
| 6 | Flatness | EN 438-2.9 | Flatness (measured on full-size sheet) | mm/m | 6,0 ≤ T < 10,0 : 5 |
| 7 | Flexural modulus | EN ISO 178 | Stress | Mpa | ≥ 9000 |
| 8 | Flexural strength | EN ISO 178 | Stress | Mpa | ≥ 80 |
| 9 | Density | EN ISO 1183 | Density | gm/cm³ | ≥ 1,35 |
| 10 | Resistance to impact with large diameter ball | EN 438-2.21 | Indent. dia. 10mm T≥6mm - Drop Height | mm | ≥ 1800 |
| 11 | Resistance to wet conditions | EN 438-2.15 | Mass increase - T ≥ 5 mm | Rating | EGS/EDS- ≤ 5,EGF/EDF- ≤ 8 |
| 12 | | | Appearance | Rating | ≥ 4 |
| 13 | Dimensional stability at elevated temperatures | EN 438-2.17 | Cumulative dimensional change - T ≥5mm | L% | ≤ 0,30 |
| | | | | T% | ≤ 0,60 |
| WEATHER RESISTANCE REQUIREMENTS | | | | | |
| 14 | Resistance to climatic shock | EN 438-2.19 | Thermal Shock Resistance -Appearance | Rating | ≥ 4 |
| 15 | Resistance to artificial weathering | EN 438-2.29 | Contrast | Grey scale rating | ≥ 3 |
| 16 | | | Appearance | Rating | ≥ 4 |
| FIRE PERFORMANCES | | | Test as per EN 13823 (SBI test) and EN ISO 11925-2 (Small-burner test) | | |
| 17 | Fire Reaction Classification, EGF-EDF | EN 135 01 | Classification - T ≥ 6 mm | Rating | B - s1, d0 |
| OTHER PROPERITES | | | | | |
| 19 | Release of Formaldehyde | EN 438-7.4.11.1 | Classification | Rating | E1 |

Product Warranty:

RAUSHELL Bravura warrants that, under normal use and service, the product shall confirm to the standards EN 438-6 set forth on the data sheet for a period of 10 years against colour fastness and mechanical strength beginning from related invoice date, as per the technical datasheet.

- Warranty will be valid when installation will be done according to REHAU’s installation Guideline under technical supervision.

Product Warranty: REHAU warrants that under normal use of RAUSHELL Bravura panels, it will conform to the properties as per specification of EN 438-Part-6, for the period of 10 years from the date of invoice of REHAU to the first consumer purchaser, subject to following conditions:

Slight deviations or homogeneous variations in colour taking place in course of time of use is acceptable as per En438 Part6

The warranty will be non-tranferable and any resale of the product after installation by the first consumer purchaser shall render the warranty void.

The product warranty don't cover any damage or deviation caused by - a. Accidents, b. Misuse/mishandles, c. improper installation & Maintenance/ Cleaning and REHAU have the absolute right to examine the root cause for such damage.

In case of any dispute or differences which arise our of these warranty terms, the same will be subject to the jurisdiction of the courts of law in Pune, India.

In the event that the product does not perform as warranted, acceptance pf the product whether, it is defective or not, repair or replace of all or any part, is at REHAU sole discretion.

REHAU will not be responsible for any additional construction material and

Labour costs associated with the replacement, Installation or repair and will be limited to the cost of the product only.

Customer is required to submit the original Invoice of REHAU and invoice of dealer to the client related to the project work along with the photographs of completed site, then only this warranty will be considerable. Failing to do so this documents holds of no reference.

Quality Credential & Test Certificate: RAUSHELL Bravura undergo rigorous testing to make sure the product meet national & international quality standards. REHAU's Product management team and designers work efficiently to give our customer the freedom to design the exterior wall in immense way.



RAUSHELL
Bravura -
10 Years
warranty