



**Engineering progress  
Enhancing lives**

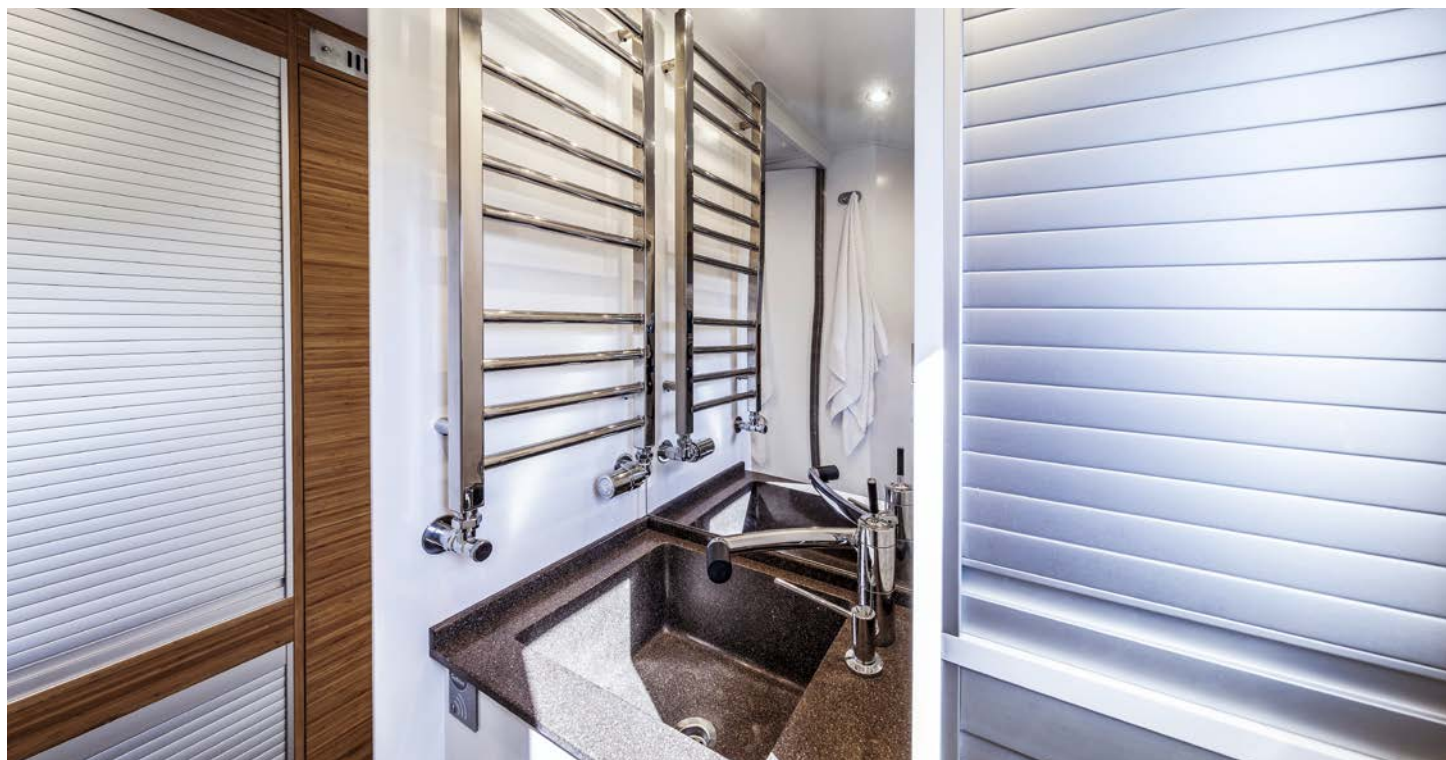
## **REHAU Reference**

Interior design for expedition trucks,  
Krug Expedition, Austria





# Furniture for globetrotters: Chic, lightweight and extremely robust



The Krug company is based on the enthusiasm of a German-Austrian cooperation, their goal is to build technically superior and extremely reliable expedition vehicles, that fare well on both price and performance. This is achieved by a network of specialised craftsmen from Western and Eastern Europe.

It is not only the vehicle's technology that passes the hardest and most adventurous excursions. The interior must also follow a criteria of being light, robust, practical and above all chic.

This is where the adventure for REHAU begins. After all, the polymer surface materials are flexible, light and can be processed with conventional carpentry tools. This makes the polymer glass laminate from REHAU the ideal replacement for a heavy and fragile glass mirror. The wall cupboards do not need doors with disturbing folding mechanisms, and stow everything expedition-proof behind cupboard tambour door systems with robust mechanics and attractive appearance.

The reward for each of these unique trucks are the stories and adventures, told by the customers. Their tracks lead from the Atacama desert to Siberia, and REHAU is part of it.

## **Customer**

Krug Expedition, Austria

## **Year**

2020

## **Reference**

Interior design for expedition trucks,  
Austria

## **REHAU products**

Mirror surfaces from RAUVISIO crystal  
mirror and Tambour door systems  
RAUVOLET metallic-line