



Engineering progress  
Enhancing lives

**RAUSHELL**  
**Bravura®**

Weather-proof  
External Cladding

**Protect  
the protector**



**REHAU Global**





## A global leader in polymer processing technologies

When Helmut Wagner founded REHAU in 1948 with just 2 employees, he illuminated the way forward with the principles of competence, passion, and innovation. Today, REHAU is an independent, family-owned company that has over 20,000 employees across 50 countries.

In every part of the world, the brand is redefining the interaction between our products and customers by engineering progress that enhances lives.

For the past 70 years, the ambition to enhance the lives of people around the world through innovative polymer-based solutions, along with the lessons from our predecessors, has been the driving force behind REHAU's success. Through our vigorous zeal and relentless efforts, we redefine what is possible in construction, automotive and industry, every day.

Our insightful knowledge of the market and materials, complemented by tremendous experience in technology and manufacturing processes, allows us to cater to wide-ranging needs with customised solutions. This includes improving road safety, enhancing the aesthetic appeal of homes, reducing energy consumption in buildings, and more. As a family-run business, we think and act with a view to future generations – keeping with the principles of sustainability. By remaining focused on the growing importance of quality, efficiency, and sustainability, we will continue our odyssey to make lives safer, healthier, and more efficient across the world.

# REHAU India





## India footprints

REHAU commenced operations in India in 1997, with the establishment of a local manufacturing unit in the Pune district of Maharashtra to cater to the local industrial market. Since then, it has established 3 plants and employed 600+ aspirants across the country.

The Germany-headquartered company is dedicated to beautifying and enriching homes with innovative solutions. REHAU prioritises and delivers superior solutions - from product design to applications - while providing superior variety in terms of choice.

With more than 1000 direct customers and nearly 2500 retailers, REHAU has exceeded expectations by establishing an enormous client base in India. With 4 offices and 3 experience centres, 6 warehouses and a huge sales network spread across the country, REHAU in India has become a polymer leader by rapidly capturing the market and managing its operations. It offers a wide range of products that enable customers to experience premium quality and raise their standards.

These product choices are versatile enough to accommodate new changes and that too with convenience. REHAU ensures that a positive difference is made through quality, innovation, and choice.

REHAU is equally concerned with ecological and resource protection. In kitchens, our goal is to improve the finish and aesthetics of modular kitchens. We endeavour to provide high-quality, sustainable products.

Let's live with quality!



## Engineering progress Enhancing lives

**Our promise of enhanced living is built on 3 pillars:**

### **Trust**

With synergy in effort, and trust in each member of the REHAU network, we make the impossible happen.

### **Innovation**

Our strength is derived from innovative ideas that ameliorate the ordinary for extraordinary results and performance.

### **Reliability**

Our adherence to ethical guidelines is the foundation of our corporate conduct. Our vision is for a better today and a greater future ahead, making us a reliable partner for your needs.

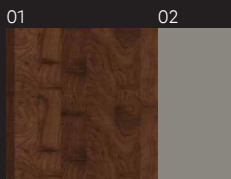




## RAUSHELL Bravura®

The four walls around you withstand every challenge to protect you against external adversities. Every home, every building, and every piece of architecture symbolises safety. To ensure the security of your safekeeper, REHAU has introduced a one of a kind product, RAUSHELL Bravura® Exterior Wall Cladding.

RAUSHELL Bravura® enhances the aesthetic look and increases the durability of the building's exterior. The high-quality exterior facade panel provides a lightweight and strong solution against every external challenge, natural or human. RAUSHELL Bravura® helps you modernize your building's exterior with imaginative styling and brilliant designs. With a variety of colours to offer, you get an amazing range of the best building exterior that can fit seamlessly with other materials.



01 CLASSIC 0109C  
02 COCHBALT 4001C





**A5**  
**148mm x 210mm**

## Protect your protector

RAUSHELL Bravura® provides durability and long term protection to your protector against factors like heavy rain, dampness, chemical contaminants in the air, severe temperatures, and exposure to extreme sunlight, without compromising on the beauty and designs.



UV Rays  
Resistant



Impact Resistant



Fire Retardant



Easy To Clean &  
Low Maintenance



Chemical Resistant



Scratch Resistant



Wear & Abrasion  
Resistance



Weather Resistant



Termite Resistant



Wide Range  
of Colors



Graffiti Resistant



Non Corrosive Panel

01



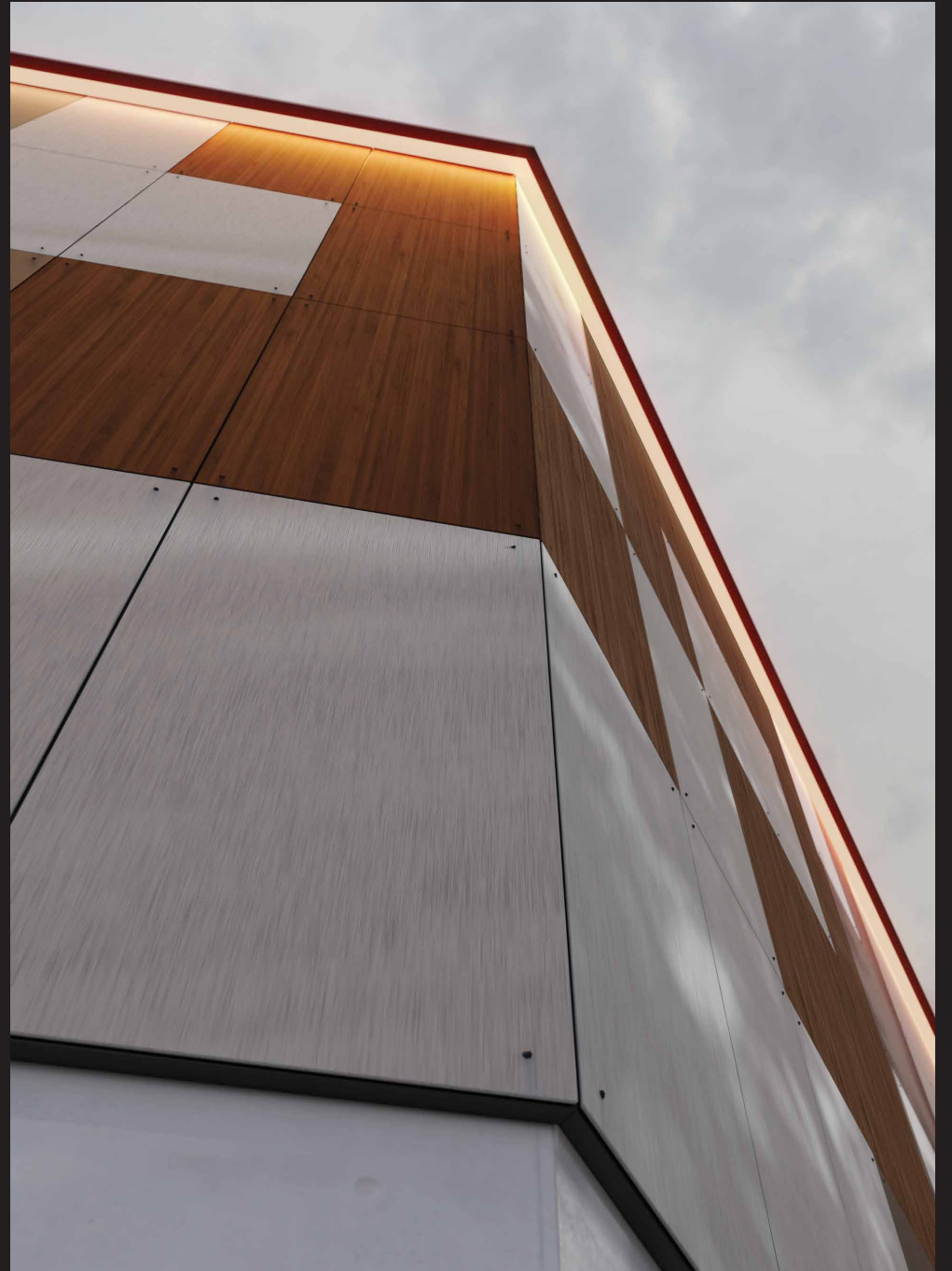
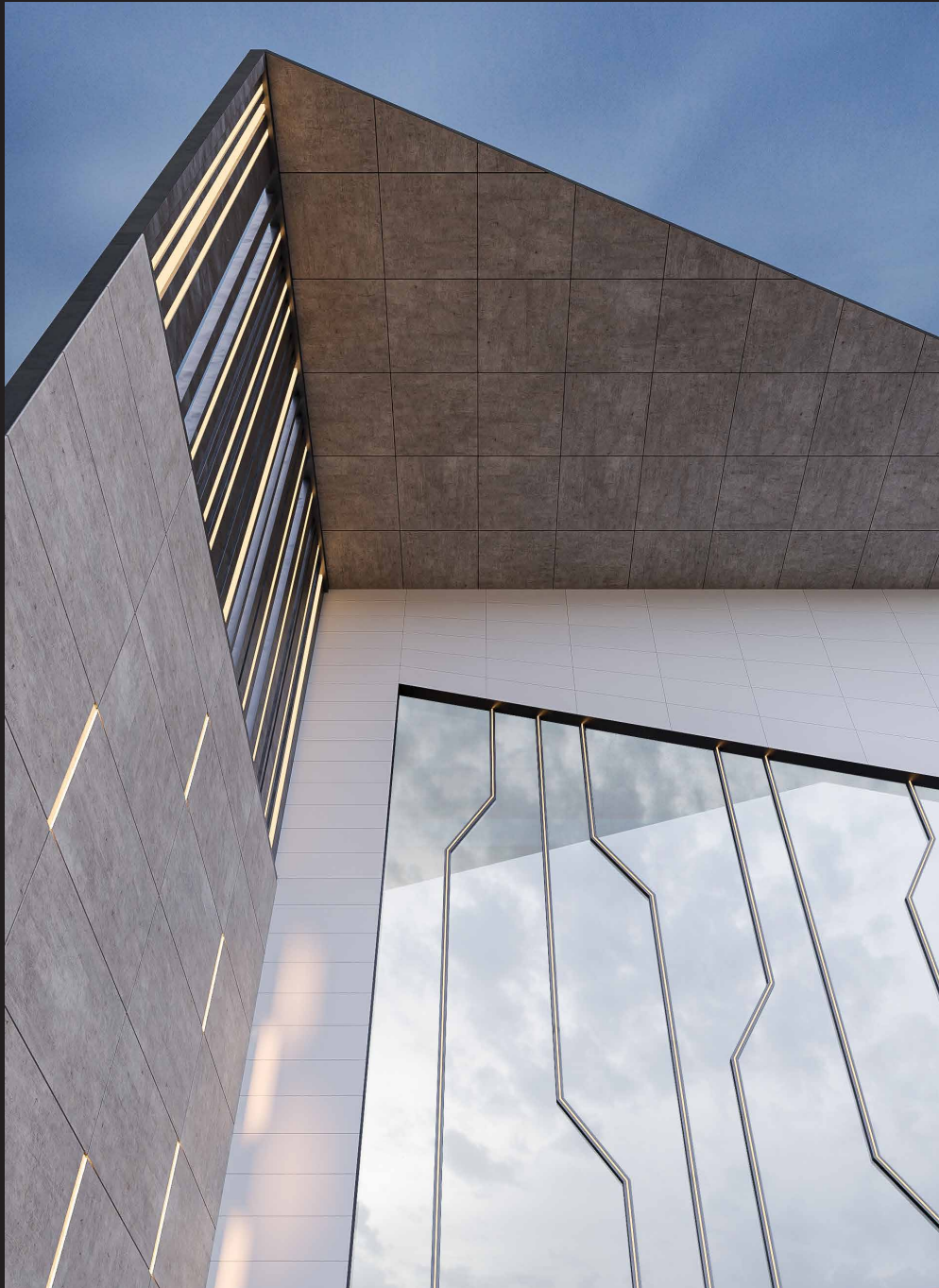
02



01 \*MALARSTALL 3001C  
02 AQUAMARINE 3002C

**RAUSHELL**  
**Bravura®**  
**10 Years**  
**warranty**





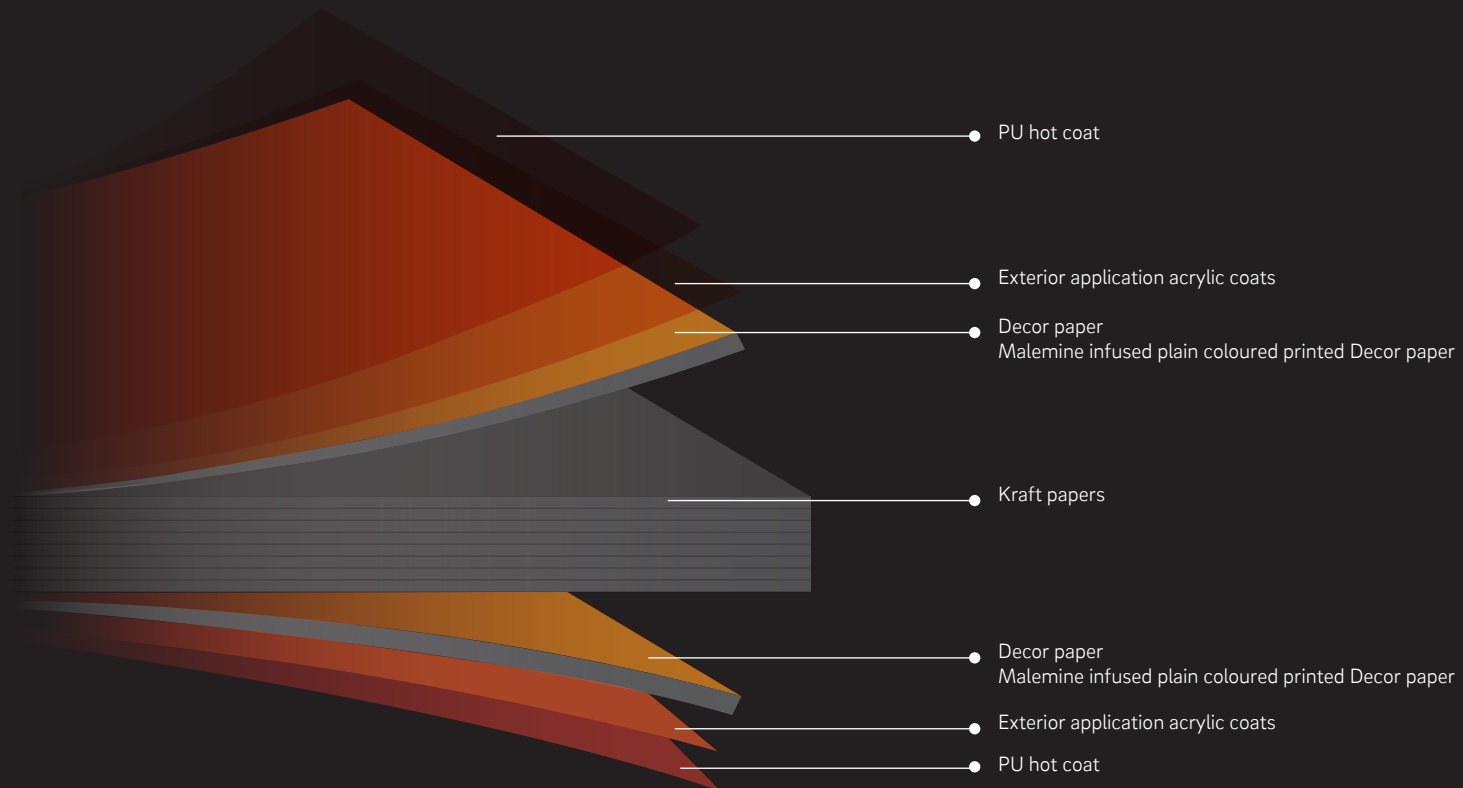
# German technology for architectural Inspiration

RAUSHELL Bravura® is a HPL compact laminate with an intrinsic surface, manufactured using conventional PMMA based UV or hot coating technology.

It's made with a blend of cellulose fibers and thermosetting resins, under high pressure and temperature. Available in a wide range of colours, RAUSHELL Bravura® is the perfect external cladding solution that can conveniently be used in combination with other materials.

## HPL Compact:

- Exterior Decorative Panels are manufactured by: Impregnating large amount of kraft papers having resin-absorbing capability.
- Pressing under high temperature of 180° C-220° C and pressure of 120kg/cm<sup>2</sup>





Heat Resistant



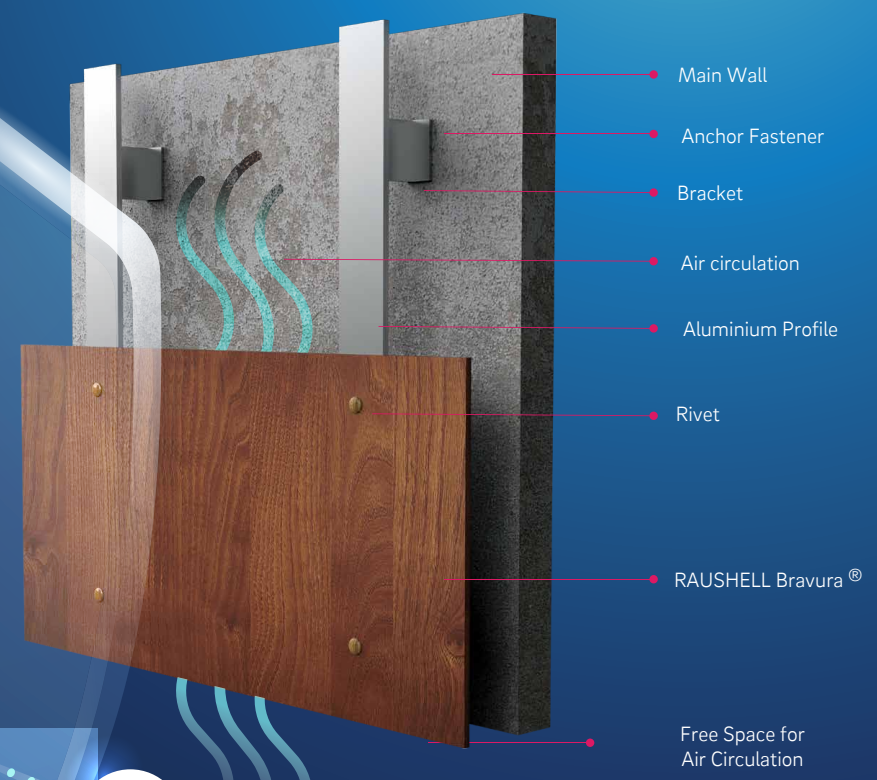
Rain Resistant



Cold Resistant



Non Reactive to Pollution



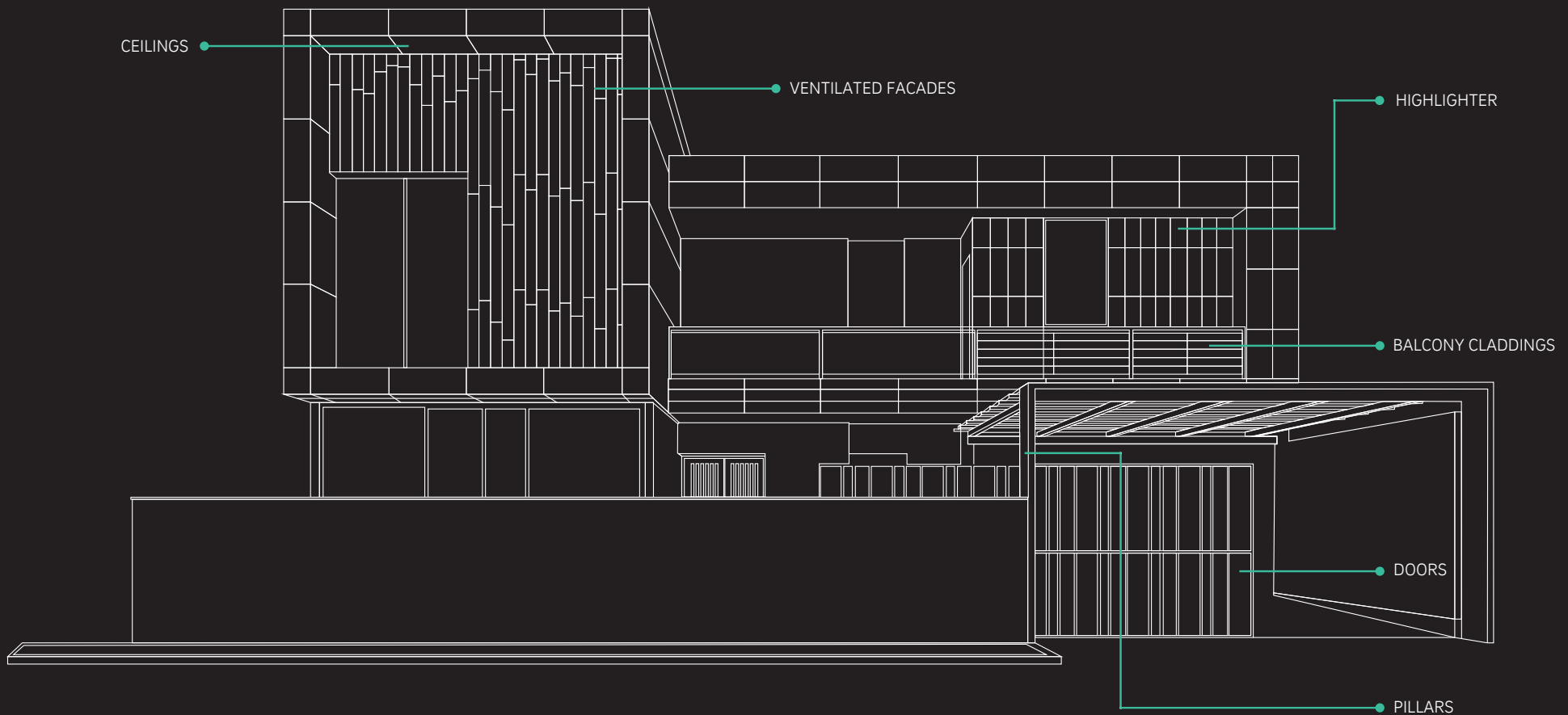
## **RAUSHELL Bravura® Protection System**

RAUSHELL Bravura® Exterior Wall Cladding has been carefully designed to be resistant to specific environmental factors that the buildings are exposed to. With a combination of water-resistant materials to repel water and reflective coatings to minimize heat absorption, RAUSHELL Bravura® protects your protector against rain and sunlight. The cladding is put in place using techniques that create a barrier between the exterior walls and the environment. This includes installing an air gap between the cladding and the walls to allow for proper ventilation that maintains a favorable temperature inside while also preventing moisture buildup.









## Application Scope

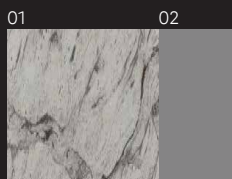
RAUSHELL Bravura® wall cladding can be used on a variety of external surface and adds a fresh layer of protection to variety of sites. Let's have a look at the possibilities of using Bravura cladding for different sites of your building:



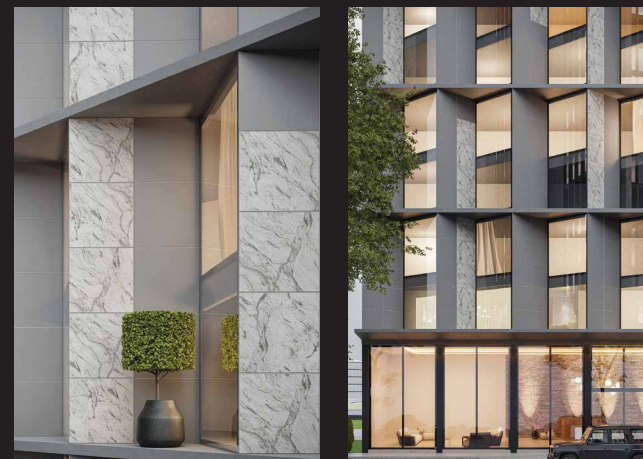


## Hotels

Don't keep your hotels just a place to spend a night, rather than uplift the experience of your customers by providing a place beyond just the roof, but a home away from home.



01 KILIMANJARO 2006C  
02 AQUAMARINE 3002C









## Commercial

Be it a small one like a retail shop, or a big shopping complex or mall, everyone requires a kind of outdoor look that attracts business opportunities and customers. Define your innovative spaces with an innovative mixture of surfaces.

01

02



01 \*MALARSTALL 3001C  
02 AQUAMARINE 3002C



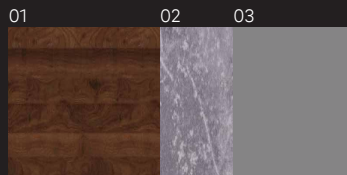






## Residential

The essence of a home is found in the characteristics of the people who reside in it. Give that space a vibrant look with different textures that define your nature.



- 01 CLASSIC 0109C
- 02 DENALI 2003C
- 03 AQUAMARINE 3002C



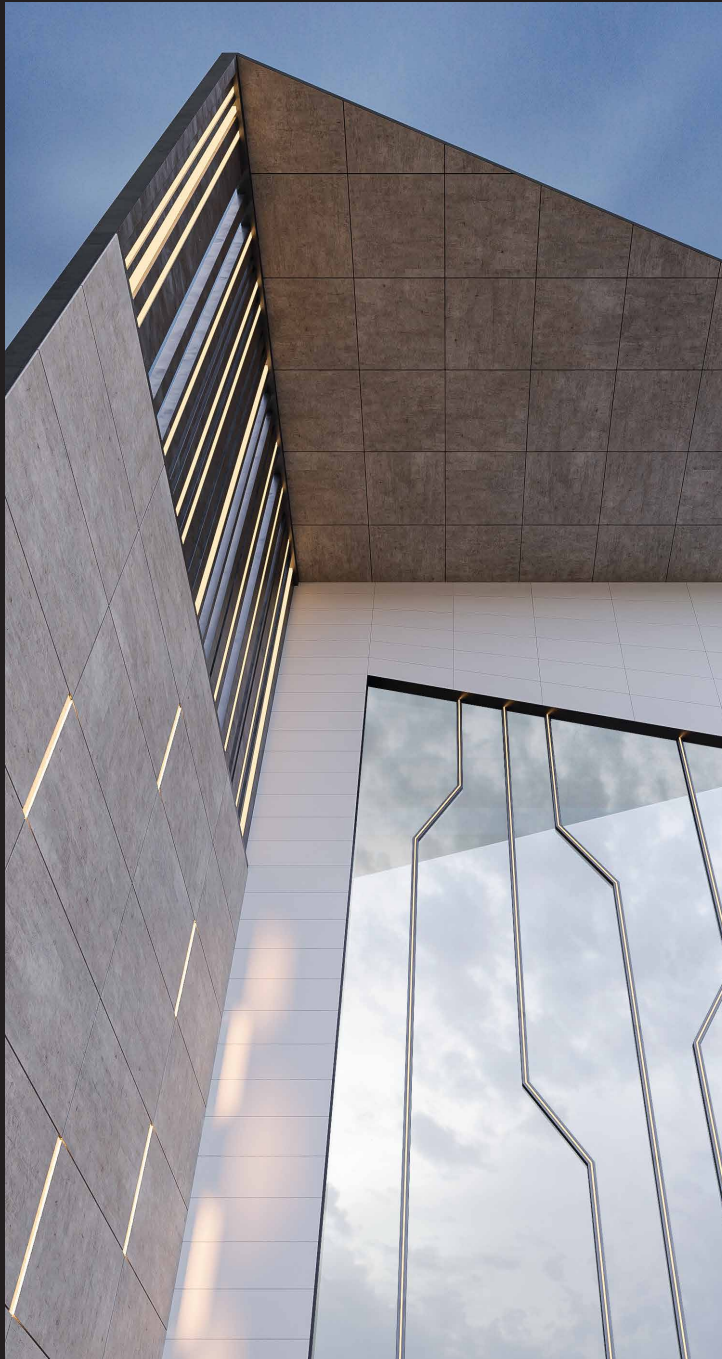
HOSPITAL  
BY REHAU



EMERGENCY

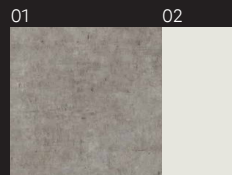
AMBULANCE





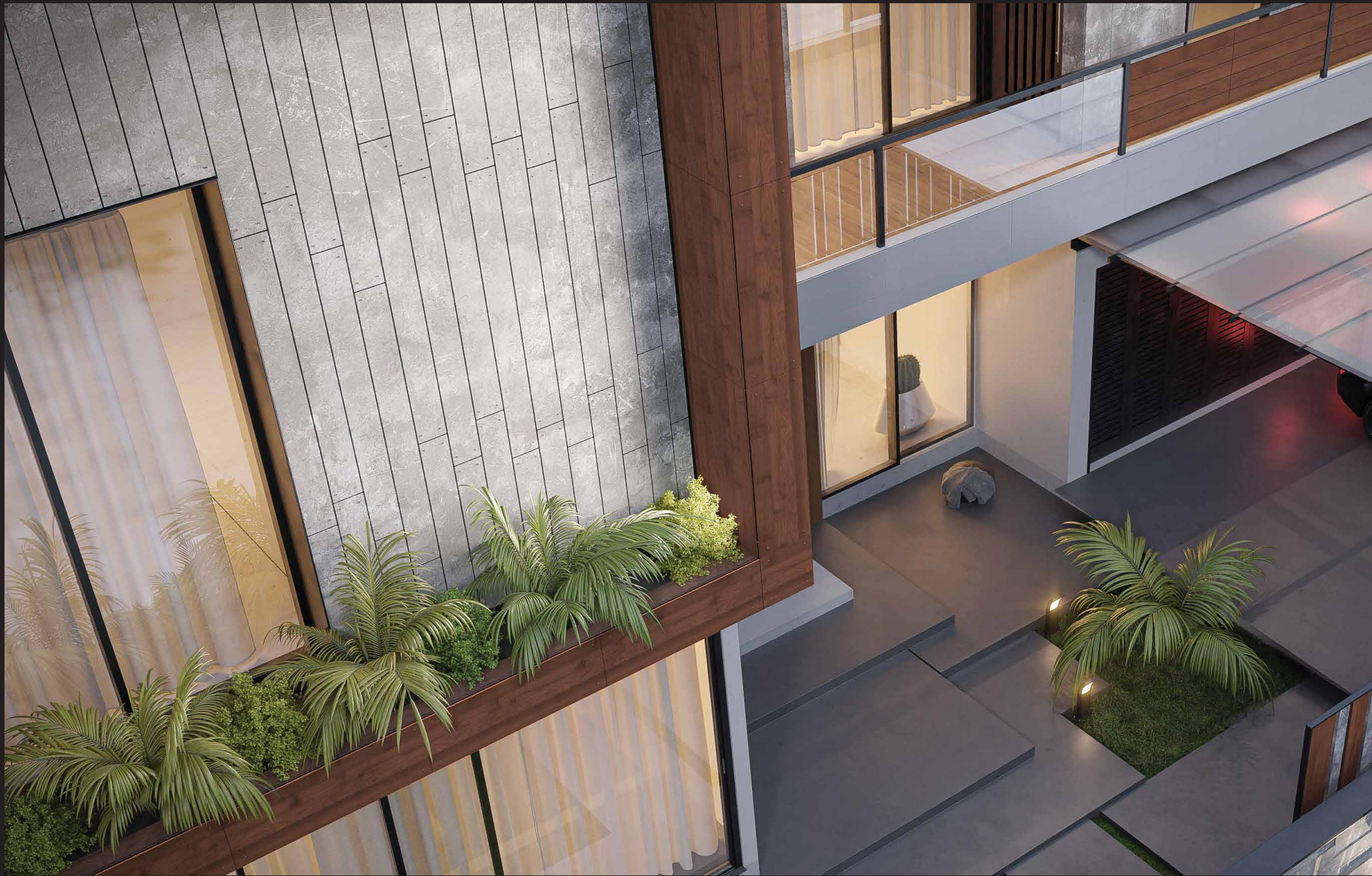
## Hospitals & Healthcare

A place dedicated to restoring health and hope requires a kind of outlook that gives a person a sense of relief.

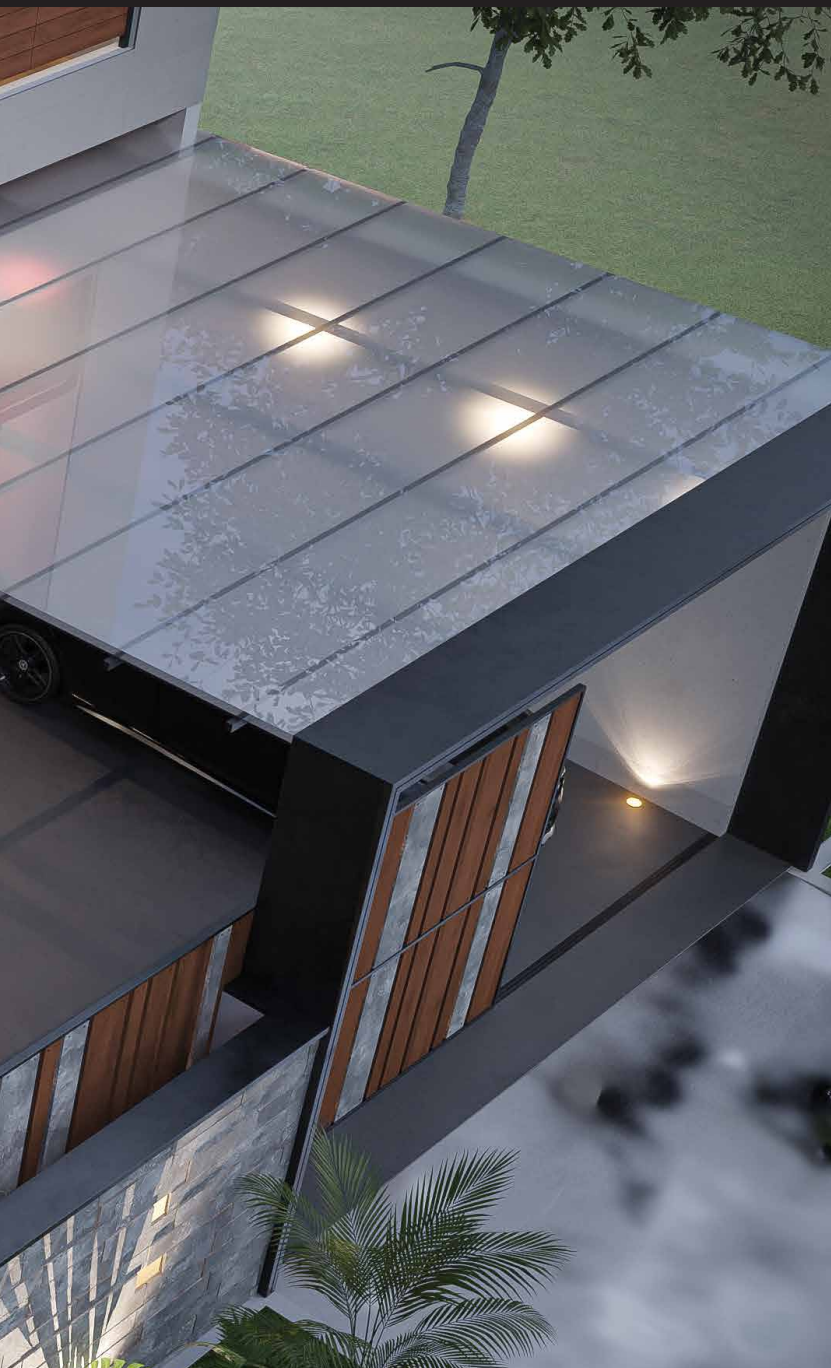


01 AORAKI 2005C  
02 WHITEMIS 3005C









**Handpick the Finest**

## **RAUSHELL Bravuara® Design Collection**

RAUSHELL Bravuara® provide long-term protection to your protector's exteriors against all environmental factors that may affect the health of your outer walls. It improves the property's structural strength and resilience to abrasion, fractures, and scratches through a wide range of stunning designs under three ranges.

### **Available Colours**

Woodgrains | Stones | Solid

### **Standard Size**

2440mmx1220mmx6mm

Other variants available as per application





# WOODGRAIN

Achieve timeless elegance through the beauty of nature through our exquisite collection of woodgrain patterns.





HAMPSHIRE 0107C



JAMAICAN 0106C



VINTAGE 0104C



VINTAGE 0104C



ELM 0102C



ALASKA 0105C



MALDAU 0103C



TROPICAL 0108C




CLASSIC 0109C



COSCO 0101C



The background of the entire image is a dark, almost black, stone surface with a highly textured and layered appearance. The stone has a rough, weathered look with visible cracks, crevices, and variations in tone, ranging from deep black to a dark charcoal grey. The lighting is dramatic, highlighting the uneven surface and creating a sense of depth and ruggedness.

# STONE

Rock the look of  
your exteriors  
with our vigorous  
collection of  
natural stone  
surfaces.





OLIVE 2002C



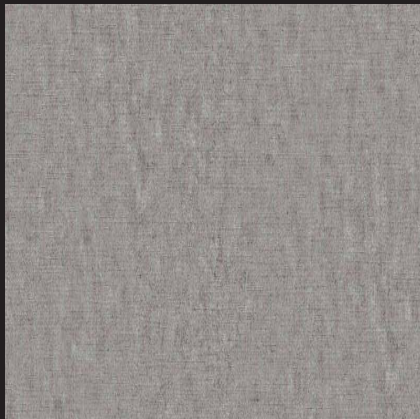
CASTLE 2008C



MATTERHORN 2001C



KILIMANJARO 2006C



VINICUNCA 2004C



AORAKI 2005C



DENALI 2003C

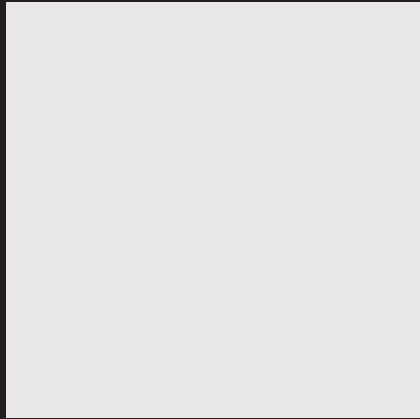


HUANGSHAN 2007C

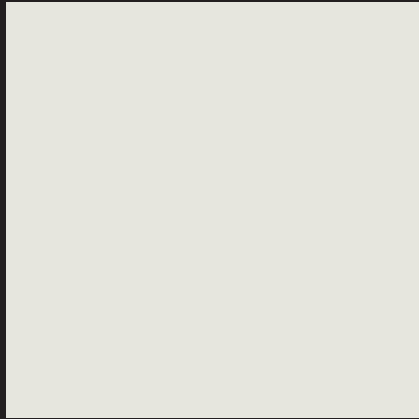


# SOLID

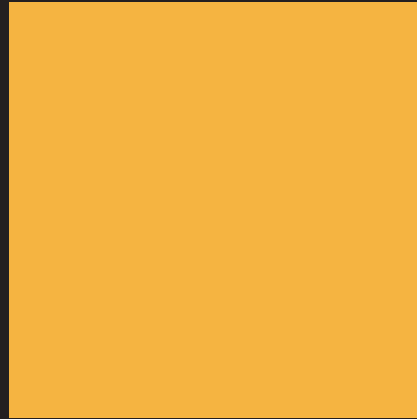
Protect your exteriors with our  
righteous collection with solid  
surfaces.



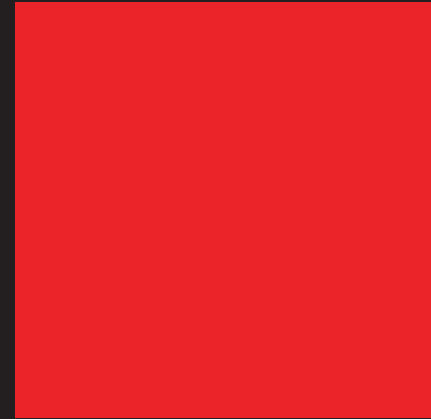
SERPENT 3004C



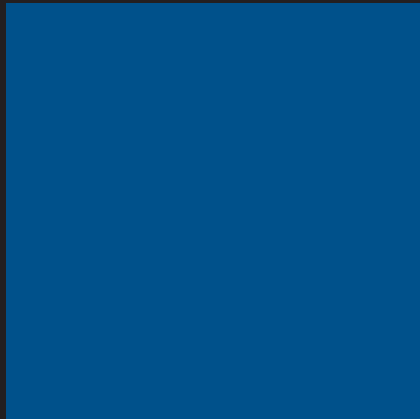
WHITEMIS 3005C



\*TADPOLE 3006C



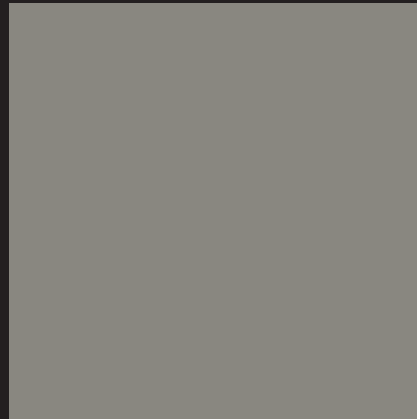
\*MALARSTALL 3001C



\*PARRBURN 3003C



AQUAMARINE 3002C



COCHBALT 4001C



## Backed by Quality Excellence

RAUSHELL Bravura® undergo rigorous testing to make sure the product meet national & international quality standards. REHAU's Product management team and designers work efficiently to give our customer the freedom to design the exterior wall in immense way.



**RAUSHELL  
Bravura®  
10 Years  
warranty**

# Technical Specification

SL.#	PROPERTIES	TEST METHOD	ATTRIBUTE OF PERFORMANCE	UNIT	RESULTS (AS PER EN 438-6)
1	Surface Quality	EN 438-2.4	Spots, Dirt and Similar surface defects	mm <sup>2</sup> /m <sup>2</sup>	≤ 2
			Fibres, hairs and scratches	mm/m <sup>2</sup>	≤ 20
2	Thickness	EN 438-2.5	Thickness tolerance	mm	5 ≤ T < 8 : ± 0,4
3	Size	EN 438-2.6	Length and width	mm	+ 10 / - 0
4	Straightness of edges	EN 438-2.7	Straightness of edges	mm/m	≤ 1,5
5	Squareness	EN 438-2.8	Squareness	mm/m	≤ 1,5
6	Flatness	EN ISO 178	Flatness (measured on full-size sheet)	mm/m	6,0 ≤ T < 10,0 : 5
7	Flexural modulus	EN 438-2.9	Stress	Mpa	≥ 9000
8	Flexural strength	EN ISO 178	Stress	Mpa	≥ 80
9	Density	EN ISO 1183	Density	gm/cm <sup>3</sup>	≥ 1,35
10	Resistance to impact with large diameter ball	EN 438-2.21	Indent. dia. 10mm T≥6mm - Drop Height	mm	≥ 1800
11	Resistance to wet conditions	EN 438-2.15	Mass increase - T ≥ 5 mm	Rating	EGS/EDS- ≤ 5,EGF/EDF- ≤ 8
12			Appearance	Rating	≥ 4
13	Dimensional stability at elevated temperatures	EN 438-2.17	Cumulative dimensional change - T ≥5mm	L%	≤ 0,30
				T%	≤ 0,60
<b>WEATHER RESISTANCE REQUIREMENTS</b>					
14	Resistance to climatic shock	EN 438-2.19	Thermal Shock Resistance-Appearance	Rating	≥ 4
15	Resistance to artificial weathering	EN 438-2.29	Contrast	Grey scale rating	≥ 3
16			Appearance	Rating	≥ 4
<b>FIRE PERFORMANCES</b>			<b>Test as per EN 13823 (SBI test) and EN ISO 11925-2 (Small-burner test)</b>		
17	Fire Reaction Classification, EGF-EDF	EN 135 01	Classification - T ≥ 6 mm	Rating	B - s1, d0
<b>OTHER PROPERITES</b>					
18	Release of Formaldehyde	EN 438-7.4.11.1	Classification	Rating	E1





## Sustainability at its core

Sustainability has become an increasingly important consideration in the design and construction of buildings, and wall cladding is no exception. One of the ecological key aspects of wall cladding is the use of materials that are energy-efficient and have a low environmental impact.

This can include using materials that are made from renewable resources. The material of wall cladding should also be durable and able to withstand to last for a long time, reducing the need for frequent repairs or replacements. In this way, not only energy and resources are conserved, but also the overall lifecycle cost of the building is reduced.

Overall, wall cladding is an essential component in the construction of buildings that are designed to be energy-efficient, environmentally friendly, and healthy for occupants. By incorporating sustainable materials and systems into wall cladding design, building owners and developers can help to reduce their environmental impact, lower operating costs, and create a more comfortable and pleasant indoor environment.







This document is protected by copyright. All rights based on this are reserved. No part of this publication may be translated, reproduced or transmitted in any form or by any similar means, electronic or mechanical, photocopying, recording or otherwise, or stored in a data retrieval system. Our verbal and written advice relating to technical applications is based on experience and is correct to the best of our knowledge, but is given without obligation.

The use of REHAU products in conditions that are beyond our control or for applications other than those specified releases us from any obligation in regard to claims made in respect of the products.

We recommend that the suitability of any REHAU product for the intended application should be checked. Utilisation and processing of our products are beyond our control and are therefore exclusively your responsibility. In the event that a liability is nevertheless considered, any compensation will be limited to the value of the goods supplied by us and used by you.

Our warranty assumes consistent quality of our products in accordance with our specifications and in accordance with our general conditions of sale.

## REHAU EXPERIENCE CENTRES

### DELHI NCR

**REHAU Polymers Pvt. Ltd.**  
B-7, Amaltash Marg,  
Opp. Telephone Exchange, Block B,  
Sector 4, Noida, Uttar Pradesh 201301, India  
Contact Details: +91 99 6835 1346

### MUMBAI

**REHAU Polymers Pvt. Ltd.**  
Rehau (Main Road) Raghuvanshi Mills,  
Senapati Bapat Marg, Gandhi Nagar,  
Upper Worli, Lower Parel, Mumbai,  
Maharashtra 400013, India  
Contact Details: +91 93 2495 2718

### BENGALURU

**REHAU Polymers Pvt. Ltd.**  
48, Richmond Road,  
Bengaluru - 560025, India  
Contact Details: +91 80 2222 0014

## REHAU SALES OFFICES

### DELHI NCR

**REHAU Polymers Pvt. Ltd.**  
B-7, Amaltash Marg,  
Opp. Telephone Exchange, Block B,  
Sector 4, Noida, Uttar Pradesh 201301, India  
Contact Details: +91 99 6835 1346

### PUNE

**REHAU Polymers Pvt. Ltd.**  
601/602, 6th Floor, Nucleus Mall,  
1 Church Road, Camp,  
Pune - 411001, Maharashtra, India

### BENGALURU

**REHAU Polymers Pvt. Ltd.**  
48, Richmond Road,  
Bengaluru - 560025, India  
Contact Details: +91 80 2222 0014

### MUMBAI

**REHAU Polymers Pvt. Ltd.**  
Rehau (Main Road) Raghuvanshi Mills,  
Senapati Bapat Marg, Gandhi Nagar,  
Upper Worli, Lower Parel, Mumbai,  
Maharashtra 400013, India  
Contact Details: +91 93 2495 2718

customer.care.fs@rehau.com

1800 2100 011

Follow REHAU India:     Download **REHAU India App** at  



www.rehau.co.in