



**Engineering progress
Enhancing lives**

Solutions for sustainable construction

Let's build the world a little better.
www.rehau.uk/building-solutions



Engineering Progress. Enhancing Lives.

At REHAU we engineer progress and are dedicated to enhancing the lives of our customers throughout the UK.

We develop innovative products which are reliable, high quality and provide long term solutions for our customers so they can build for the future. Next level building from REHAU.



REHAU Group

Shaping a sustainable future

REHAU has 75 years of experience and over 20,000 staff worldwide, providing specialist polymer solutions for the construction, automotive and furniture sectors. As a family business, REHAU has always thought sustainably and takes responsibility for future generations.



Sustainability in action

50 SUSTAINABILITY & CLIMATE LEADERS

A RACE WE CAN WIN 

Due to our efforts to promote the circular economy, REHAU was selected as one of the '50 Sustainability & Climate Leaders'.



In 2023, REHAU received the top grade B in the global sustainability rating CDP for the third time in a row, thus exceeding both the global average and the average for the polymer product manufacturing sector (grade C).



In 2024, REHAU received gold certification from the rating agency EcoVadis for the third time in a row with an overall score of 75 out of 100. This puts us in the top 5 per cent of all participating companies and in the top 1 per cent in the polymer industry.



We are reliable
Sustainability relies on product quality and durability. That's why we use our expertise to align this quality with climate protection targets and support our customers in achieving their sustainability goals.



We are innovative
With our passion for new ideas, we drive progress to transform technology into future-oriented products and solutions that meet the needs of current and future generations.



We are trustworthy
Together we can make a difference. That's why our colleagues from various departments work together every day to improve our performance – both internally and in partnership with our suppliers and customers.

Our targets:



Achieved in 2022:
100% green electricity in our European production plants



Achieve by 2025:
20% recycled content in our products



Achieve by 2034:
Climate neutral production

REHAU Building Solutions for the whole building

Heat Networks

RAUVITHERM

- Pre-insulated PE-Xa pipe
- Flexible solution for heat networks in 25 – 160mm

RAUTHERMEX

- Pre-insulated PE-Xa pipe
- Efficient solution for heat networks 20 – 160mm

PP-R

- District heating pipes in 160 – 315mm
- Allows for fully polymer heat network

Sewerage Systems

AWADUKT

- Polypropylene sewer pipework

AWASCHACHT

- Polypropylene manhole chambers

Stormwater Management

RAUSIKKO

- Innovative stackable system with a range of loading specifications.

Acoustic Soil & Waste

RAUPIANO PLUS

- Complete solution for homes to large commercial buildings
- 17dB acoustic performance
- Up to 30% faster installation vs cast iron

Heating & Plumbing

RAUTITAN

- Universal system for drinking water and heating
- Sealed with no O-rings

PP-R Fiber

- Pipework for risers and corridors
- Lightweight for ease of installation

Underfloor heating and cooling

- Optimum thermal comfort
- Ideally pairs with low carbon heating

Smart Controls

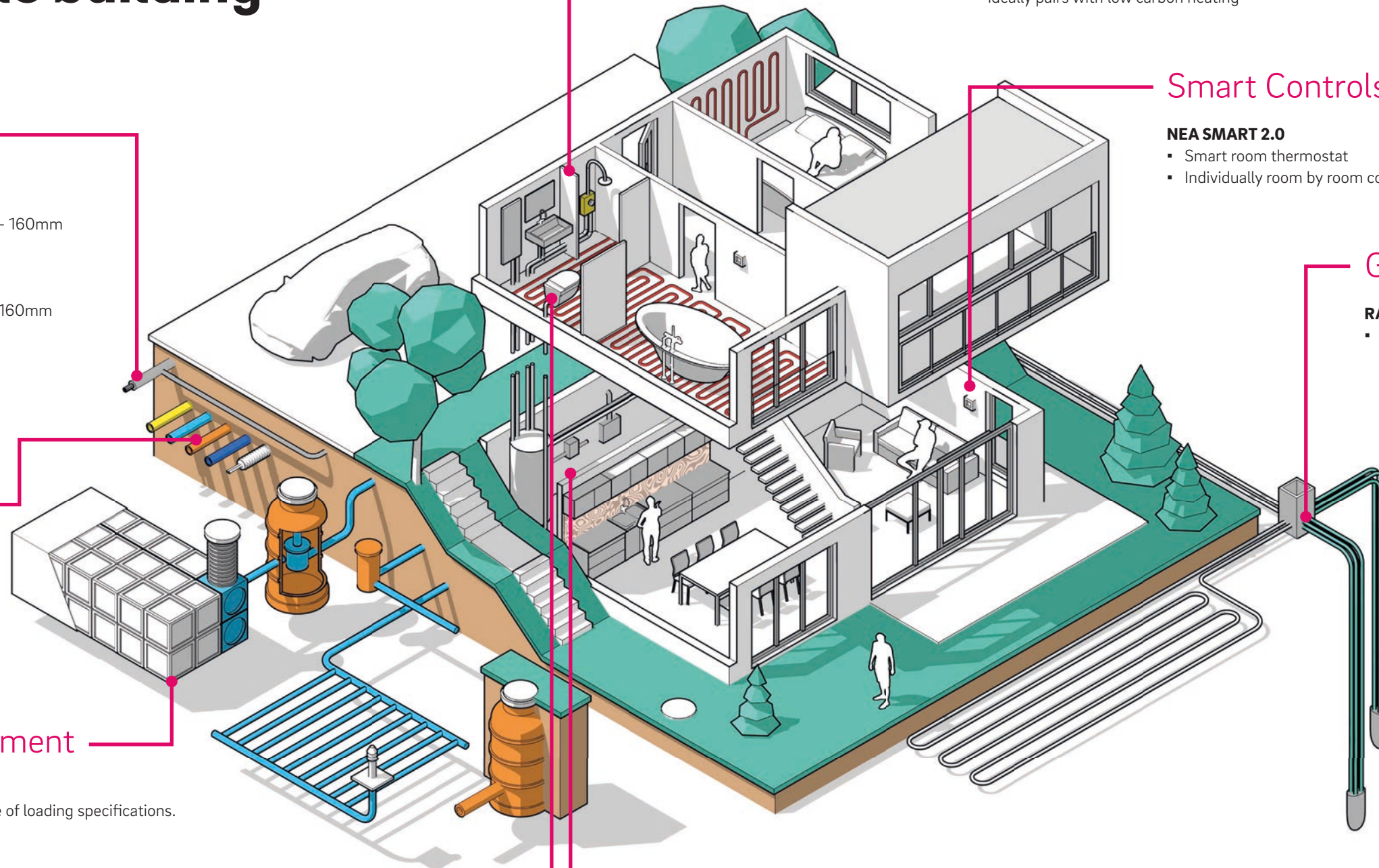
NEA SMART 2.0

- Smart room thermostat
- Individually room by room control

Ground Source

RAUGEO

- PE-Xa probes and collectors



Smart Leak Detection

RE.GUARD

- Detects burst pipes, leaks and other issues
- Automatically shuts off to prevent further damage

O-ring free heating & plumbing

High performance as standard

RAUTITAN



Reliability - Thanks to our Everloc™ compression sleeve jointing technology, RAUTITAN is leak-tight with no O-rings.



Fast installation - Simple visual inspection of the joint.



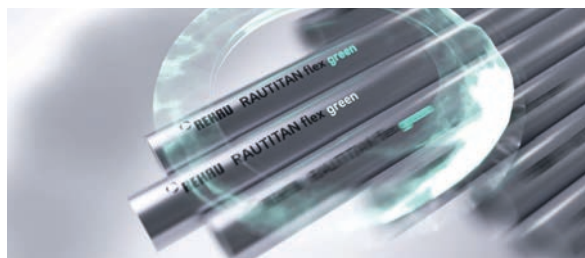
Future-proof - Use of lead-free gunmetal, ensuring highest standards of drinking water.



High performance - Minimal bore reduction from the fitting when the pipe is expanded.



Optimal hygiene - cavity-free joints preventing the build up of residue.



RAUTITAN Flex green

RAUTITAN universal pipe range is now available as a sustainable bio-based pipe with more than 90% CO₂ savings* during manufacture.

*based on life cycle assessment spanning stages A1 to A4 in accordance with EN 15804



PP-R Fiber

Pipework for risers and corridors up to 125mm, providing the complete plumbing solution in combination with RAUTITAN.

- No O-rings
- Pre-fabrication possible
- Improved flow rate
- High corrosion resistance





MEPA

In November 2022 the REHAU Group acquired MEPA, a leading sanitary technology company.

MEPA's expertise developing and supplying pre-wall constructions means REHAU can now offer M&E contractors a more complete plumbing solution when installing sanitaryware and bathrooms.

MEPA



Heat networks & energy centres

Reducing heat losses

In the drive to reduce carbon emissions from heating, many new residential and mixed use developments are connecting to a district heat network or installing remote energy centres on site. Polymer pipes are ideal for modern lower temperature heat networks linked to renewable sources such as heat pumps or waste heat.

REHAU is one of the market leaders in pre-insulated pipes and supply a fully polymer heat network for projects up to 16MW.

REHAU district heating pipes:

- RAUVITHERM and RAUTHERMEX PE-Xa pipes available from 25-160mm
- PP-R pipes available up to 315mm
- Uses EVERLOC™ compression sleeve joining technology
- Largest UK stock of pre-insulated pipes with full cutting service
- RAUVITHERM is the only PE-Xa pipe made in the UK



Heating & cooling solutions

Underfloor heating for optimum thermal comfort

The UK has committed to zero carbon by 2050, and decarbonising how we heat our buildings efficiently is a key challenge. Underfloor heating is ideally paired with low carbon heat pumps or can be used on a district heat network to distribute heat within a building.

REHAU has an underfloor heating and cooling solution for all your project needs covering both wet and dry floor constructions.

Systems include:

Screeded

- RAUFIX clip rail
- Tacker staples
- Industrial floor heating

Dry

- Floating floor
- Diffusion plate
- Sprung floor
- Acoustic batten



Thermally Active Building Solutions (TABS)

TABS is increasing in popularity as developers and specifiers are looking at ways to heat and cool buildings efficiently. It has been extensively used on education, retail and commercial buildings. The UK projects that TABS have been used on are often BREEAM "Excellent" or "Very Good" or Passivhaus certified.

TABS utilises the thermal mass of a building for heating and cooling. 20mm PE-Xa pipes are embedded in the concrete structure and joints can be made in the concrete using the leakproof EVERLOC™ jointing system.

- Utilises the thermal mass of the building
- Reduces need for air-conditioning
- Ideal with heat pumps





Smart controls

Energy-saving,
convenient, stylish

With the growing demand for smart heating controls, REHAU developed NEA Smart 2.0 to offer a stylish control solution with a wide range of smart features. Smart controls can offer up to 20% energy savings versus traditional heating controls.

The LED dot-matrix design is ideal for modern buildings and can be used on both residential and commercial projects.

- Unique design with energy saving LED dot-matrix display
- Wired and wireless versions can be paired to the same base station
- Up to 8 zones per base station but up to 60 zones possible when paired together
- Self-learning software to optimise performance
- Amazon Alexa integration and geofencing
- Simple installation wizard and over-the-air software updates



Sewerage systems

AWADUKT

Heavy duty polypropylene sewer pipes which are completely leak proof and have a life span of at least 100 years.

AWASCHACHT

The accessible plastic chamber made from polypropylene with an innovative construction prevents typical damage to the sewer chamber.

AWADOCK

Connection system offering a variety of options for an optimum and permanently leak-tight solution



Stormwater management

RAUSIKKO SX

Innovative stormwater management system sold via our exclusive partner, Hydro International Ltd. It is suitable for underground storage and infiltration applications as part of a sustainable drainage system.

- Easy to transport due to stackable design (345m³ per lorry)
- Saves space on site
- Quick to install due to modular design
- Extremely durable – suitable for high-traffic areas
- 96% storage coefficient



A first class service

From concept to installation

Supporting our customers every step of the way is key to a successful partnership. Our REHAU Hub in London was set up to provide specification support for our wide product range, alongside an opportunity to see our products first-hand. Across the UK and Ireland, REHAU has regional sales offices to provide expert advice. Whether it relates to pipe sizing, a non-standard application or general technical advice, we are here to help.

We offer several CIBSE-approved CPDs including:

- Polymer pipe for heating and cooling
- Introduction to sub-surface heating and cooling
- District heating and heat networks
- Acoustic soil and waste
- Thermally activated building structures



Accredited installers

REHAU has a network of trained contractors to ensure the highest installation standards.



On site support

Our technical team can visit site to assist with tool training, installation and commissioning.



UK stock

Our product ranges are stocked at REHAU in the UK and at major national distributors.



Design services

Unrivalled design support from concept to detailed design.



BIM

BIM ready

All our products are BIM Level 2 ready.



Opposite: White Collar Factory. Installed 150km of TABS pipework across 16 floors

Case studies

Installations across the UK



BBC White City Redevelopment, London
Size: Over 250 apartments and mixed use development
Product: Underfloor heating, heating and plumbing, chilled ceiling



Hungate Apartments, York
Size: Over 1,000 apartments
Product: RAUTITAN plumbing



Tate Modern, London
Size: 24,000m of pipework in new building extensions
Product: TABS



Hillpark Drive estate, Glasgow
Size: 8 apartments and 351 flats
Product: RAUTHERMEX pre-insulated pipe



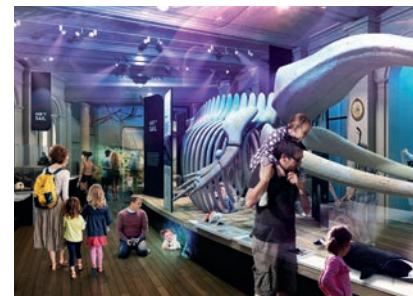
The Tower, 1 St. George Wharf, London
Size: 210 apartments
Product: Heating and plumbing



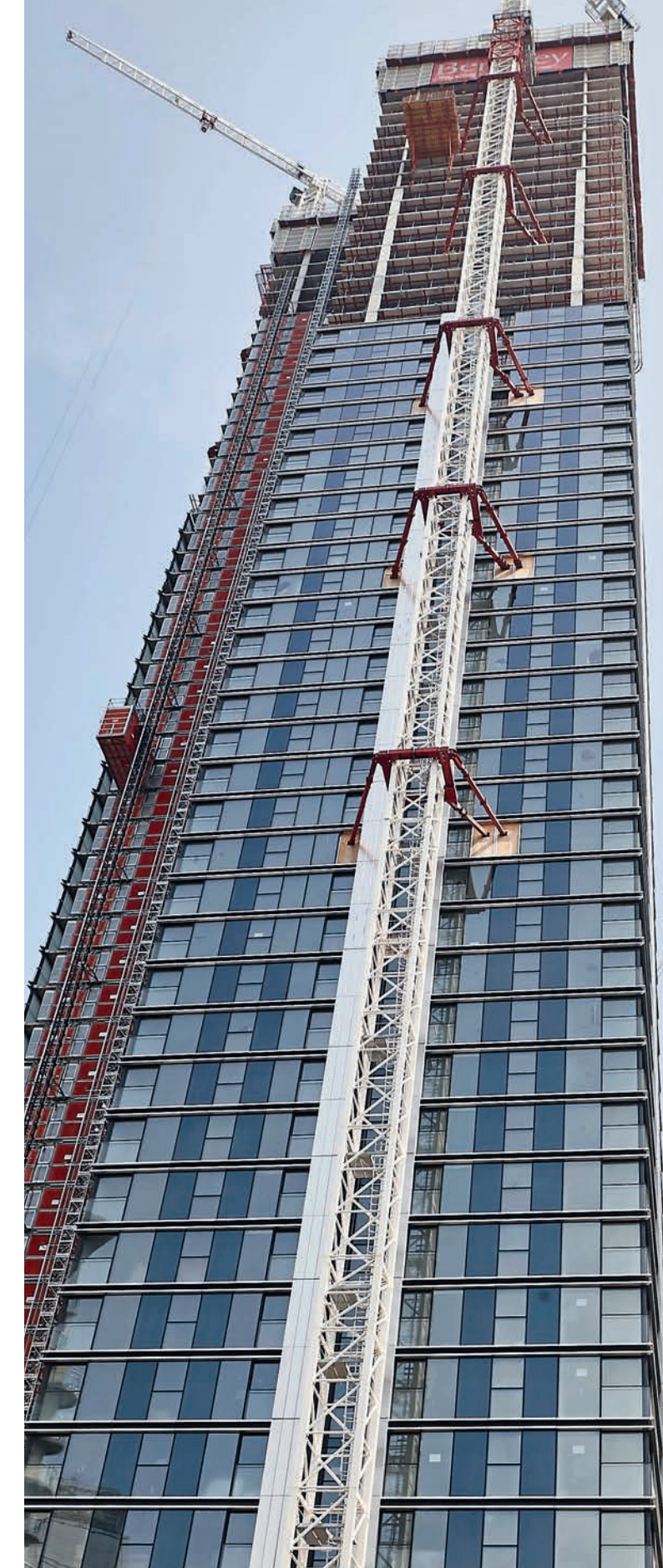
Regional Performance Centre, Dundee
Size: Pipe installed between the energy centre and rest of the development
Product: RAUTHERMEX pre-insulated pipe



Moxy hotel, Edinburgh
Size: 262 rooms
Product: RAUPIANO acoustic soil and waste drainage



Maritime Museum, Hull
Size: Heating system for whole museum
Product: RAUTITAN



South Quay Plaza, London
Size: 685 apartments, across 67 floors
Product: Underfloor heating



Follow us
[@REHAUrenewables](#)



Find us
[REHAU.UK](#)



Look for us
[REHAU_UK](#)



See us
[REHAULtd](#)



Connect to us
[REHAU-UK-Ltd](#)

This document is protected by copyright. All rights based on this are reserved. No part of this publication may be translated, reproduced or transmitted in any form or by any similar means, electronic or mechanical, photocopying, recording or otherwise, or stored in a data retrieval system.

© REHAU Ltd
Hill Court, Walford,
Ross-on-Wye, HR9 5QN

05 .2024