



---

# HOW TO USE THE RAUTOOL A-ONE

## USER NOTE

---

For all REHAU RAUTOOL installation tools, please read and observe all of the general and specific safety warnings and installation instructions before operating the tools. Regardless if the tool is to be used in the construction site or for any demonstration in a presentation to or with the customer!



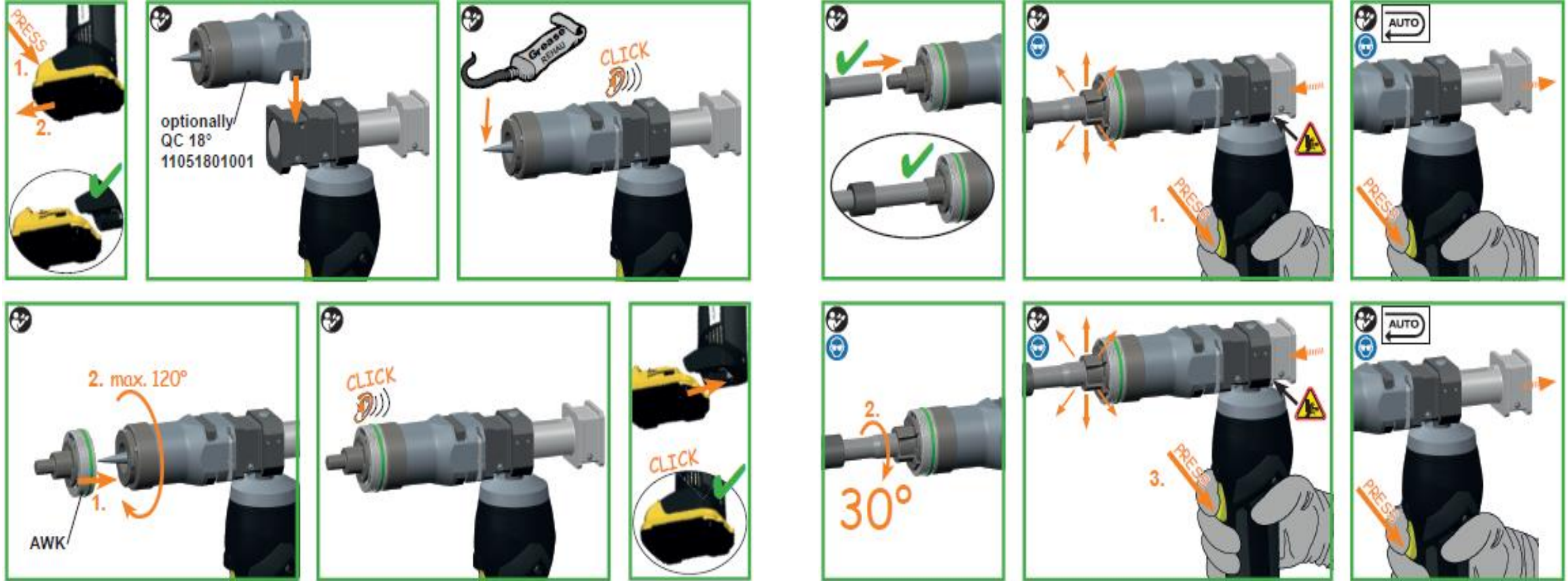
Read all of the safety warnings and assembly instructions prior to the initial operation of the tool



Follow these operating instructions and always keep the safety warnings with the tool.

In addition to the operating instructions, always observe generally applicable statutory and other binding regulations relating to the prevention of and protection against accidents.

# RAUTOOL - How to use the RAUTOOL A-one



WORK



SERVICE



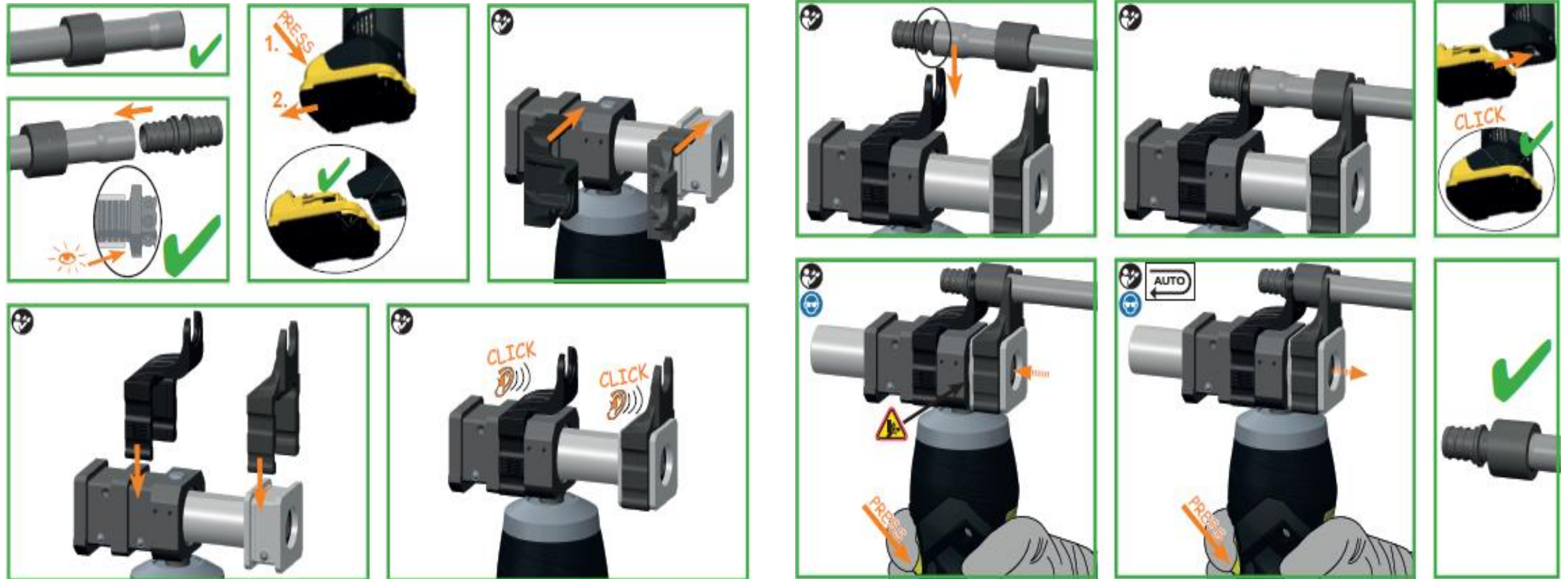
DON'T DO






REHAU  
Safety Instr.

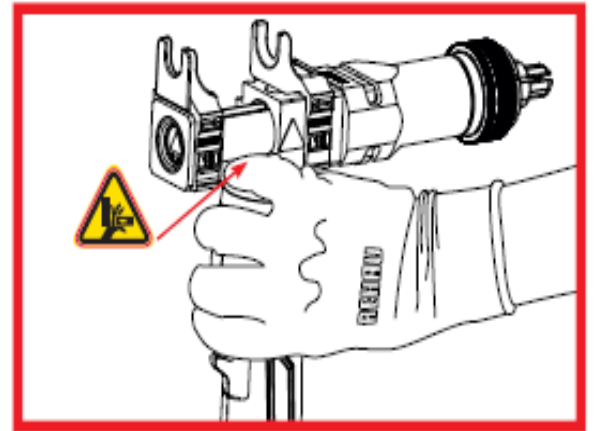
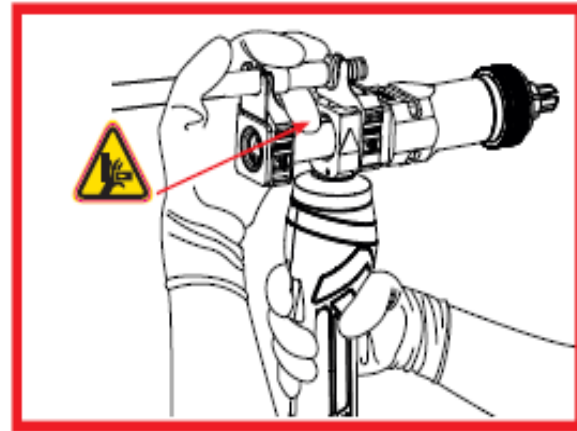
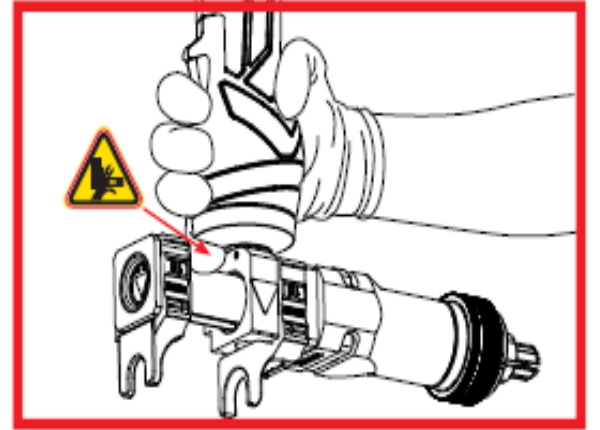
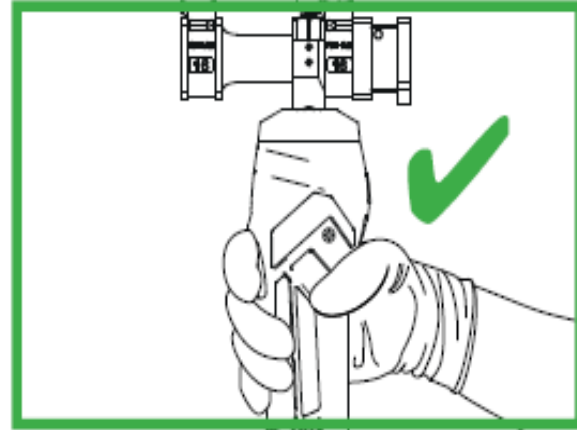


# RAUTOOL - How to use the RAUTOOL A-one



**WORK**  **SERVICE**  **DON'T DO**  **REHAU Safety Instr.** 

# RAUTOOL - How to use the RAUTOOL A-one



## General safety warnings:

- ✓ Keep your workplace clean and free of obstructions. Make sure there is always sufficient light.
- ✓ Keep children, pets and unauthorized persons away from the place at which you are working.
- ✓ Wear suitable working clothing. Do not wear loosely fitting clothes or jewellery! They may get caught in moving parts.  
Wear a hairnet if you have long hair. Use goggles.
- ✓ **Do not touch moving parts (risk of crushing fingers)!**
- ✓ Be alert! Only use the tool if you have received instructions on how to use it.
- ✓ Keep your tools in a safe place. When not in use, tools should be kept in dry, closed rooms out of reach of children.
- ✓ The tool is suitable for creating REHAU compression sleeve joints only. Do not use the tool for other purposes!
- ✓ Only operate the tool with original REHAU parts and accessories.
- ✓ Maintenance and repair work should be done only in a service centre authorised by REHAU. We will not be responsible for any work performed by an unauthorized person. The addresses of authorised service centres can be found in the attachment or they can be obtained from your REHAU sales office



---

**THANK YOU**

---