



PROFILES FOR SHOWER PARTITIONS

PROFILE PRINT D55100EN

CONTENT

1	General information	3
2	Profiles	5
2.1	Sealing profiles in RAU-PVC, crystal clear colours (rigid PVC)	5
2.1.1	Profiles with 5 mm overlap for 5 mm thick ESG*	5
2.1.2	Profiles with 5 mm overlap for 6 mm thick ESG*	6
2.1.3	Profiles with 5 mm overlap for 8 mm thick glass	6
2.1.4	Profiles with 12 mm overlap for 4 mm and 5 mm thick ESG*	8
2.1.5	Profiles with 12 mm overlap for 5 mm thick ESG*	8
2.1.6	Profiles with 12 mm overlap for 6 and 8 mm thick ESG*	10
2.1.7	Profiles with 12 mm overlap for 10 mm and 12 mm thick ESG*	12
2.2	Sealing profiles with aluminium surface	13
2.2.1	Profiles with 5 mm overlap for 8 mm thick ESG*	13
2.2.2	Profiles with 12 mm overlap for 6 and 8 mm thick ESG*	13
2.3	Sealing profiles in RAU-PVC	14
2.3.1	Profiles (for pushing-in) for 6 and 8 mm thick ESG*	14
2.3.2	Profiles (for pushing-in) for other thicknesses	14
2.4	Profiles for insertion into aluminium profiles	16
2.4.1	in RAU-PVC	16
2.4.2	in RAU-SRT	16
2.5	Glazing profiles	17
2.5.1	in RAU-PVC / RAU-PE	17
2.5.2	in RAU-SIK	17
2.6	Magnetic profiles in RAU-FER	18
2.6.1	Magnetic strips	18
2.6.2	Encapsulated magnetic strips	19
2.6.3	Magnetic strips with self-adhesive strip	19
2.6.4	T-magnets	20
2.6.5	Hat magnets	20
2.6.6	Stepped magnets	21
2.6.7	Special magnetic profiles	21
2.7	Other profiles	22
2.7.1	Strip seals in RAU-PVC	22
2.7.2	Door seal profiles for insertion in aluminium strips	22
2.7.3	Wall seal profiles in RAU-SIK	22
2.7.4	Hinge profiles in RAU-PVC for insertion into aluminium profiles	23
2.7.5	Shock damping profiles	23
2.7.6	Cover profiles	23
3	List of articles	24

*ESG = single-pane safety glass



Due to a system conversion to SAP in 2012, our article numbers have changed to material numbers.

The previous article numbers have become material numbers with 1 extra digit:

old: 123456 (article number)

new: 1123456 (material number)

To illustrate this, we have visually identified the additional digits:

1 = 1, e.g.: **1**123456

Please note that in the system all quotations, order confirmations, dispatch notes and invoices will largely only be issued with the 7-digit number.

1 GENERAL INFORMATION

Applications

Because of their high quality material formulation, especially aligned with your installation system, REHAU shower partition seal profiles are suitable for use in a wide variety of shower partition seal systems, for example.

- all-glass shower cubicle
- framework shower cubicles
- bath fixtures
- other types of partitions

Material

REHAU, as an innovative processor of polymer materials, constantly faces up to the demands of the market. Our specialists in matters of materials science are working continually on the further development of our material formulations.

Designation of material types:

The designations of material types provide information about the origin of REHAU (RAU), about the raw material (using the plastics abbreviations in general according to DIN 7728) and in the two to four-digit coding scheme about certain material properties.

The coding scheme with RAU-PVC is always four-digit. Numbers between 1100 and 1999 stand for rigid PVC, numbers between 3000 and 9999 for PVC containing plasticiser, whereby the first two figures show the hardness in Shore A.

Profiles with aluminium surface

The rigid PVC area (PVC1107) is covered with an alu strip in chrome finish. In order to avoid scratching in daily use or during cleaning, the outside of the alu strip is provided with a colourless protective lacquer.

Advantages:

Appearance:

- externally applied alu strip in glossy chrome finish
- no deterioration by PVC coating of the foil

Feel:

- "Metal touch" by externally applied alu strip

REHAU rigid/plasticised PVC (RAU-PVC)

Advantages offered by REHAU profiles in rigid/plasticised PVC:

UV resistance

UV resistance is tested in REHAU using XENON TEST 1200, cycle 102/18, alternate cycling.

Laboratory result: > 1,000 hrs until there is a noticeable change in colour!

Crystal clear colour matching (rigid PVC)

The high-quality RAU-PVC1107 formulation in combination with an optimum tool design enables REHAU to manufacture the rigid PVC range in a unique crystal clear design (Profiles pages 5-12)

Acrylic compatibility

Contact by those profiles made of plasticised PVC with acrylic, PS sheets etc can lead to stress cracking and hardening of plasticised PVCs.

The use of RAU-PVC 7539 (acrylic resistant formulation) eliminates this chemical reaction.

So, for example, almost all water repellent profiles at REHAU are supplied using PVC 7539.

Testing is done following DIN 53405, which states that migration of plasticiser during the test period of 15 days, at 50°C with 5 kg loading may amount to max. 10 mg.

Structured injection moulding of magnetic pockets

The magnetic pockets of all door gasket profiles are injection moulded in a structured material grade (plasticised PVC).

This counteracts the profiles sticking together and thus any impairment of the door seal.

Structured soft lips

Structured soft PVC lips improve the sliding behaviour as regards the glass or adjacent components.

REHAU silicone (RAU-SIK)

Long-lasting elasticity and recovery capacity are ensured through our own REHAU silicone formulations based on hot-cross-linked silicones. This prevents mould forming.

With glazing beads (Profiles page 17) a thread is co-extruded in the bead profile to protect against excessive stretching.

REHAU ferrite (RAU-FER)

REHAU ferrite is a flexible polymer compound containing barium ferrite to make it magnetisable. The ferrite content gives the material a black-brown colour.

Magnetic force:

The magnetic force of the magnetic profiles is measured with a gap of 0.4 mm against an iron counterweight and given in N/cm. With stepped magnets the measurement is made against an iron counterweight with the same stepped formation.

REHAU quality management

Quality is monitored in REHAU from the goods inwards inspection of raw material, through the control of the material values of the extruded profiles, to dispatch on the basis of the REHAU quality assurance system.

The REHAU QM system meets the requirements of the internationally recognised Norm ISO 9001. Regular inspection audits by the certifying company TÜV Süd Management Service GmbH ensure the ISO certificate is retained.

Delivery make-up

Depending on the type of product, profiles are supplied in:

- production lengths (length tolerance normally +/- 10 mm)
- spools (magnetic strips)

Other delivery arrangements are available on request.

Packaging

Normally profiles are supplied packed in cartons.

Plasticised PVC lips, which could be squashed during transport / storage, are protected in addition by using polystyrene strips and reinforced cardboard interlays inserted sideways in the boxes. Special customer-specific packaging can be provided on request.

Customer-specific developments

This profile brochure shows the freely available REHAU range for the shower partition construction. All profiles can be varied to be customer-specific for delivery make-up (delivery length) and colour, among other things.

Please also refer to our Technical Delivery Specification V-D55/01. Naturally you can also develop YOUR profile with REHAU: designed by us according to your ideas, putting into practice your knowledge and skills for meeting quite specific tasks. Whether simple or complex shapes, whether existing or specially formulated materials, REHAU makes its know-how, knowledge of materials and qualified in-house tool and die shop available to you.

Our service for you in practice is:

- application engineering advice
- our own formulation for materials
- exact colour matching in the REHAU colour laboratory
- optimum tool design in our own tool and die shop
- QM system according to ISO 9001
- fabrication into components ready to be installed

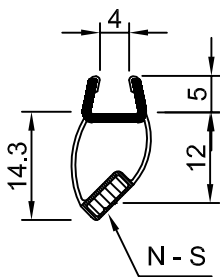
2 PROFILES

2.1 Sealing profiles in RAU-PVC, crystal clear colours (rigid PVC)

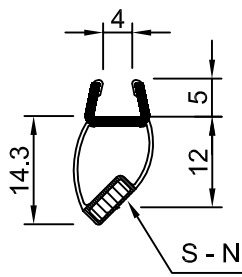
Rigid PVC in crystal clear colours; plasticised part with transparent textured or transparent clear surface, Shore A 75°, acrylic resistant if necessary; door sealing profiles with magnetic inlay: Magnet pockets encapsulated in single colour or transparent textured

material, soft PVC flexible bellows in transparent clear or transparent textured material, magnet 2-pole.

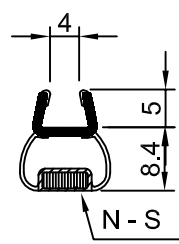
2.1.1 Profiles with 5 mm overlap for 5 mm thick ESG*



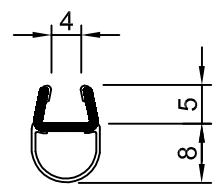
Mat. No. **1**655222
Magnetic strength 0.18 N/cm



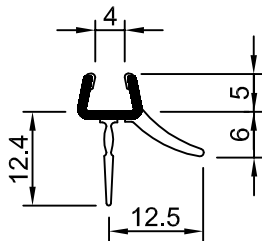
Mat. No. **1**655232
Magnetic strength 0.18 N/cm



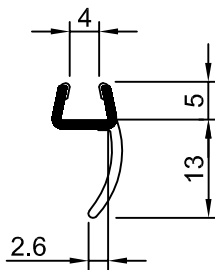
Mat. No. **1**655242
Magnetic strength 0.18 N/cm



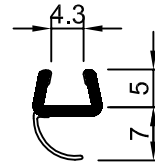
Mat. No. **1**655705



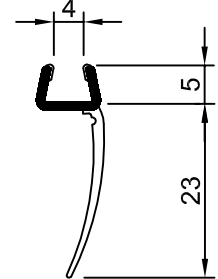
Mat. No. **1**655715



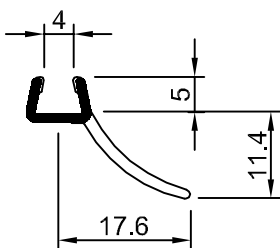
Mat. No. **1**655725



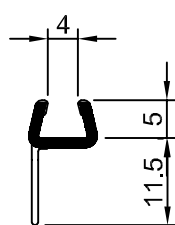
Mat. No. **1**655735



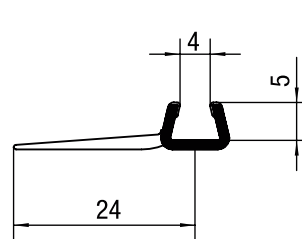
Mat. No. **1**655755



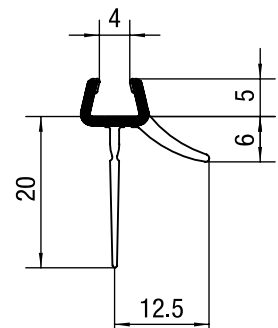
Mat. No. **1**655745



Mat. No. **1**655785



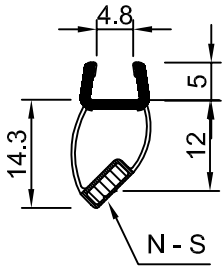
Mat. No. **1**655795



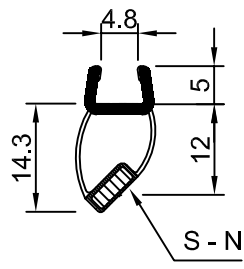
Mat. No. **1**655345

NB: The extended material number applies for all SAP countries: **1** = 1

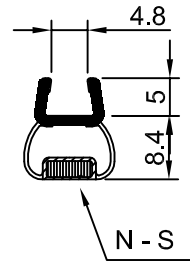
2.1.2 Profiles with 5 mm overlap for 6 mm thick ESG*



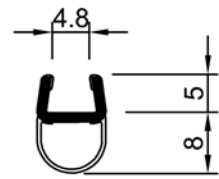
Mat. No. **1**656222
Magnetic strength 0.18 N/cm



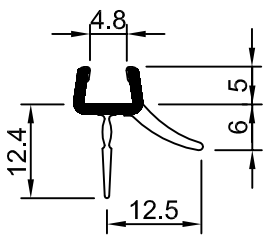
Mat. No. **1**656232
Magnetic strength 0.18 N/cm



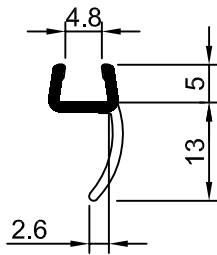
Mat. No. **1**656242
Magnetic strength 0.18 N/cm



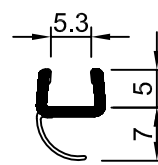
Mat. No. **1**656705



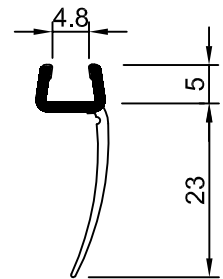
Mat. No. **1**656715



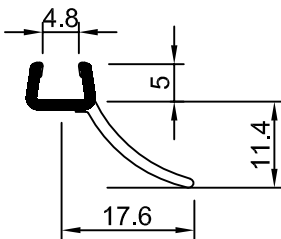
Mat. No. **1**656725



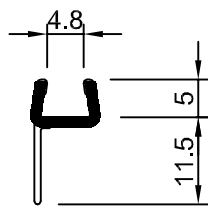
Mat. No. **1**656735



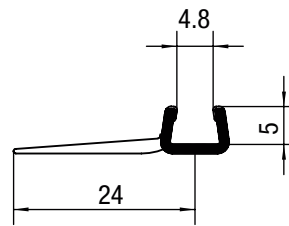
Mat. No. **1**656755



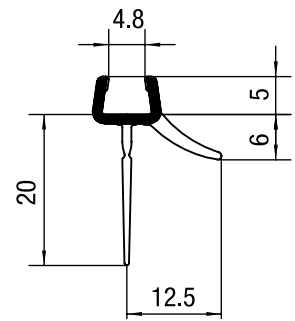
Mat. No. **1**656745



Mat. No. **1**656785

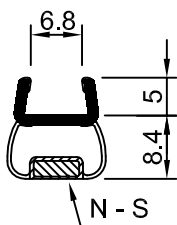


Mat. No. **1**656795

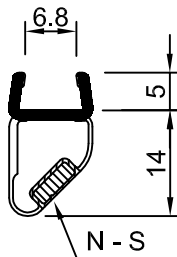


Mat. No. **1**656345

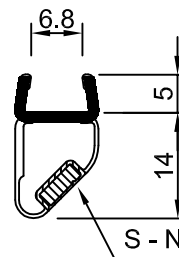
2.1.3 Profiles with 5 mm overlap for 8 mm thick ESG*



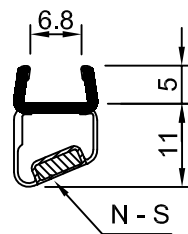
Mat. No. **1**653242
Magnetic strength 0.18 N/cm



Mat. No. **1**653222
Magnetic strength 0.18 N/cm

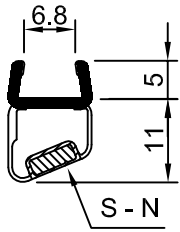


Mat. No. **1**653232
Magnetic strength 0.18 N/cm

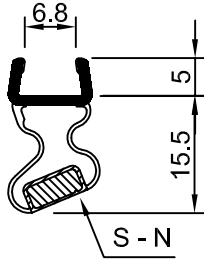


Mat. No. **1**653121
Magnetic strength 0.18 N/cm

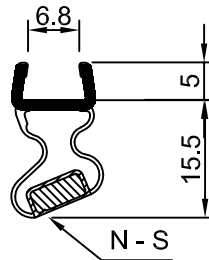
NB: The extended material number applies for all SAP countries: **1** = 1



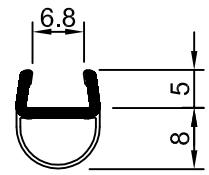
Mat. No. **1**653131
Magnetic strength 0.18 N/cm



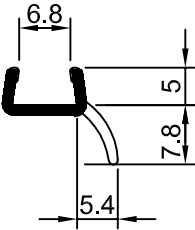
Mat. No. **1**653202
Magnetic strength 0.24 N/cm



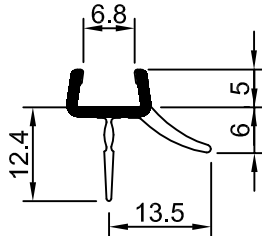
Mat. No. **1**653212
Magnetic strength 0.24 N/cm



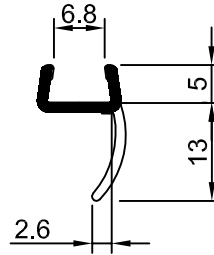
Mat. No. **1**653300



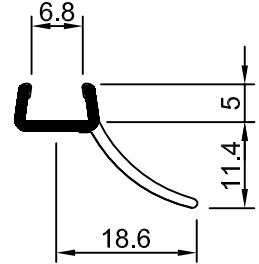
Mat. No. **1**653310



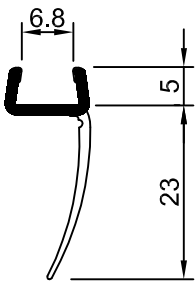
Mat. No. **1**653320



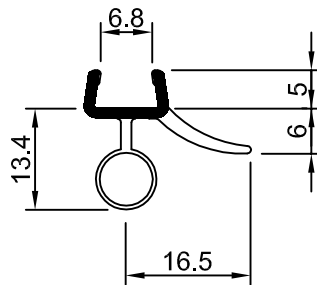
Mat. No. **1**653330



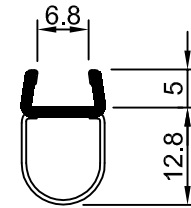
Mat. No. **1**653340



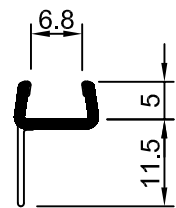
Mat. No. **1**653350



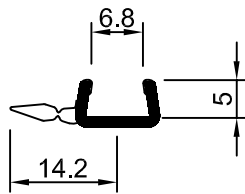
Mat. No. **1**653360



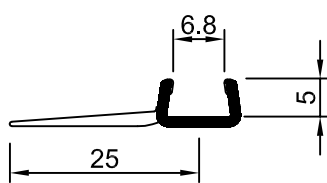
Mat. No. **1**653370



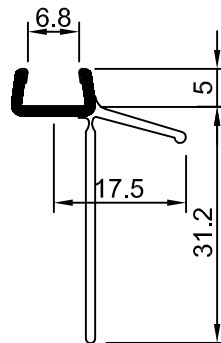
Mat. No. **1**653380



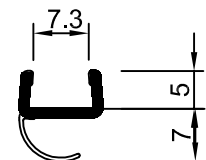
Mat. No. **1**653390



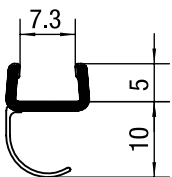
Mat. No. **1**653400



Mat. No. **1**653405



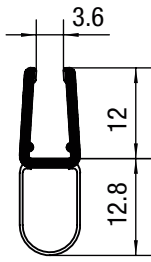
Mat. No. **1**653415



Mat. No. **1**653020

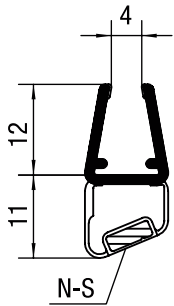
NB: The extended material number applies for all SAP countries: **1** = 1

2.1.4 Profiles with 12 mm overlap for 4 mm and 5 mm thick ESG*

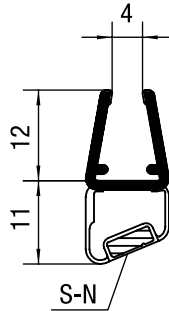


Mat. No. **1**654720

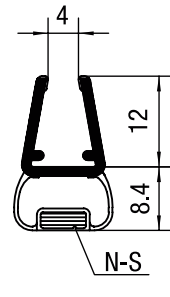
2.1.5 Profiles with 12 mm overlap for 5 mm thick ESG*



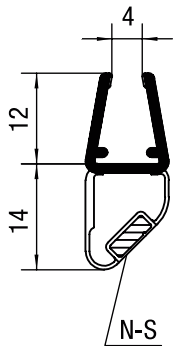
Mat. No. **1**665121
Magnetic strength 0.18 N/cm



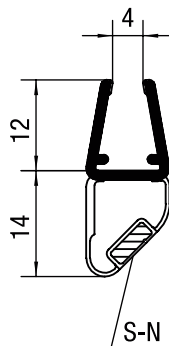
Mat. No. **1**665131
Magnetic strength 0.18 N/cm



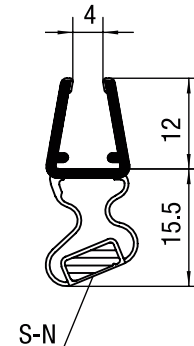
Mat. No. **1**665242
Magnetic strength 0.18 N/cm



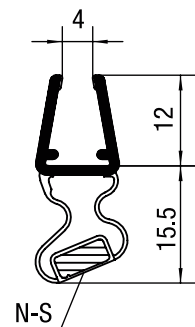
Mat. No. **1**665222
Magnetic strength 0.18 N/cm



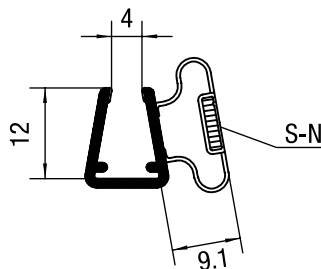
Mat. No. **1**665232
Magnetic strength 0.18 N/cm



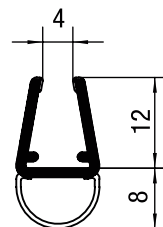
Mat. No. **1**665202
Magnetic strength 0.24 N/cm



Mat. No. **1**665212
Magnetic strength 0.24 N/cm

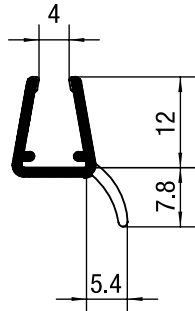


Mat. No. **1**665252
Magnetic strength 0.18 N/cm

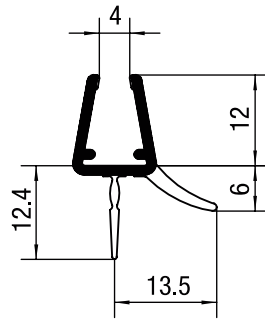


Mat. No. **1**665301

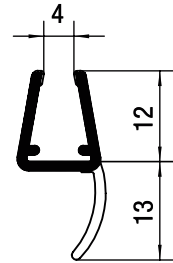
NB: The extended material number applies for all SAP countries: **1** = 1



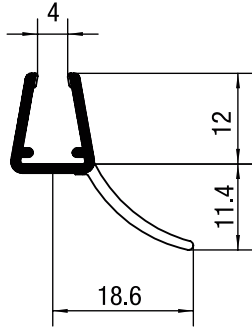
Mat. No. 1665311



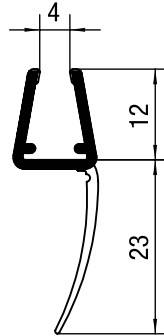
Mat. No. 1665321



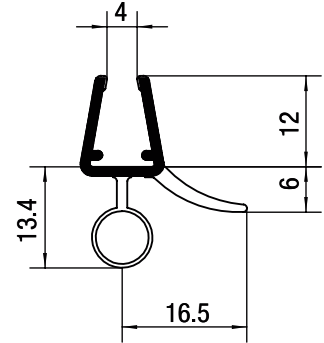
Mat. No. 1665331



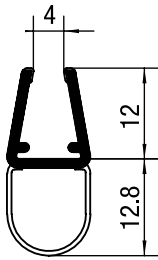
Mat. No. 1665341



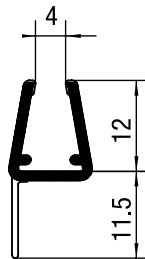
Mat. No. 1665351



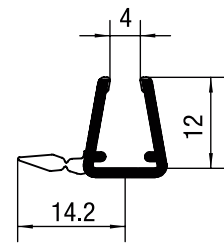
Mat. No. 1665361



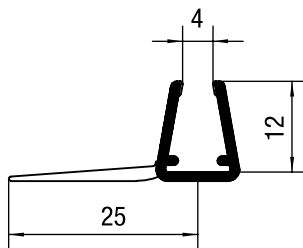
Mat. No. 1665371



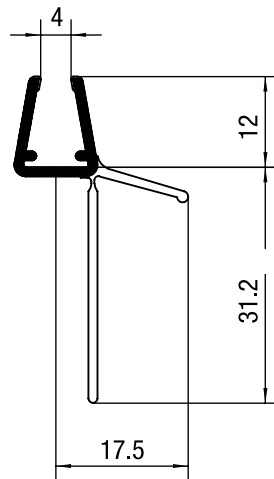
Mat. No. 1665381



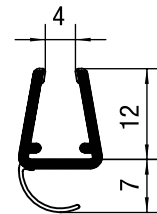
Mat. No. 1665391



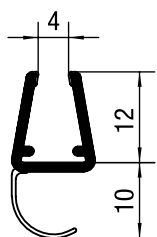
Mat. No. 1665401



Mat. No. 1665405



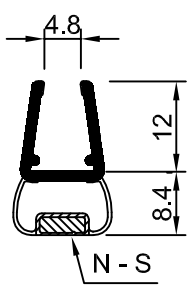
Mat. No. 1665415



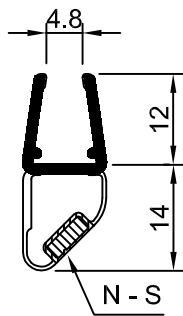
Mat. No. 1665425

NB: The extended material number applies for all SAP countries: 1 = 1

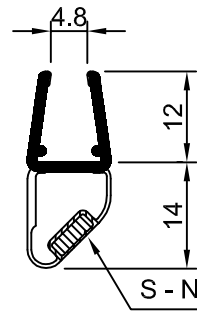
2.1.6 Profiles with 12 mm overlap for 6 and 8 mm thick ESG*



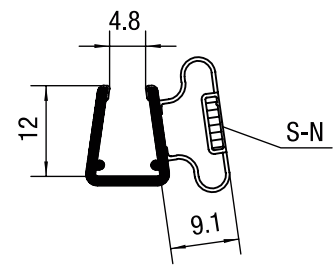
Mat. No. **1**652242
Magnetic strength 0.18 N/cm



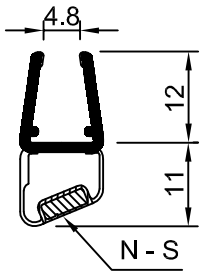
Mat. No. **1**652222
Magnetic strength 0.18 N/cm



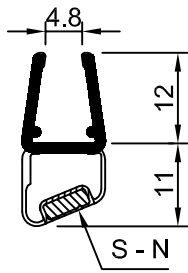
Mat. No. **1**652232
Magnetic strength 0.18 N/cm



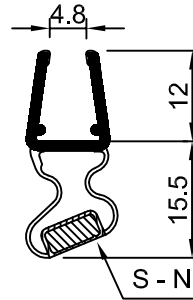
Mat. No. **1**652252
Magnetic strength 0.18 N/cm



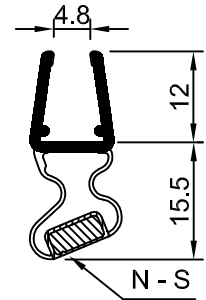
Mat. No. **1**652121
Magnetic strength 0.18 N/cm



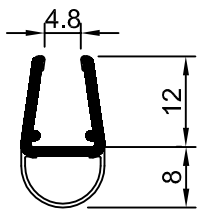
Mat. No. **1**652131
Magnetic strength 0.24 N/cm



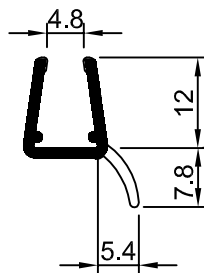
Mat. No. **1**652202
Magnetic strength 0.24 N/cm



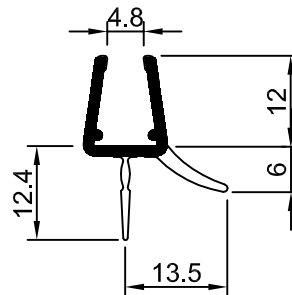
Mat. No. **1**652212
Magnetic strength 0.24 N/cm



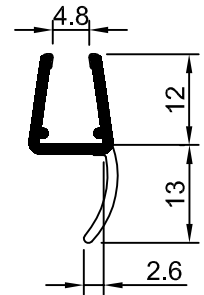
Mat. No. **1**652300



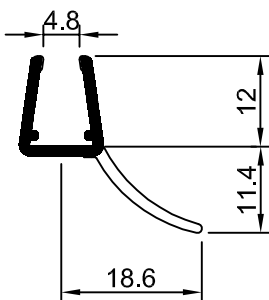
Mat. No. **1**652310



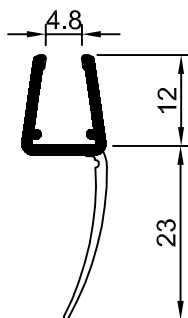
Mat. No. **1**652320



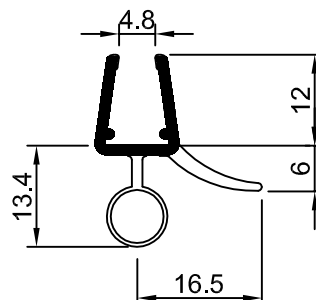
Mat. No. **1**652330



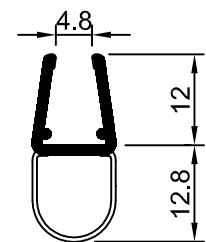
Mat. No. **1**652340



Mat. No. **1**652350

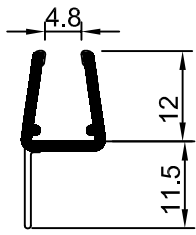


Mat. No. **1**652360

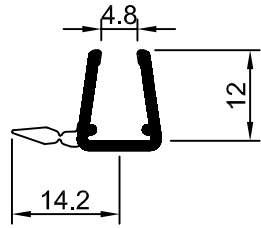


Mat. No. **1**652370

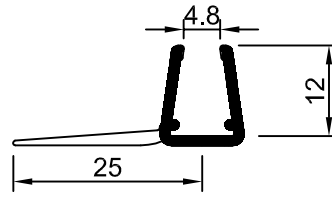
NB: The extended material number applies for all SAP countries: **1** = 1



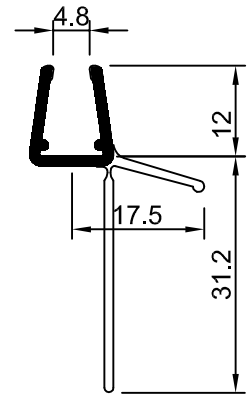
Mat. No. **1**652380



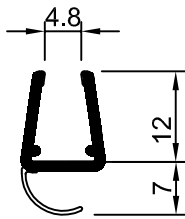
Mat. No. **1**652390



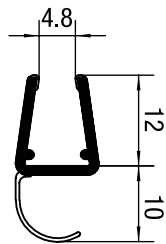
Mat. No. **1**652400



Mat. No. **1**652405



Mat. No. **1**652415

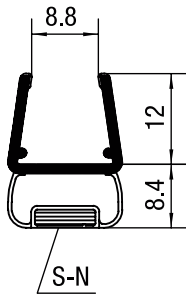


Mat. No. **1**652425

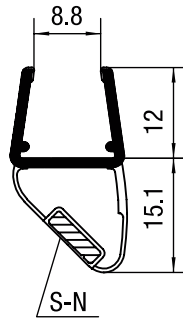


NB: The extended material number applies for all SAP countries: **1** = 1

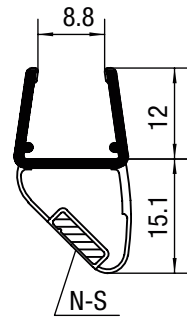
2.1.7 Profiles with 12 mm overlap for 10 mm and 12 mm thick ESG*



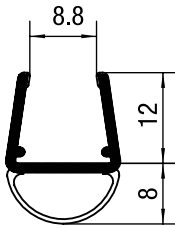
Mat. No. **1**660242
Magnetic strength 0.24 N/cm



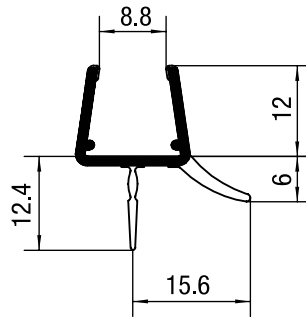
Mat. No. **1**660222
Magnetic strength 0.24 N/cm



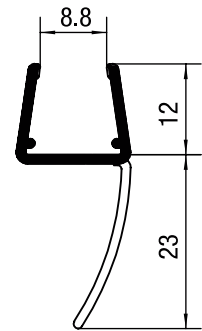
Mat. No. **1**660232
Magnetic strength 0.24 N/cm



Mat. No. **1**660305



Mat. No. **1**660315



Mat. No. **1**660325

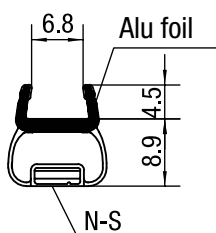
NB: The extended material number applies for all SAP countries: **1** = 1

2.2 Sealing profiles with aluminium surface

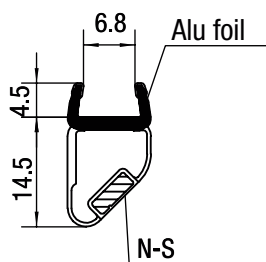
The rigid PVC area is covered with an aluminium strip in chrome finish; plasticised part with transparent textured or transparent clear surface, Shore A 75°, depending on application available in acrylic resistant formulation.

Door seal profiles with magnetic inlay: Magnet pockets in solid colour or transparent textured material, plasticised PVC flexible bellows in transparent clear or transparent textured material, magnet 2-pole

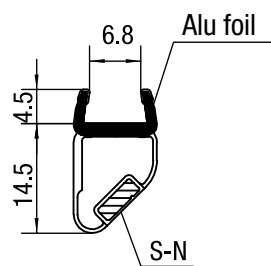
2.2.1 Profiles with 5 mm overlap for 8 mm thick ESG*



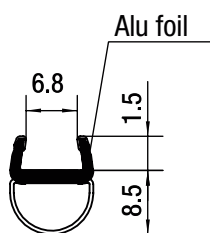
Mat. No. **1**663242
Magnetic strength 0.18 N/cm



Mat. No. **1**663222
Magnetic strength 0.18 N/cm

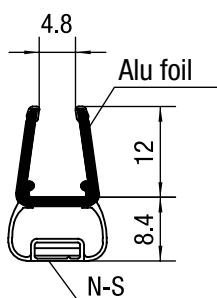


Mat. No. **1**663232
Magnetic strength 0.18 N/cm

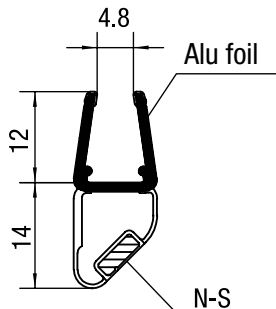


Mat. No. **1**663415

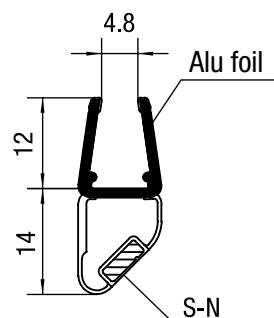
2.2.2 Profiles with 12 mm overlap for 6 and 8 mm thick ESG*



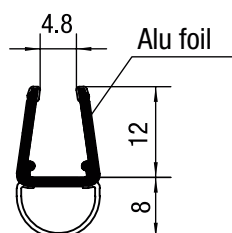
Mat. No. **1**662242
Magnetic strength 0.18 N/cm



Mat. No. **1**662222
Magnetic strength 0.18 N/cm



Mat. No. **1**662232
Magnetic strength 0.18 N/cm



Mat. No. **1**662305

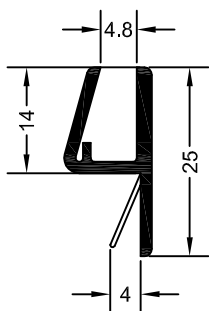
NB: The extended material number applies for all SAP countries: **1** = 1

2.3 Sealing profiles in RAU-PVC

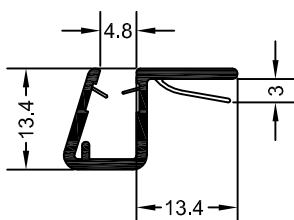
Conventional transparent colour (rigid PVC)

Rigid PVC in transparent colors; plasticized part in transparent textured or transparent clear surface; Shore A 75°C, depending on application available in acrylic resistant formulation.

2.3.1 Profiles (for pushing-in) for 6 and 8 mm thick ESG*

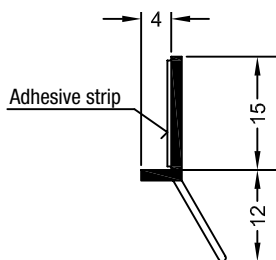


Mat. No. **1**636394

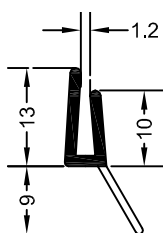


Mat. No. **1**632836

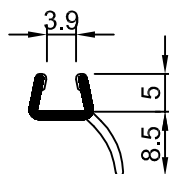
2.3.2 Profiles (for pushing-in) for other thicknesses



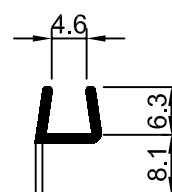
Mat. No. **1**632576
optional glass thickness



Mat. No. **1**632586
Glass thickness 2 to 2.5 mm

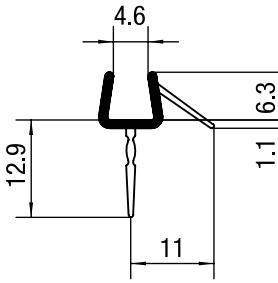


Mat. No. **1**639384
Glass thickness 5 mm

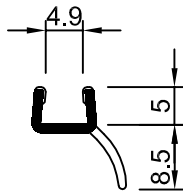


Mat. No. **1**650048
Glass thickness 6 mm

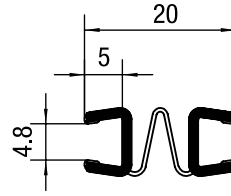
NB: The extended material number applies for all SAP countries: **1** = 1



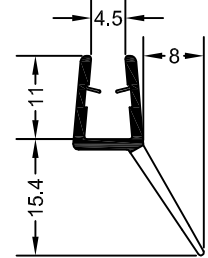
Mat. No. **1**650080
Glass thickness 6 mm



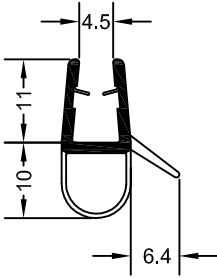
Mat. No. **1**639385
Glass thickness 6 mm



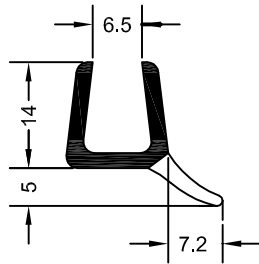
Mat. No. **1**626883
Glass thickness 6 mm



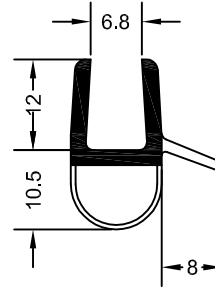
Mat. No. **1**633214
Glass thickness 6 mm



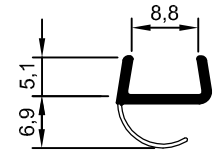
Mat. No. **1**633224
Glass thickness 6 mm



Mat. No. **1**636021
Glass thickness 8 mm



Mat. No. **1**600784
Glass thickness 8 mm



Mat. No. **1**650124
Glass thickness 10 mm

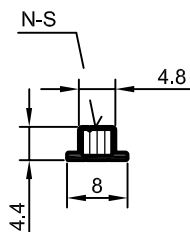
2.4 Profiles for insertion into aluminium profiles

2.4.1 in RAU-PVC

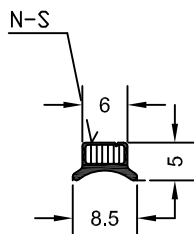
in plasticised RAU-PVC, Shore-A 80, opaque colours

N-S: 2-pole magnetised surface, north-south

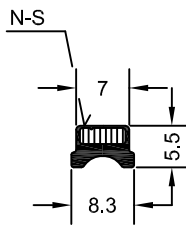
S-N: 2-pole magnetised surface, south-north



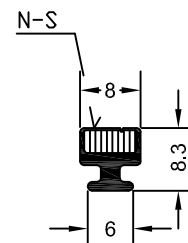
Mat. No. **1**650084
Magnetic strength 0.11 N/cm



Mat. No. **1**650039
Magnetic strength 0.13 N/cm

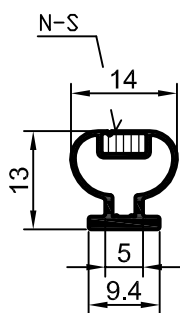


Mat. No. **1**632816
Magnetic strength 0.18 N/cm

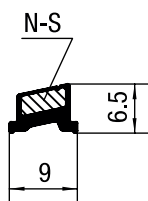


Mat. No. **1**650040
Magnetic strength 0.24 N/cm

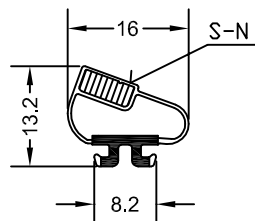
in rigid/plasticised RAU-PVC, plasticised part Shore A 75; opaque colours



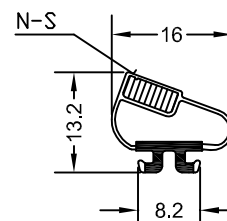
Mat. No. **1**650081
Magnetic strength 0.25 N/cm



Mat. No. **1**626746
Magnetic strength 0.18 N/cm



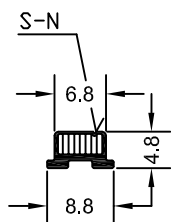
Mat. No. **1**637978
Magnetic strength 0.24 N/cm



Mat. No. **1**637988
Magnetic strength 0.24 N/cm

2.4.2 in RAU-SRT

Shore-A 70, opaque colours

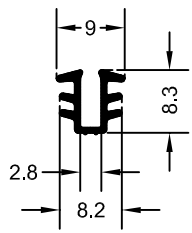


Mat. No. **1**650014
Magnetic strength 0.12 N/cm

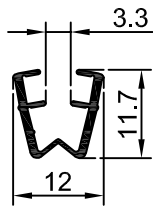
NB: The extended material number applies for all SAP countries: **1** = 1

2.5 Glazing profiles

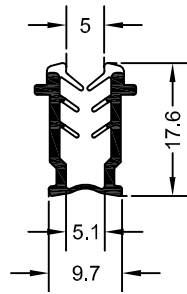
2.5.1 in RAU-PVC / RAU-PE



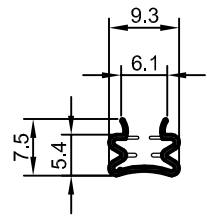
Mat. No. **1**601712
plasticised RAU-PVC, Shore-A 76;
transparent



Mat. No. **1**650021
plasticised RAU-PE, Shore-A 93;
transparent



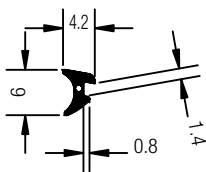
Mat. No. **1**615003
Rigid/soft RAU-PVC, transparent,
plasticised part Shore-A 70



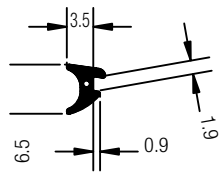
Mat. No. **1**650023
Rigid/soft RAU-PVC, transparent,
plasticised part Shore-A 70

2.5.2 in RAU-SIK

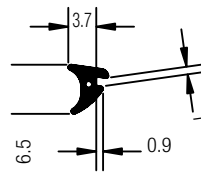
Shore-A 75 transparent; with protection against excessive stretching
(opaque colours on request)



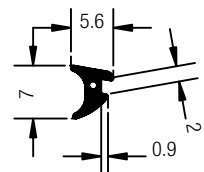
Mat. No. **1**834681



Mat. No. **1**835801



Mat. No. **1**835821



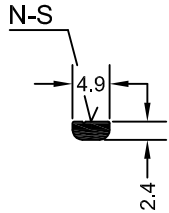
Mat. No. **1**835721

2.6 Magnetic profiles in RAU-FER

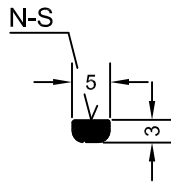
2.6.1 Magnetic strips

Colour: black-brown

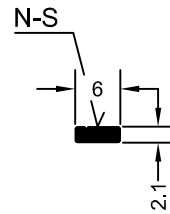
N-S: 2-pole magnetised surface, north-south



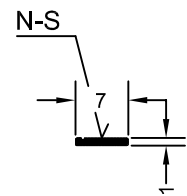
Mat. No. **1**650004
Magnetic strength 0.12 N/cm



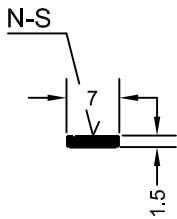
Mat. No. **1**622082
Magnetic strength 0.14 N/cm



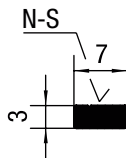
Mat. No. **1**604943
Magnetic strength 0.09 N/cm
Mat. No. **1**638423
Magnetic strength 0.13 N/cm
Mat. No. **1**600064
Magnetic strength 0.18 N/cm



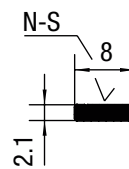
Mat. No. **1**632812
Magnetic strength 0.09 N/cm



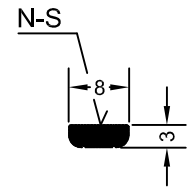
Mat. No. **1**606063
Magnetic strength 0.13 N/cm



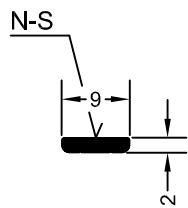
Mat. No. **1**600269
Magnetic strength 0.24 N/cm



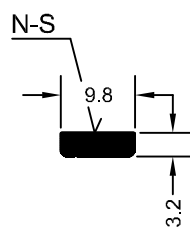
Mat. No. **1**650267
Magnetic strength 0.24 N/cm



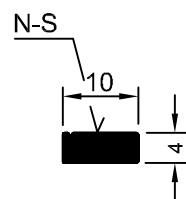
Mat. No. **1**629990
Magnetic strength 0.26 N/cm



Mat. No. **1**600258
Magnetic strength 0.13 N/cm



Mat. No. **1**632423
Magnetic strength 0.36 N/cm



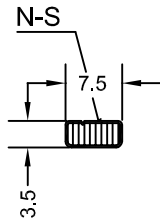
Mat. No. **1**625468
Magnetic strength 0.39 N/cm

NB: The extended material number applies for all SAP countries: **1** = 1

2.6.2 Encapsulated magnetic strips

in RAU-PVC, Shore-A 75, opaque colours

N-S: 2-pole magnetised surface, north-south

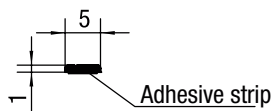


Mat. No. **1**650193
Magnetic strength 0.24 N/cm

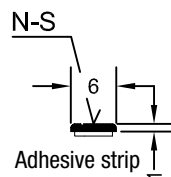
2.6.3 Magnetic strips with self-adhesive strip

N-S: 2-pole magnetised surface, north-south

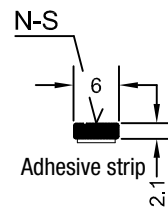
N-S-N-S: 4-pole magnetised surface north-south-north-south



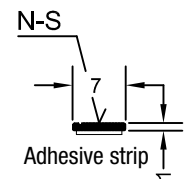
Mat. No. **1**626834
Magnetic strength 0.06 N/cm



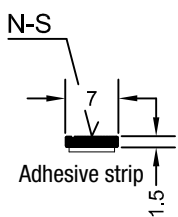
Mat. No. **1**626502
Magnetic strength 0.06 N/cm



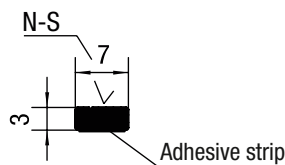
Mat. No. **1**604983
Magnetic strength 0.09 N/cm



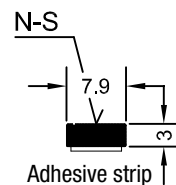
Mat. No. **1**636967
Magnetic strength 0.06 N/cm
Mat. No. **1**626692
Magnetic strength 0.09 N/cm



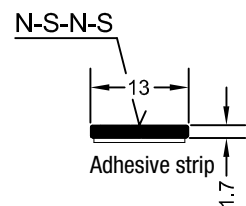
Mat. No. **1**627552
Magnetic strength 0.13 N/cm



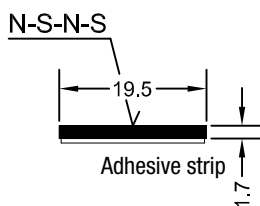
Mat. No. **1**627136
Magnetic strength 0.24 N/cm



Mat. No. **1**606983
Magnetic strength 0.28 N/cm



Mat. No. **1**601627
Magnetic strength 0.18 N/cm

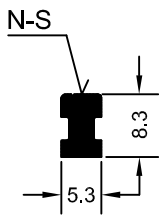


Mat. No. **1**631301
Magnetic strength 0.51 N/cm

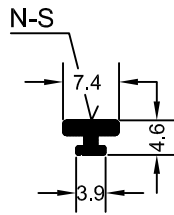
NB: The extended material number applies for all SAP countries: **1** = 1

2.6.4 T-magnets

N-S: 2-pole magnetised surface, north-south



Mat. No. **1**630472
Magnetic strength 0.09 N/cm



Mat. No. **1**637975
Magnetic strength 0.12 N/cm

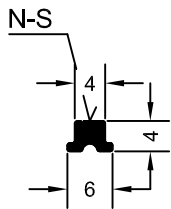
2.6.5 Hat magnets

N-S: 2-pole magnetised surface, north-south

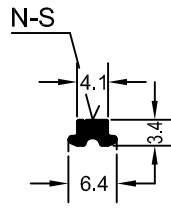
N-S-N: 3-pole magnetised surface, north-south-north

S-N-S: 3-pole magnetised surface, 3-pole south-north-south

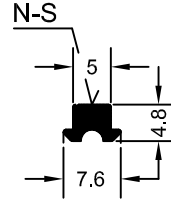
S-N-S-N: 4-pole magnetised surface, south-north-south-north



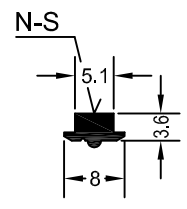
Mat. No. **1**606663
Magnetic strength 0.09 N/cm



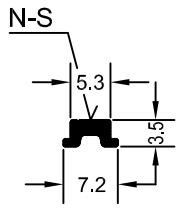
Mat. No. **1**632832
Magnetic strength 0.12 N/cm



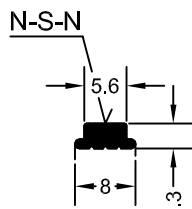
Mat. No. **1**629562
Magnetic strength 0.18 N/cm



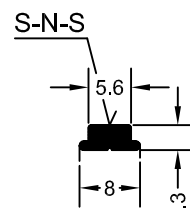
Mat. No. **1**618214
Magnetic strength 0.18 N/cm



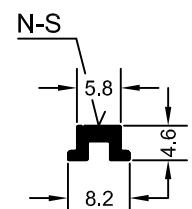
Mat. No. **1**639422
Magnetic strength 0.09 N/cm



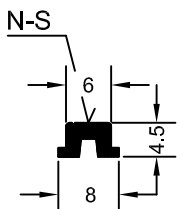
Mat. No. **1**634093
Magnetic strength 0.13 N/cm



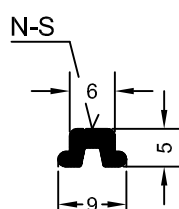
Mat. No. **1**634083
Magnetic strength 0.13 N/cm



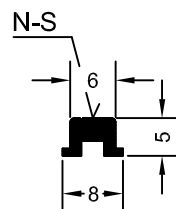
Mat. No. **1**636153
Magnetic strength 0.12 N/cm



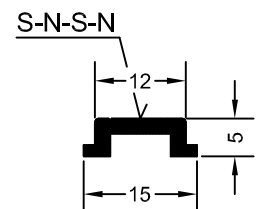
Mat. No. **1**630452
Magnetic strength 0.11 N/cm
Mat. No. **1**626892
Magnetic strength 0.16 N/cm



Mat. No. **1**628632
Magnetic strength 0.10 N/cm
Mat. No. **1**603414
Magnetic strength 0.20 N/cm



Mat. No. **1**626312
Magnetic strength 0.15 N/cm



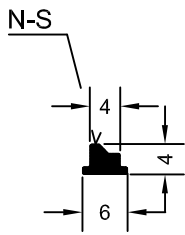
Mat. No. **1**625982
Magnetic strength 0.13 N/cm

NB: The extended material number applies for all SAP countries: **1** = 1

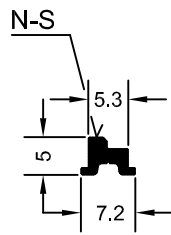
2.6.6 Stepped magnets

N-S: 2-pole magnetised surface, north-south

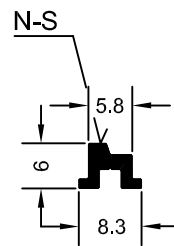
S-N: 2-pole magnetised surface, south-north



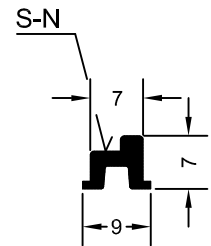
Mat. No. **1**636114
Magnetic strength 0.17 N/cm
Mat. No. **1**600744
Magnetic strength 0.20 N/cm



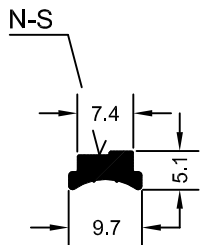
Mat. No. **1**637545
Magnetic strength 0.35 N/cm



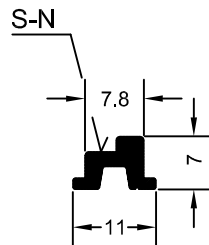
Mat. No. **1**636233
Magnetic strength 0.17 N/cm



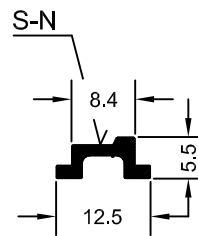
Mat. No. **1**627852
Magnetic strength 0.16 N/cm



Mat. No. **1**633915
Magnetic strength 0.15 N/cm
Mat. No. **1**639073
Magnetic strength 0.32 N/cm



Mat. No. **1**634403
Magnetic strength 0.16 N/cm



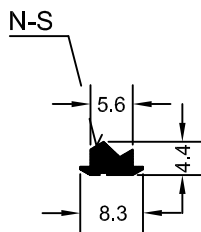
Mat. No. **1**602094
Magnetic strength 0.24 N/cm

2.6.7 Special magnetic profiles

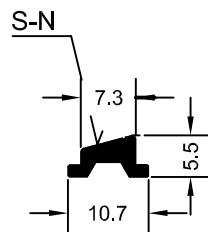
N-S: 2-pole magnetised surface, north-south

S-N: 2-pole magnetised surface, south-north

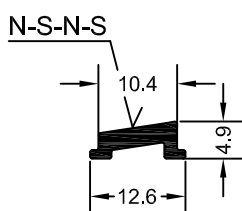
N-S-N-S: 4-pole magnetised surface, north-south-north-south



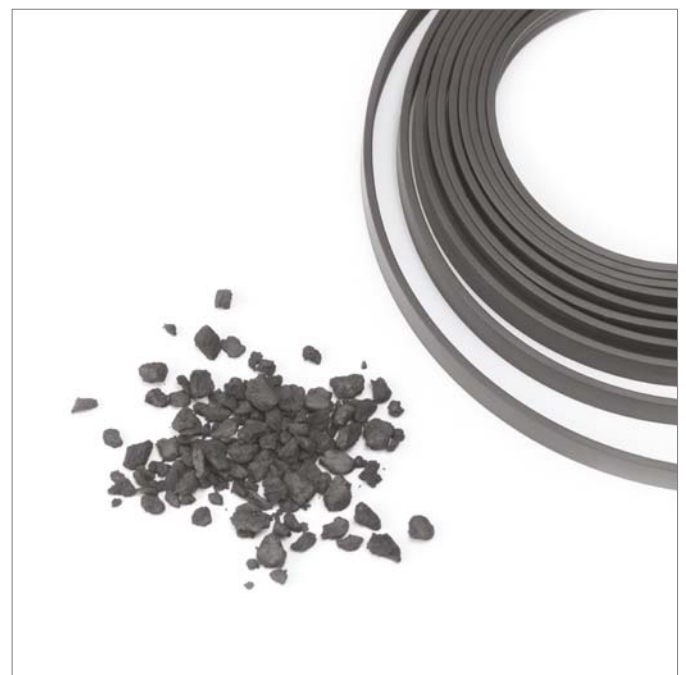
Mat. No. **1**611833
Magnetic strength 0.13 N/cm



Mat. No. **1**633265
Magnetic strength 0.13 N/cm



Mat. No. **1**618433
Magnetic strength 0.20 N/cm

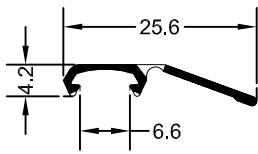


NB: The extended material number applies for all SAP countries: **1** = 1

2.7 Other profiles

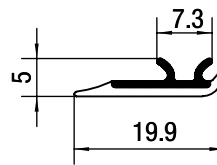
2.7.1 Strip seals in RAU-PVC

rigid/plasticised, transparent, with polyurethane hinge, for clipping onto aluminium profiles



Mat. No. **1**632783

rigid/plasticised and for insertion into aluminium profiles



Mat. No. **1**650117
rigid/plasticised, solid colour

2.7.2 Door seal profiles for insertion in aluminium strips

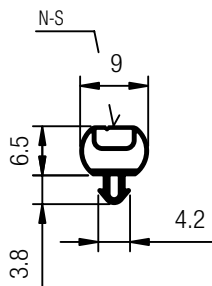
in RAU-PVC

Shore-A 75, transparent or opaque colours

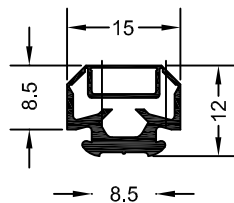
Shore-A 77; Opaque colours in conjunction with magnetic strips

in RAU-SIK

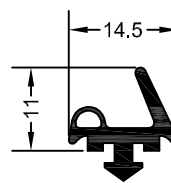
Shore-A 75; opaque colours



Mat. No. **1**650066
Magnetic strength 0.12 N/cm
N-S: 2-pole magnetised surface
north-south



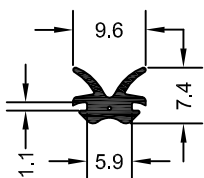
Mat. No. **1**608992
Magnet 2-polig
Mat. No. **1**629990
Magnetic strength 0.26 N/cm



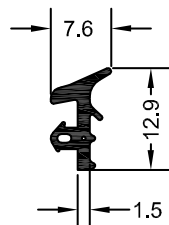
Mat. No. **1**835261

2.7.3 Wall seal profiles in RAU-SIK

transparent, Shore-A 60 (opaque colours upon request)



Mat. No. **1**834571

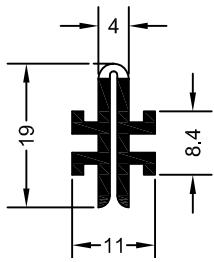


Mat. No. **1**834561

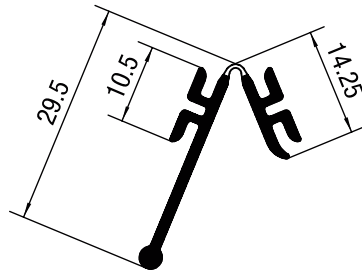
NB: The extended material number applies for all SAP countries: **1** = 1

2.7.4 Hinge profiles in RAU-PVC for insertion into aluminium profiles

opaque colours, plasticised part Shore-A 70



Mat. No. **1**633154

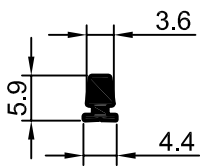


Mat. No. **1**650087

2.7.5 Shock damping profiles

in plasticised RAU-PVC

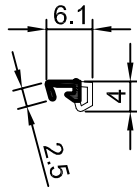
Shore-A 76;
transparent



Mat. No. **1**633845

in rigid/plasticised RAU-PVC

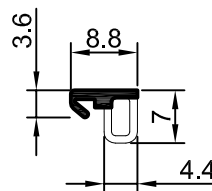
transparent,
plasticised part Shore-A 60



Mat. No. **1**636304

in rigid/plasticised RAU-SB/SRT

transparent,
plasticised part Shore-A 62

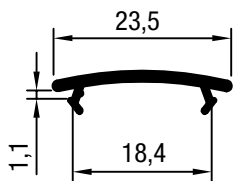


Mat. No. **1**650132

2.7.6 Cover profiles

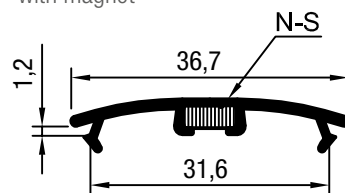
in rigid RAU-PVC

opaque colours



Mat. No. **1**636407

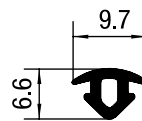
opaque colours
with magnet



Mat. No. **1**636397

in plasticised RAU-PVC

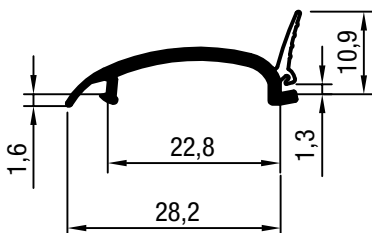
opaque colours



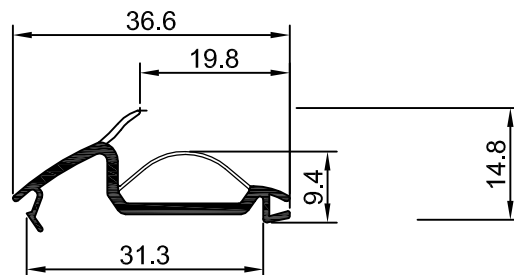
Mat. No. **1**625773

in rigid/plasticised RAU-PVC

opaque colours, plasticised part Shore-A 70



Mat. No. **1**633234



Mat. No. **1**650024

NB: The extended material number applies for all SAP countries: **1** = 1

3 LIST OF ARTICLES

Material No.	Page	Article description	Magnetic profiles	Sealing profiles		Sealing profiles			
			Magnetic strength	with overlap		for glass thicknesses			
			N/cm	5 mm	12 mm	Other	5 mm	6 mm	8 mm
1600064	18	Magnetic strip	0.18						
1600258	18	Magnetic strip	0.13						
1600269	18	Magnetic strip	0.24						
1600744	21	Stepped magnet	0.20						
1600784	15	Sealing profile			x				x
1601627	19	Magnetic strip with self-adhesive strip	0.18						
1601712	17	Glazing profile in RAU-PVC				x			
1602094	21	Stepped magnet	0.24						
1603414	20	Hat magnet	0.20						
1604943	18	Magnetic strip	0.09						
1604983	19	Magnetic strip with self-adhesive strip	0.09						
1606063	18	Magnetic strip	0.13						
1606663	20	Hat magnet	0.09						
1606983	19	Magnetic strip with self-adhesive strip	0.28						
1608992	22	Door seal profile							
1611833	21	Special magnetic profile	0.13						
1615003	17	Glazing profile in RAU-PVC				x			
1618214	20	Hat magnet	0.18						
1618433	21	Special magnetic profile	0.20						
1622082	18	Magnetic strip	0.14						
1625468	18	Magnetic strip	0.39						
1625773	23	Cover profile							
1625982	20	Hat magnet	0.13						
1626312	20	Hat magnet	0.15						
1626502	19	Magnetic strip with self-adhesive strip	0.06						
1626692	19	Magnetic strip with self-adhesive strip	0.09						
1626746	16	Encapsulated magnet	0.18						
1626834	19	Magnetic strip with self-adhesive strip	0.06						
1626883	15	Sealing profile			x			x	
1626892	20	Hat magnet	0.16						
1627136	19	Magnetic strip with self-adhesive strip	0.24						
1627552	19	Magnetic strip with self-adhesive strip	0.13						
1627852	21	Stepped magnet	0.16						
1628632	20	Hat magnet	0.10						
1629562	20	Hat magnet	0.18						
1629990	18/22	Magnetic strip	0.26						
1630452	20	Hat magnet	0.11						
1630472	20	T-magnet	0.09						
1631301	19	Magnetic strip with self-adhesive strip	0.51						
1632423	18	Magnetic strip	0.36						
1632576	14	Magnetic strip with self-adhesive strip				x	x	x	x
1632586	14	Sealing profile 2-2.5mm ESG			x	x			
1632783	22	Strip seal							
1632812	18	Magnetic strip	0.09						
1632816	16	Profile with magnetic inlay	0.18						
1632832	20	Hat magnet	0.12						
1632836	14	Sealing profile			x			x	x
1633154	23	Hinge profile							

NB: The extended material number applies for all SAP countries: **1** = 1

Material No.	Page	Article description	Magnetic profiles	Sealing profiles		Sealing profiles			
			Magnetic strength	with overlap		for glass thicknesses			
			N/cm	5 mm	12 mm	Other	5 mm	6 mm	8 mm
1633214	15	Sealing profile			X			X	
1633224	15	Sealing profile			X			X	
1633234	23	Cover profile							
1633265	21	Special magnetic profile	0.13						
1633845	23	Shock damping profile							
1633915	21	Stepped magnet	0.15						
1634083	20	Hat magnet	0.13						
1634093	20	Hat magnet	0.13						
1634403	21	Stepped magnet	0.16						
1636021	15	Sealing profile			X				X
1636114	21	Stepped magnet	0.17						
1636153	20	Hat magnet	0.12						
1636233	21	Stepped magnet	0.17						
1636304	23	Shock damping profile							
1636394	14	Sealing profile			X			X	X
1636397	23	Cover profile							
1636407	23	Cover profile							
1636967	19	Magnetic strip with self-adhesive strip	0.06						
1637545	21	Stepped magnet	0.26						
1637975	20	T-magnet	0.12						
1637978	16	Profile with magnetic inlay	0.24						
1637988	16	Profile with magnetic inlay	0.24						
1638423	18	Magnetic strip	0.13						
1639073	21	Stepped magnet	0.32						
1639384	14	Sealing profile		X			X		
1639385	15	Sealing profile		X				X	
1639422	20	Hat magnet	0.09						
1650004	18	Magnetic strip	0.12						
1650014	16	Profile with magnetic inlay	0.12						
1650021	17	Glazing profile in RAU-PE				X			
1650023	17	Glazing profile in RAU-PVC				X			
1650024	23	Cover profile							
1650039	16	Profile with magnetic inlay	0.13						
1650040	16	Profile with magnetic inlay	0.24						
1650048	14	Sealing profile		X				X	
1650066	22	Magnetic door seal	0.12						
1650080	15	Sealing profile		X				X	
1650081	16	Profile with magnetic inlay	0.25						
1650084	16	Profile with magnetic inlay	0.11						
1650087	23	Hinge profile							
1650117	22	Strip seal							
1650124	15	Sealing profile		X		X			
1650132	23	Shock damping profile							
1650193	19	Profile with magnetic inlay	0.24						
1650267	18	Magnetic strip	0.24						
1652121	10	135° magnetic door seal profile, N-S	0.18		X			X	X
1652131	10	135° magnetic door seal profile, S-N	0.18		X			X	X
1652202	10	Magnetic door seal profile, N-S	0.24		X			X	X
1652212	10	Magnetic door seal profile, S-N	0.24		X			X	X
1652222	10	45° magnetic door seal profile, N-S	0.18		X			X	X
1652232	10	45° magnetic door seal profile, S-N	0.18		X			X	X
1652242	10	180° magnetic door seal profile	0.18		X			X	X
1652252	10	Sealing profile	0.18		X			X	X

NB: The extended material number applies for all SAP countries: 1 = 1

Material No.	Page	Article description	Magnetic profiles	Sealing profiles		Sealing profiles			
			Magnetic strength	with overlap		for glass thicknesses			
			N/cm	5 mm	12 mm	Other	5 mm	6 mm	8 mm
1652300	10	Sealing profile			X			X	X
1652310	10	Sealing profile			X			X	X
1652320	10	Sealing profile			X			X	X
1652330	10	Sealing profile			X			X	X
1652340	10	Sealing profile			X			X	X
1652350	10	Sealing profile			X			X	X
1652360	10	Sealing profile			X			X	X
1652370	10	Sealing profile			X			X	X
1652380	11	Sealing profile			X			X	X
1652390	11	Sealing profile			X			X	X
1652400	11	Sealing profile			X			X	X
1652405	11	Sealing profile			X			X	X
1652415	11	Sealing profile			X			X	X
1652425	11	Sealing profile			X			X	X
1653020	7	Sealing profile		X					X
1653121	6	135° magnetic door seal profile, N-S	0.18	X					X
1653131	7	135° magnetic door seal profile, S-N	0.18	X					X
1653202	7	Magnetic door seal profile, N-S	0.24	X					X
1653212	7	Magnetic door seal profile, S-N	0.24	X					X
1653222	6	45° magnetic door seal profile, N-S	0.18	X					X
1653232	6	45° magnetic door seal profile, S-N	0.18	X					X
1653242	6	180° magnetic door seal profile	0.18	X					X
1653300	7	Sealing profile		X					X
1653310	7	Sealing profile		X					X
1653320	7	Sealing profile		X					X
1653330	7	Sealing profile		X					X
1653340	7	Sealing profile		X					X
1653350	7	Sealing profile		X					X
1653360	7	Sealing profile		X					X
1653370	7	Sealing profile		X					X
1653380	7	Sealing profile		X					X
1653390	7	Sealing profile		X					X
1653400	7	Sealing profile		X					X
1653405	7	Sealing profile		X					X
1653415	7	Sealing profile		X					X
1654720	8	Sealing profile			X	X	X		
1655222	5	45° magnetic door seal profile, N-S	0.18	X			X		
1655232	5	45° magnetic door seal profile, S-N	0.18	X			X		
1655242	5	180° magnetic door seal profile	0.18	X			X		
1655345	5	Sealing profile		X			X		
1655705	5	Sealing profile		X			X		
1655715	5	Sealing profile		X			X		
1655725	5	Sealing profile		X			X		
1655735	5	Sealing profile		X			X		
1655745	5	Sealing profile		X			X		
1655755	5	Sealing profile		X			X		
1655785	5	Sealing profile		X			X		
1655795	5	Sealing profile		X			X		
1656222	6	45° magnetic door seal profile, N-S	0.18	X				X	
1656232	6	45° magnetic door seal profile, S-N	0.18	X				X	
1656242	6	180° magnetic door seal profile	0.18	X				X	
1656345	6	Sealing profile		X				X	
1656705	6	Sealing profile		X				X	

NB: The extended material number applies for all SAP countries: 1 = 1

Material No.	Page	Article description	Magnetic profiles	Sealing profiles		Sealing profiles			
			Magnetic strength	with overlap		for glass thicknesses			
			N/cm	5 mm	12 mm	Other	5 mm	6 mm	8 mm
1656715	6	Sealing profile		X				X	
1656725	6	Sealing profile		X				X	
1656735	6	Sealing profile		X				X	
1656745	6	Sealing profile		X				X	
1656755	6	Sealing profile		X				X	
1656785	6	Sealing profile		X				X	
1656795	6	Sealing profile		X				X	
1660222	12	Door seal profile 45° N-S	0.24		X	X			
1660232	12	Door seal profile 45° S-N	0.24		X	X			
1660242	12	Door seal profile 180°	0.24		X	X			
1660305	12	Sealing profile			X	X			
1660315	12	Sealing profile			X	X			
1660325	12	Sealing profile			X	X			
1662222	13	Door seal profile	0.18		X			X	X
1662232	13	Door seal profile	0.18		X			X	X
1662242	13	Door seal profile	0.18		X			X	X
1662305	13	Sealing profile			X			X	X
1663222	13	Door seal profile	0.18	X					X
1663232	13	Door seal profile	0.18	X					X
1663242	13	Door seal profile	0.18	X					X
1663415	13	Sealing profile		X					X
1665121	8	Door seal profile	0.18		X		X		
1665131	8	Door seal profile	0.18		X		X		
1665202	8	Door seal profile	0.24		X		X		
1665212	8	Door seal profile	0.24		X		X		
1665222	8	Door seal profile	0.18		X		X		
1665232	8	Door seal profile	0.18		X		X		
1665242	8	Door seal profile	0.18		X		X		
1665252	8	Door seal profile	0.18		X		X		
1665301	8	Sealing profile			X		X		
1665311	9	Sealing profile			X		X		
1665321	9	Sealing profile			X		X		
1665331	9	Sealing profile			X		X		
1665341	9	Sealing profile			X		X		
1665351	9	Sealing profile			X		X		
1665361	9	Sealing profile			X		X		
1665371	9	Sealing profile			X		X		
1665381	9	Sealing profile			X		X		
1665391	9	Sealing profile			X		X		
1665401	9	Sealing profile			X		X		
1665405	9	Sealing profile			X		X		
1665415	9	Sealing profile			X		X		
1665425	9	Sealing profile			X		X		
1834561	22	Silicone profile RAU-SIK							
1834571	22	Silicone profile RAU-SIK							
1834681	17	Silicone glazing profile RAU-SIK							
1835261	22	Door seal profile RAU-SIK							
1835721	17	Silicone glazing profile RAU-SIK							
1835801	17	Silicone glazing profile RAU-SIK							
1835821	17	Silicone glazing profile RAU-SIK							

NB: The extended material number applies for all SAP countries: 1 = 1

This document is protected by copyright. All rights based on this are reserved. No part of this publication may be translated, reproduced or transmitted in any form or by any similar means, electronic or mechanical, photocopying, recording or otherwise, or stored in a data retrieval system.

Our verbal and written advice relating to technical applications is based on experience and is to the best of our knowledge correct but is given without obligation.

The use of REHAU products in conditions that are beyond our control or for applications other than those specified releases us from any obligation in regard to claims made in respect of the products.

We recommend that the suitability of any REHAU product for the intended application should be checked. Utilization and processing of our products are beyond our control and are therefore exclusively your responsibility. In the event that a liability is nevertheless considered, any compensation will be limited to the value of the goods supplied by us and used by you.

Our warranty assumes consistent quality of our products in accordance with our specification and in accordance with our general conditions of sale.

REHAU SALES OFFICES

AE: Middle East, Phone: +9714 8835677, dubai@rehaus.com **AR: Buenos Aires**, Phone: +54 11 489860-00, buenosaires@rehaus.com **AT: Linz**, Phone: +43 732 381610-0, linz@rehaus.com **Vienna**, Phone: +43 2236 24684, wien@rehaus.com **AU: Adelaide**, Phone: +61 8 82990031, adelaide@rehaus.com **Brisbane**, Phone: +61 7 55271833, brisbane@rehaus.com **Melbourne**, Phone: +61 3 95875544, melbourne@rehaus.com **Perth**, Phone: +61 8 94564311, perth@rehaus.com **Sydney**, Phone: +61 2 87414500, sydney@rehaus.com **BA: Sarajevo**, Phone: +387 33 475-500, sarajevo@rehaus.com **BE: Brussels**, Phone: +32 16 3999-11, bruxelles@rehaus.com **BG: Sofia**, Phone: +359 2 89204-71, sofia@rehaus.com **BR: Arapongas**, Phone: +55 43 3152 2004, arapongas@rehaus.com **Belo Horizonte**, Phone: +55 31 33097737, belo Horizonte@rehaus.com **Caxias do Sul**, Phone: +55 54 32146606, caxias@rehaus.com **Mirassol**, Phone: +55 17 32535190, mirassol@rehaus.com **Recife**, 51030-320 Bairro-Boa viagem-Recife-PE, Phone: +55 81 32028100 Sao Paulo, Phone: +55 11 461339-22, saopaulo@rehaus.com **BY: Minsk**, Phone: +375 17 2450209, minsk@rehaus.com **CA: Moncton**, Phone: +1 506 5382346, moncton@rehaus.com **Montreal**, Phone: +1 514 9050345, montreal@rehaus.com **St. John's**, Phone: +1 709 7473909, stjohns@rehaus.com **Toronto**, Phone: +1 905 3353284, toronto@rehaus.com **Vancouver**, Phone: +1 604 6264666, vancouver@rehaus.com **CH: Berne**, Phone: +41 31 7202-120, bern@rehaus.com **Vevey**, Phone: +41 21 94826-36, vevey@rehaus.com **Zurich**, Phone: +41 44 83979-79, zuerich@rehaus.com **CL: Santiago**, Phone: +56 2 540-1900, santiago@rehaus.com **CN: Guangzhou**, Phone: +86 20 87760343, guangzhou@rehaus.com **Beijing**, Phone: +86 10 64282956, beijing@rehaus.com **Shanghai**, Phone: +86 21 63551155, shanghai@rehaus.com **CO: Bogota**, Phone: +57 1 2637768, bogota@rehaus.com **CZ: Prague**, Phone: +420 2 72190-111, praha@rehaus.com **DE: Berlin**, Phone: +49 30 66766-0, berlin@rehaus.com **Bielefeld**, Phone: +49 521 20840-0, bielefeld@rehaus.com **Bochum**, Phone: +49 234 68903-0, bochum@rehaus.com **Frankfurt**, Phone: +49 6074 4090-0, frankfurt@rehaus.com **Hamburg**, Phone: +49 40 733402-100, hamburg@rehaus.com **Leipzig**, Phone: +49 34292 82-0, leipzig@rehaus.com **Munich**, Phone: +49 8102 86-0, muenchen@rehaus.com **Nuremberg**, Phone: +49 9131 93408-0, nuernberg@rehaus.com **Stuttgart**, Phone: +49 7159 1601-0, stuttgart@rehaus.com **DK: Copenhagen**, Phone: +45 46 7737-00, kopenhagen@rehaus.com **EE: Tallinn**, Phone: +372 6 0258-50, tallinn@rehaus.com **ES: Barcelona**, Phone: +34 93 6353-500, barcelona@rehaus.com **Bilbao**, Phone: +34 94 45386-36, bilbao@rehaus.com **Madrid**, Phone: +34 91 6839425, madrid@rehaus.com **FI: Helsinki**, Phone: +358 9 877099-00, helsinki@rehaus.com **FR: Agen**, Phone: +33 5536958-69, agen@rehaus.com **Lyon**, Phone: +33 472026-300, lyon@rehaus.com **Metz**, Phone: +33 3870585-00, metz@rehaus.com **Paris**, Phone: +33 1 348364-50, paris@rehaus.com **Rennes**, Phone: +33 2 996521-30, rennes@rehaus.com **GE: Tiflis**, Phone: +995 32 559909, tbilisi@rehaus.com **GB: Glasgow**, Phone: +44 1698 50 3700, glasgow@rehaus.com **Manchester**, Phone: +44 161 7777-400, manchester@rehaus.com **Slough**, Phone: +44 1753 5885-00, slough@rehaus.com **GR: Athens**, Phone: +30 210 6682-500, athens@rehaus.com **HR: Zagreb**, Phone: +385 1 3444-711, zagreb@rehaus.com **HU: Budapest**, Phone: +36 23 5307-00, budapest@rehaus.com **ID: Jakarta**, Phone: +62 21 45871030, jakarta@rehaus.com **IE: Dublin**, Phone: +353 1 816502-0, dublin@rehaus.com **IN: New Delhi**, Phone: +91 11 450 44700, newdelhi@rehaus.com **Mumbai**, Phone: +91 22 67922929, mumbai@rehaus.com **IT: Milan**, Phone: +39 02 95941-1, milano@rehaus.com **Pesaro**, Phone: +39 0721 2006-11, pesaro@rehaus.com **Rome**, Phone: +39 06 900613-11, roma@rehaus.com **Treviso**, Phone: +39 0422 7265-11, treviso@rehaus.com **KZ: Almaty**, Phone: +7 727 394 1304, almaty@rehaus.com **LT: Vilnius**, Phone: +3 705 24614-00, vilnius@rehaus.com **LV: Riga**, Phone: +3 71 67 609080, riga@rehaus.com **MA: Casablanca**, Phone: +212 522 250593, casablanca@rehaus.com **MK: Skopje**, Phone: +3 892 2402-670, skopje@rehaus.com **MX: Celaya**, Phone: +52 461 61880-00, celaya@rehaus.com **Monterrey**, Phone: +52 81 81210-130, monterrey@rehaus.com **NL: Nijkerk**, Phone: +31 33 24799-11, nijkerk@rehaus.com **NO: Oslo**, Phone: +47 22 5141-50, oslo@rehaus.com **NZ: Auckland**, Phone: +64 9 2722264, auckland@rehaus.com **PE: Lima**, Phone: +51 1 2261713, lima@rehaus.com **PL: Katowice**, Phone: +48 32 7755-100, katowice@rehaus.com **Poznań**, Phone: +48 61 849-8400, poznan@rehaus.com **Warsaw**, Phone: +48 22 2056-300, warszawa@rehaus.com **PO: Lisbon**, Phone: +3 51 21 94972-20, lisboa@rehaus.com **RO: Bacau**, Phone: +40 234 512066, bacau@rehaus.com **Bucharest**, Phone: +40 21 2665180, bucuresti@rehaus.com **Cluj**, Phone: +40 264 415211, clujnapoca@rehaus.com **RU: Chabarowsk**, Phone: +7 4212 411218, chabarowsk@rehaus.com **Yekaterinburg**, Phone: +7 343 2535305, yekaterinburg@rehaus.com **Krasnodar**, Phone: +7 861 2103636, krasnodar@rehaus.com **Moscow**, Phone: +7 495 6632060, moscow@rehaus.com **Nizhny Novgorod**, Phone: +7 813 786927, nishnijnovgorod@rehaus.com **Novosibirsk**, Phone: +7 383 2000353, novosibirsk@rehaus.com **Rostov-on-Don**, Phone: +7 8632 978444, rostow@rehaus.com **Samara**, Phone: +7 8462 698058, samara@rehaus.com **St. Petersburg**, Phone: +7 812 3266207, spetersburg@rehaus.com **RS: Belgrade**, Phone: +3 81 11 3770-301, beograd@rehaus.com **SE: Örebro**, Phone: +46 19 2064-00, oerebro@rehaus.com **SG: Singapore**, Phone: +65 63926006, singapore@rehaus.com **SK: Bratislava**, Phone: +4 21 2 682091-10, bratislava@rehaus.com **TH: Bangkok**, Phone: +66 2 7443155, bangkok@rehaus.com **TR: Istanbul**, Phone: +90 212 35547-00, istanbul@rehaus.com **TW: Taipei**, Phone: +886 2 87803899, taipei@rehaus.com **UA: Dnepropetrovsk**, Phone: +380 56 3705028, dnepropetrovsk@rehaus.com **Kiev**, Phone: +380 44 4677710, kiev@rehaus.com **Lviv**, Phone: +380 32 2244810, lviv@rehaus.com **Odessa**, Phone: +380 48 7800708, odessa@rehaus.com **US: Detroit**, Phone: +1 248 8489100, detroit@rehaus.com **Grand Rapids**, Phone: +1 616 2856867, grandrapids@rehaus.com **Los Angeles**, Phone: +1 951 5499017, losangeles@rehaus.com **Minneapolis**, Phone: +1 612 253 0576, minneapolis@rehaus.com **ZA: Durban**, Phone: +27 31 657447, durban@rehaus.com **Johannesburg**, Phone: +27 11 201-1300, johannesburg@rehaus.com. If there is no sales office in your country please contact: REHAU AG + Co, Sales Office International Business Development, Ytterbium 4, D-91058 Erlangen, Phone: +49 9131 92-5888, salesoffice.ibd@rehaus.com