

**CONTEMPORARY DESIGN, THERMAL
EFFICIENCY AND DURABILITY**

From the AGILA Passivhaus Entrance Door



STYLISH AND SECURE

AGILA Passivhaus Entrance Door

REHAU and Rodenberg Door panels have joined forces to offer the U.K. market a fully certified Passivhaus Door solution. The complete door solution is fabricated and distributed from the U.K.

Combining ultimate thermal performance, high security, soundproofing and aesthetics, REHAU and Rodenberg have created the perfect door solution.

The AGILA Passivhaus door has been designed with thermal efficiency in mind, and has been certified by the Passivhaus Institute, obtaining the highest thermal performance standard in the world. With overall Ud values of 0.7 W/m²K achievable, these doors will certainly keep the heat in during the winter and out during the summer, helping to reduce heating bills and CO₂ emissions.



Creating individuality.

The Passivhaus door is available in GRP foil laminate finish or aluminium overlay skin in any standard RAL colour (Polyester Powder Coating).

These thermally efficient doors come in a wide range of highly stylish options, from sleek and modern to a more traditional style, individuality now comes as 'standard'.

With an option to have concealed hinges giving a clean line both internally and externally the hinge will never clash with internal plaster lines. Brighten up dark winter nights with a finishing touch of LED lights in the door for that really special look, all with a choice of Aluminium or glass reinforced plastic (GRP) overlay skins for a beautifully sleek finish.



Solid and secure.

The doorsets are designed to be compatible with a wide range of hardware, so you can adorn your beautiful, premium doors with furniture of your liking. Glazing options range from a modern sandblasted look through to the more traditional look of 'leaded' and coloured glass to suit individual tastes.

The doorsets have been rigorously tested for weather performance and have achieved excellent results. As you would expect the doors have been designed to be robust with that 'extra solid' feel to give you the feeling of extra security in the home.

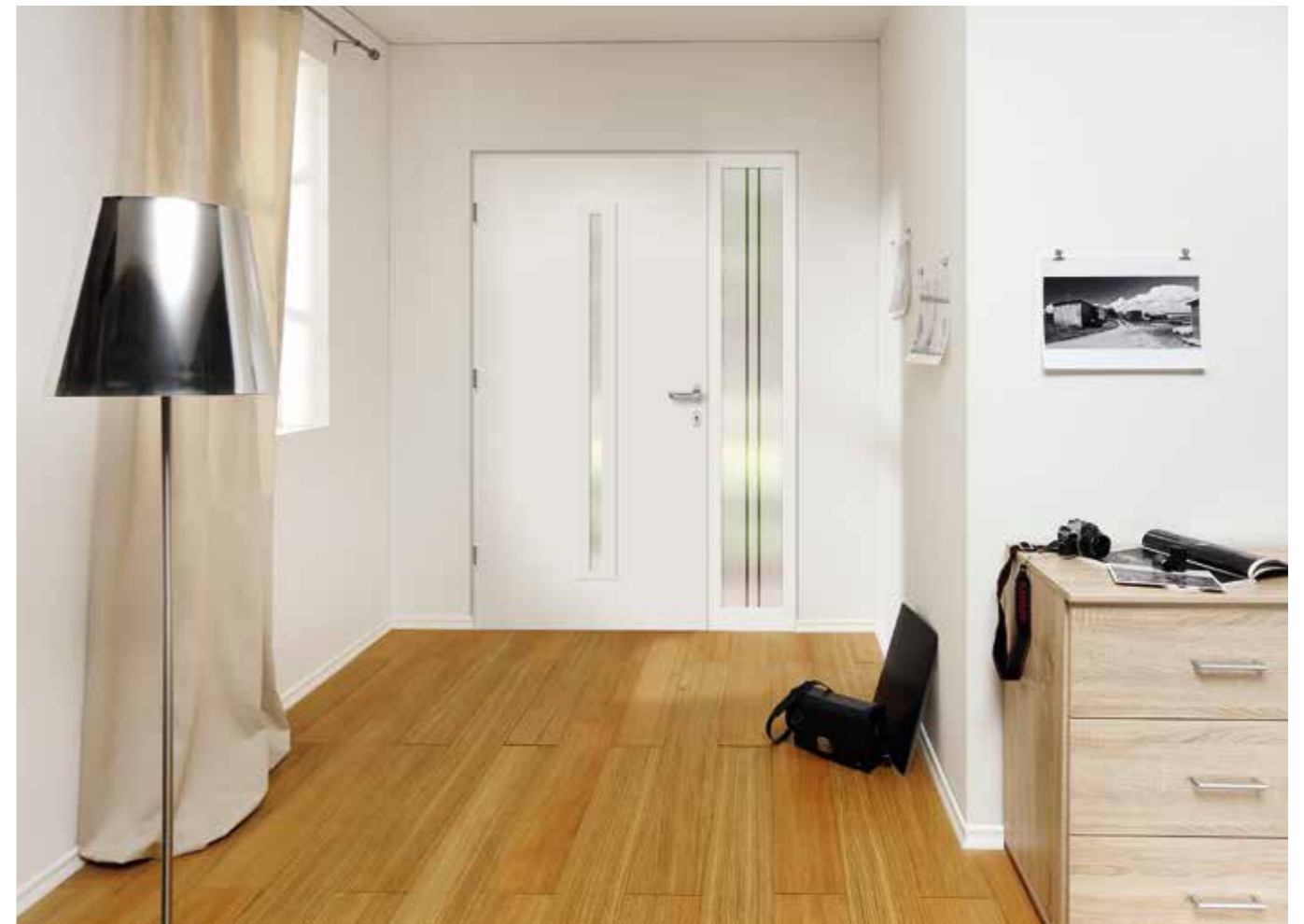
GENEO® RAU-FIPRO®.

Built to last, these doors are low maintenance, easy to clean and have a long life expectancy. Using REHAU's well established GENEO® Profile, each door benefits from the technology used in RAU-FIPRO® – a high performance material based on fibre composites used in aircraft construction. RAU-FIPRO® delivers high stability, torsional stiffness and static properties with reduced steel reinforcement requirements, helping to significantly improve overall energy efficiency.



A complete Passivhaus solution.

The AGILA door range can be used as part of a total Passivhaus fenestration solution due to its compatibility with other REHAU Passivhaus products; such as Polytec 50 Aluminium Clad Curtain Walling and GENEO® Windows.



REHAU Window Solutions.

REHAU is one of the world's leading polymer producers – developing innovative, efficient and high quality solutions in polymer which meet the demands of today's construction and industrial markets. A global company with huge resources invested in product development and application, REHAU has built its considerable reputation on delivering products and systems which exploit the inherent benefits of polymer and offer environmentally efficient, high performing alternatives to traditional materials.

In the UK, REHAU has a large headquarters with dedicated technical and product development teams, two large scale polymer extrusion plants and a network of regional sales offices and commercial specialists providing advice and support to developers, specifiers, and contractors.

In the construction market, our product range includes market leading PVCu windows and doors, an aluminium clad curtain walling system, renewable energy products, cable management systems and highly specialised pipework and fittings for plumbing and underfloor heating, district heating and ground source energy applications.

We work across the civil engineering, commercial development, private and social housing sectors and focus on working in partnership with our clients to help them maximise the benefits of our products and systems.

GRM Windows and GRM Innovations.

REHAU have partnered with GRM Windows, a long standing REHAU fabricator for over 25 years, to produce this impressive product. With this strong unity our installers can be sure they are delivering their customers true home security.

GRM Windows has been established for more than 35 years and has built a deserved reputation of the quality of its products and the expert technical advice it delivers to its customers, particularly in the design and fabrication of bespoke product solutions.

GRM Innovations specialises in the fabrication of high-end, thermally efficient fenestration solutions.







AGILA PASSIVHAUS ENTRANCE DOOR

Door Styles



Model 6872-93

Four horizontal tongue and groove panels

Featured Design

Handle	Stainless steel/walnut 1600mm 1073-13
--------	--

Base Plate	Flush stainless steel SB700-3
------------	----------------------------------

Visit www.REHAU.uk/Passivhaus-Door to view the full range of colours and styles available.



Model 6861-92

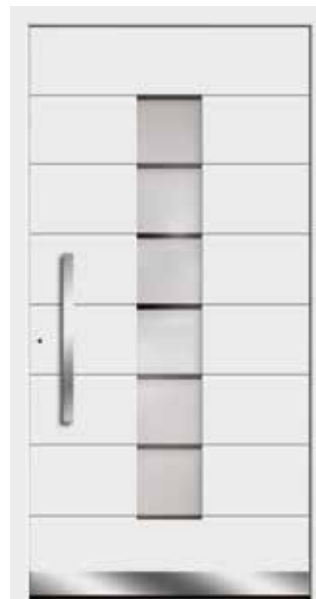
Five horizontal tongue and groove panels

Featured Design

Handle	Stainless steel/walnut 1600mm 1073-13
--------	--

Base Plate	Flush stainless steel SB700-3
------------	----------------------------------

Visit www.REHAU.uk/Passivhaus-Door to view the full range of colours and styles available.



Model 6559-52

Eight horizontal tongue and groove panels

Featured Design

Glazing	Six matte glass squares with clear strips
Handle	Curved stainless steel 600mm 1039-13
Base Plate	Flush stainless steel SB700-3

Visit www.REHAU.uk/Passivhaus-Door to view the full range of colours and styles available.



Model 6438-57

Curved matte glass within integrated steel arc

Featured Design

Glazing	Curved matte glass integrated within steel arc and ornamental red glass (RAL 3004)
Handle	Curved stainless steel V78

Visit www.REHAU.uk/Passivhaus-Door to view the full range of colours and styles available.



Model 6864-53

One slim, vertical matte glass strip

Featured Design

Glazing	Slim, vertical matte glass strip
Handle	Stainless steel 500mm V105

Visit www.REHAU.uk/Passivhaus-Door to view the full range of colours and styles available.



Model 6497-90

Square cut out detailing

Featured Design

Colour	Anthracite grey RAL 7016
Handle	Indented brushed steel 430mm V103 (LED optional)
Base Plate	Stainless steel with square cut out detailing 100mm SB710-7

Visit www.REHAU.uk/Passivhaus-Door to view the full range of colours and styles available.



Model 6409-57

Single vertical glass strip with steel panels top and bottom

Featured Design

Colour	Anthracite grey <i>RAL 7016</i>
Glazing	Cannes white ornamental glass complimented with steel panel at the top and bottom
Handle	Stainless steel/wood 1600mm <i>1071-13</i>

Visit www.REHAU.uk/Passivhaus-Door to view the full range of colours and styles available.



Model 6860-92

Four horizontal tongue and groove panels

Featured Design

Colour	Siena noce
Handle	Stainless steel 500mm <i>V 105</i>
Base Plate	Flush stainless steel <i>SB700-3</i>

Visit www.REHAU.uk/Passivhaus-Door to view the full range of colours and styles available.



Model 6508-70

Single vertical glass strip

Featured Design

Colour	Blue grey <i>RAL 7031</i>
Glazing	Matte glass within stainless steel frame
Handle	Stainless steel 1600mm <i>1044-13</i>
Base Plate	Flush stainless steel <i>SB700-3</i>

Visit www.REHAU.uk/Passivhaus-Door to view the full range of colours and styles available.



Model 6878-53

Five horizontal tongue and groove panels

Featured Design

Colour	Siena noce
Glazing	Three integrated matte glass panels
Handle	Stainless steel 1400mm <i>9027-13</i>
Base Plate	Flush stainless steel <i>SB700-3</i>

Visit www.REHAU.uk/Passivhaus-Door to view the full range of colours and styles available.

Get in touch...

For further information

visit www.REHAU.uk/Passivhaus-Door

email PassivhausDoor@REHAU.com

UK & IRELAND SALES OFFICES

London, The REHAU Hub, The Building Centre, 26 Store Street, London WC1E 7BT Phone: 0207 580 6155 Fax: 0207 307 8595

Slough, Units 5 J & K, Langley Business Centre, Station Road, Langley, Slough SL3 8DS Phone: 01753 588500 Fax: 01753 588501

Manchester, Brinell Drive, Irlam, Manchester M44 5BL Phone: 0161 777 7400 Fax: 0161 777 7401

Glasgow, Phoenix House, Phoenix Crescent, Strathclyde Business Park, Bellshill, North Lanarkshire ML4 3NJ Phone: 01698 503700 Fax: 01698 503701

Dublin, 9 St. Johns Court, Business Park, Swords Road, Santry, Dublin 9 Phone: 00353 (0)1 8165020 Fax: 00353 (0)1 8165021



Follow
[@REHAUWindows](https://twitter.com/REHAUWindows)



Watch
[REHAU Ltd](https://www.youtube.com/REHAU)



Like
[REHAU Windows](https://www.facebook.com/REHAUWindows)



Look
[REHAU Windows UK](https://www.pinterest.com/REHAUWindowsUK)



Connect
[REHAU UK Ltd](https://www.linkedin.com/company/REHAU-UK-Ltd)

Our verbal and written application engineering advice is based upon experience and the best of our knowledge. However, it is to be regarded as non-binding information. Working conditions and use under conditions for which the product was not intended and over which we have no influence exclude any claim resulting from our information. We recommend that a check is made as to whether the REHAU product is suitable for the envisaged purpose. Application, use and processing of the products is carried out beyond the scope of our control and are therefore carried out exclusively at your own responsibility. If liability should still apply, then this is restricted, in the case of all damage, the value of the goods supplied by us and used by you. Our warranty applies to the consistent quality of our products as per our specification and in accordance with our general terms and conditions of delivery and payment. This document is protected by copyright. All rights based on this are reserved. No part of this publication may be translated, reproduced or transmitted in any form or by any similar means, electronic or mechanical, photocopying, recording or otherwise, or stored in a data retrieval system.



PASSIVHAUS



Mixed Sources
Product group from well-managed forests, and other controlled sources
www.fsc.org Cert no. TT-COC-002444
© 1996 Forest Stewardship Council