

# TECHNICAL BULLETIN TB245

## INSTRUCTIONS FOR INSTALLING THE BULK HEAD SEAL FOR RAUGEO PIPES

**Product:** RAUGEO Bulk Head Seal  
**Date:** 16 Jan 12 (supersedes 13 Apr 10)

### 1. RAUGEO Bulk Head Seal

Pipe entering the house through the wall should be insulated against condensation. The RAUGEO bulk head seal consists of a wall sealing flange which will not only prevent moisture from entering the house, but will also withstand the force of pressurized water. A rubber EPDM seal (Shore 40° ± 5°) and a sealing plate with stainless steel screws are included.

**NOTICE:** The RAUGEO seal insert is not adequate as an anchor and acts exclusively as an elastic seal for pipes. Slight, axial agitation is tolerable.

### 2. Concept

To seal the pipe flush at the outer wall, the pipe passing through the conduit is insulated, thereby providing a vapor seal. The pipe is laid through the conduit. The wall sealing flange must be tightened to the appropriate torque (see Table 1). The insulation is then pushed from the inside over the pipe toward the wall flange. The end of the insulation is adhered to the wall sealing flange (see Fig. 1).

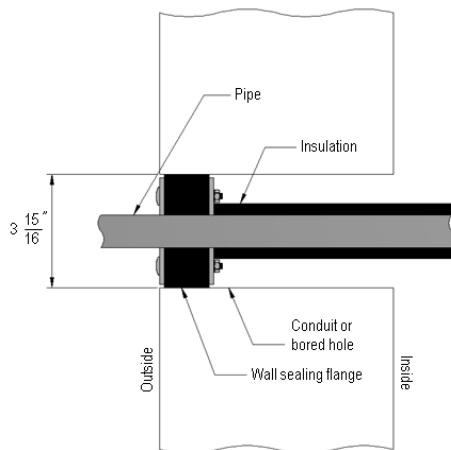


Fig. 1: Entry to building

### 3. Installation

#### 3.1 Protection of the Bore Hole with Epoxy Resin

Apply a layer of epoxy resin to the bore hole to compensate for fissures and recesses.

#### 3.2 Assembly Preparation

Clean the opening, or conduit pipe if used, as well as the RAUGEO pipes with a clean cloth before using.

#### 3.3 Assembly

Insert the seal together with the RAUGEO pipe into the opening. The screws of the bulk head seal must be accessible to allow retightening later.

For updates to this publication, visit [na.rehau.com/resourcecenter](http://na.rehau.com/resourcecenter)

The information contained herein is believed to be reliable, but no representations, guarantees or warranties of any kind are made as to its accuracy, suitability for particular applications or the results to be obtained therefrom. Before using, the user will determine suitability of the information for user's intended use and shall assume all risk and liability in connection therewith.

© 2010 REHAU

### 3.4 Retightening

Working in a crisscross pattern, retighten each screw at least 3 times. Wait 2 hours and retighten again.

### 3.5 Monitoring

Torque the seal insert screws based on the values in Table 1. The rubber ring should expand evenly around the flange disc as the screws are tightened.

**Table 1: Torque**

Maximum Torque	Screw	Wrench Size
5 Nm	M 6	10 mm
10 Nm	M 8	13 mm
15 Nm	M 10	17 mm