




OUTDOOR WOOD BOILER PIPE

PRODUCT INSTRUCTIONS

Table of Contents

1. Scope	3
2. Installation Overview	3
3. Understanding Outdoor Wood Boiler (OWB) Pipe	4
4. Designing OWB Pipe Systems	8
5. Handling OWB Pipe	11
6. Preparing the Trench	11
7. Placing the OWB Pipe	13
8. Making Connections	13
9. Penetrating the Building Wall	17
10. Testing the System	19
11. Backfilling the Trench	20

 This symbol and the signal words DANGER, WARNING or CAUTION alert you to personal injury hazards. If you don't avoid the hazardous situation:

- DANGER! Will result in death or serious injury
- WARNING! Could result in death or serious injury
- CAUTION! Can result in minor or moderate injury

The signal word NOTICE is used to help you avoid property damage.
We cannot warn of all hazards; you must also use your own good judgement.

For updates to this publication and the most current technical instructions, safety information and manufacturer's recommendations, visit na.rehau.com/resourcecenter

1. SCOPE

This technical information applies to the planning, installation and connection of REHAU outdoor wood boiler (OWB) insulated crosslinked polyethylene (PEXa) pipe in buried outdoor wood boiler energy transfer systems.

This guide gives direction to appropriately licensed installers who have a working knowledge of applicable federal, state, provincial and local regulations. Persons using this guide must have an understanding of the principles and practices for design and installation of buried insulated energy transfer piping systems and outdoor wood boilers. It is the responsibility of the designer and installer to check the prevailing local codes and to verify that the technical information presented in this guide is appropriate for a particular installation.

This guide should be used in conjunction with the REHAU PEXa Piping Systems Pressure Loss Tables. The designer should also review the REHAU PEXa Limited Warranty and pertinent supplemental REHAU Technical Bulletins before beginning to design an energy transfer system.

2. INSTALLATION OVERVIEW

Figure 1 highlights the most critical points in a REHAU OWB pipe installation:

- 1** Surround OWB pipe by at least 4 in (10 cm) of sand (Chapter 6).
- 2** Protect OWB pipe from direct exposure to UV radiation (Chapter 5).
- 3** Lay OWB pipe below the frost line to prevent movement (Chapter 6).
- 4** Install proper wall penetration solution to avoid leakage (Chapter 9).
- 5** Anchor the connections that will receive the OWB fittings at each end (Chapter 8). Do not anchor the OWB outer casing, sleeve of F2080/SDR11 sleeve or nut of compression nut fitting.
- 6** Pressure test system before backfilling the trench. Perform the test using a glycol solution or air if there is any chance water could freeze in the system (Chapter 10).

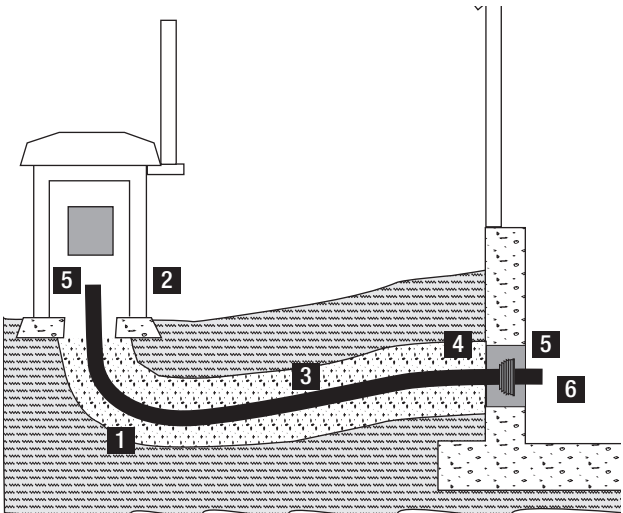


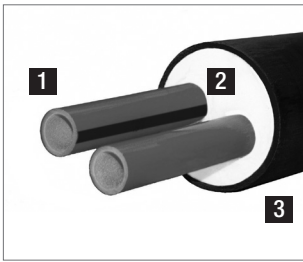
Fig 1: Outdoor wood boiler (OWB) pipe installation

3. UNDERSTANDING OUTDOOR WOOD BOILER (OWB) PIPE

Outdoor wood boiler (OWB) pipe is specially designed for the efficient transfer of hot water from outdoor wood boilers to residential and light commercial buildings. A flexible alternative to rigid pipe, OWB pipe offers ease of installation combined with the long-term performance of REHAU RAUPEX® and RAUTHERM™ PEXa pipe for hydronic heating applications.

3.1 OWB Pipe Composition

OWB pipe consists of two carrier pipes surrounded by a solid layer of polyurethane foam insulation and protected by a polyethylene casing. The two-pipe configuration combines supply and return pipes, streamlining installation. One of the PEXa carrier pipes is marked with a black line to differentiate supply from return.



- 1 Carrier pipes** – transfer hot water through PEXa supply and return lines
- 2 Polyurethane foam** – insulates carrier pipes
- 3 Polyethylene casing** – protects insulation and carrier pipes

Fig. 2: OWB pipe composition

OWB pipes are available with 1 in., 1 1/4 in. or 32 mm PEXa carrier pipes and are coiled for shipment.

Table 1: OWB Pipe Sizes

Nominal Size	Article Number	Casing Outer Diameter in (mm)	Weight lb/ft (kg/m)
Two-pipe system with ASTM-sized RAUPEX SDR9 Carrier Pipes			
1 + 1 in.	298406	4.375 (111)	1.18 (1.76)
1 1/4 + 1 1/4 in.	298416	4.375 (111)	1.37 (2.04)
Two-pipe system with Metric-sized RAUTHERM SDR11 Carrier Pipes			
32 + 32 mm	730033	4.375 (111)	1.26 (1.86)

3.2 PEXa Carrier Pipes

RAUPEX and RAUTHERM crosslinked polyethylene (PEXa) pipes are manufactured using REHAU's high-pressure peroxide extrusion method that typically yields the highest, most consistent level of crosslinking. Pioneered by REHAU in 1968, PEXa technology enhances flexibility and thermal memory, providing ease of handling and kink repair while supporting the use of F2080/SDR11 compression-sleeve fittings.

Oxygen Diffusion Barrier

The carrier pipes in REHAU OWB pipe are RAUPEX O₂ Barrier and RAUTHERM FW, produced with an oxygen diffusion barrier that limits oxygen permeation through the pipe wall in accordance with DIN 4726. This pipe is suitable for many types of hydronic heating systems including systems with ferrous (iron or steel) components. Polymer pipes that do not have an O₂ barrier can allow oxygen to pass through the pipe wall and dissolve in the heating water which may corrode any iron or steel components such as pipes, valves, pumps and the boiler.

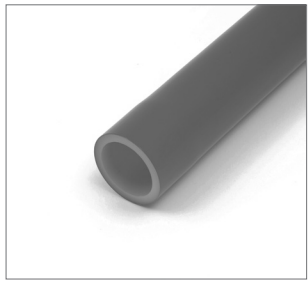


Fig. 3: RAUPEX carrier pipes

Long-term Strength

The following pressure and temperature limits apply to OWB pipe with RAUPEX ASTM-sized carrier pipe for conveying energy heating and cooling water at operating temperatures with a 2.0 safety factor on allowable working pressure.

- 160 psi @ 73.4°F (1055 kPa @ 23°C)
- 100 psi @ 180°F (690 kPa @ 82.2°C)

The following pressure and temperature limits apply to OWB pipe with RAUTHERM metric-sized carrier pipe for conveying energy heating and cooling water at operating temperatures with a 2.0 safety factor on allowable working pressure.

- 125 psi @ 73.4°F (860 kPa @ 23°C)
- 80 psi @ 180°F (550 kPa @ 82.2°C)

RAUPEX and RAUTHERM carrier pipes are warranted for 25 years in operating conditions at or below 180°F (82.2°C) for buried outdoor wood boiler energy transfer applications when handling, use, installation and maintenance continually complies with all REHAU technical guidelines.

NOTICE: Installer must verify the system has the necessary hydronic controls (e.g., air eliminators, temperature limit controls) to ensure the pressure/temperature in the OWB pipe is not exceeded. Excess water pressure/temperature and/or steam pockets can lead to pipe failure.

Freeze Break Resistance

PEXa carrier pipe will expand as water freezes in the pipe, as long as the pipe has room to expand. When the water thaws, the pipe returns to its original shape. If portions of the pipe are encased in a solid mass such as concrete, hard-packed soil or rigid insulation, then expansion of the pipe evenly along its length may be prevented and the pipe may break if frozen.

NOTICE: Frozen pipes can burst. Installer must take precautions to ensure that pipes do not freeze.

Ultraviolet (UV) Resistance

Plastics are susceptible to damage from exposure to the ultraviolet (UV) radiation in sunlight. REHAU's PEXa carrier pipes can be designed to protect against short-term UV damage, but after some time, UV radiation will reduce the lifespan of the pipe. The extent of the reduction depends on factors such as temperature and pressure, and chlorination levels in potable water. If excessive UV exposure occurs, the PEXa carrier pipes may not last their full design life. REHAU has performed extensive testing of PEXa carrier pipes exposed to natural sunlight, leading to the maximum UV exposure times expressed in accumulated days. Once the pipes leave the manufacturing plant, any exposure to UV, including transportation and storage by distribution, is part of the accumulated exposure time. Maximum accumulated exposure times are listed in the pertinent REHAU Technical Bulletin.

Exposure of the PEXa carrier pipe to UV radiation should be prevented. Protective caps or bags placed on the ends of OWB pipe should not be removed until ready to install.

NOTICE: Failure to follow maximum UV exposure limits may damage the pipe resulting in leaks and operational failures, and will negate any warranty provided by REHAU for RAUPEX O₂ Barrier and RAUTHERM FW pipes.

Chemical Compatibility

PEXa carrier pipe is compatible with common glycols, typically ethylene or propylene, used in hydronic piping systems as well as common corrosion inhibitors.

NOTICE: Do not allow pipe to come in contact with petroleum products and other chemicals such as solvents and glues. These substances may cause the pipe to fail, resulting in property damage and loss of water pressure.

PEXa carrier pipe is resistant to a wide range of chemicals. However, while some chemicals may not harm the pipe, chemical concentration, temperature, pressure and other parameters can influence the lifetime of a pipe. If you have questions regarding chemical compatibility, contact your REHAU regional sales office.

Dimensions

RAUPEX is REHAU's tradename for ASTM copper tube sized (CTS) SDR9 PEXa pipes in accordance to ASTM F876, F877, CSA B137.5 and PPI TR-3. RAUTHERM is REHAU's tradename for metric-sized SDR11 PEXa pipes in accordance to ISO 15875 and DIN 16892.

The standard dimensional ratio (SDR) equates the outside diameter to the wall thickness.

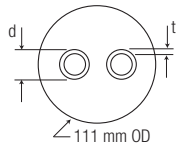


Table 2: PEXa Carrier Pipe Sizes

Description	SDR	d (avg)		t (min)		Volume	
		in.	mm	in.	mm	gal/ft	L/m
1 in. RAUPEX O ₂ Barrier	9	1.125	28.6	0.125	3.2	0.031	0.39
1 1/4 in. RAUPEX O ₂ Barrier	9	1.375	34.9	0.153	3.9	0.047	0.58
32 mm RAUTHERM FW	11	1.266	32.2	0.114	2.9	0.043	0.54

Friction Loss

The pressure loss in a closed energy piping system depends on the flow rates, water temperatures and the properties of the fluid. Use the REHAU PEXa Piping Systems Pressure Loss Tables for the applicable pressure loss table presented at typical flow rates and water temperatures for propylene glycol. The pressure loss in the PEXa carrier pipe is based on the application of the D'Arcy-Weisbach equation and fluid properties from ASHRAE Fundamentals.

Polyurethane Foam

The insulation of the OWB pipes is made of rigid closed-cell polyurethane (PUR) foam using a pentane blowing agent. The PUR foam is free from CFCs and HCFCs.

Thermal conductivity: $< 0.2 \text{ Btu}\cdot\text{in}/\text{h}\cdot\text{ft}^2\cdot^\circ\text{F}$ ($0.03 \text{ W}/\text{m}\cdot^\circ\text{C}$)

3.3 Polyethylene Casing

The outer casing of the OWB pipe is manufactured with flexible low-density polyethylene (LDPE) which has excellent strength, puncture and cut resistance, water resistance and thermal insulation properties.

Color: Carbon black $> 2.5\%$

Thermal conductivity: $3.0 \text{ Btu}\cdot\text{in}/\text{h}\cdot\text{ft}^2\cdot^\circ\text{F}$ ($0.43 \text{ W}/\text{m}\cdot^\circ\text{C}$)

Density: $59 \text{ lb}/\text{ft}^3$ ($950 \text{ kg}/\text{m}^3$)

3.4 OWB Pipe Accessories

REHAU offers a variety of accessories for OWB pipe installations including compression nut and F2080/SDR11 compression-sleeve fittings, wall penetration rings, end caps, coupling insulation kits and repair tape. See the REHAU Sustainable Building Technology Product Catalog for a complete list.

4. DESIGNING OWB PIPE SYSTEMS

4.1 Pressure Loss

The pressure loss from the OWB pipe is one factor used in sizing the system's circulator pump.

Pressure Loss Calculation

Use the following calculation to find the pressure loss of your OWB pipe.

1. Refer to Head Loss Tables in the Appendix. Find the table for the size of carrier pipe and the type of fluid you are using.
2. Find the intersection of the row for the flow rate of the fluid and the column of the fluid temperature. The number at this intersection is the feet of head loss per 100 ft of carrier pipe.

Example, given:

150 ft of (2) 1 in. OWB pipe

20% polypropylene glycol fluid

5 gpm flow rate

140°F average fluid temperature

The head loss value in the table is: 3.28

3. Calculate the length of carrier pipe in your system in hundreds of feet.

150 ft of (2) 1 in. OWB pipe = 300 ft of 1 in. carrier pipe

4. Multiply the head loss value by the feet of carrier pipe in the system.

$3.28 \times 300/100 = 9.8$ ft of head loss

4.2 Heat Loss for Buried Pipes

OWB pipe is ideally suited to reduce heat loss into the ground under normal operating conditions. Use the following equation along with the values in Tables 3 and 4 to find the heat loss of your system.

REHAU uses three typical native soil types for purposes of heat loss calculations. Even though the OWB pipe will be surrounded by sand, use the native soil properties for heat loss calculations.

Table 3: Thermal Conductivity of Typical Native Soil Types

Native Soil Type	Description	Thermal Conductivity	
		Btu-in/h-ft ² ·°F	W/m·°C
dry	well to excessively drained, coarse-textured particles	1	0.1
medium	well drained with moderately fine or medium-textured particles, or poorly drained with moderately coarse textured soil	8	1.2
moist	poor to very poorly drained, fine-textured soils or peats	15	2.2

Heat Loss Calculation

Use the following calculation to solve for heat loss (Q_{OWB}):

$$Q_{OWB} = \frac{L \times \left[\frac{T_{supply} + T_{return}}{2} - T_{soil}^1 \right]}{R_{OWB}}$$

Q_{OWB} – heat loss (Btu/h)

L – length of the OWB pipe being used

T_{supply} – temperature of your supply water

T_{return} – temperature of your return water

T_{soil}^1 – temperature of soil

R_{OWB} – total thermal resistance of buried OWB pipe

¹Native soil temperatures vary month to month. Use the lowest native soil temperature for calculating heat loss. If the native soil temperature is not known, consult with the supplier of the outdoor wood boiler or your REHAU regional representative for assistance.

Example, given:

150 ft of (2) 1 in. OWB pipe

39 in. buried depth to center of OWB pipe

160°F supply hot water temperature

120°F return hot water temperature

50°F lowest soil temperature

Medium native soil type

Solution:

$R_{OWB} = 10.2$ (per Table 4)

$Q_{OWB} = 150 \times [(160 + 120)/2 - 50] / 10.2$

$Q_{OWB} = 1,323$ Btu/h

Table 4: Total Thermal Resistance of OWB Pipe (Row_B)

Total Thermal Resistance Row _B (h·ft·°F/Btu)				
Native Soil Type		dry	medium	moist
Depth of Bury to OWB Pipe Centerline	Carrier Pipe Size 1 + 1 in.			
	19 in (48 cm)	14.6	10.1	9.8
	27 in (69 cm)	15.4	10.2	9.8
	39 in (99 cm)	16.0	10.2	9.9
	51 in (130 cm)	16.5	10.3	9.9
	63 in (160 cm)	16.9	10.4	9.9
	75 in (190 cm)	17.2	10.4	9.9
	87 in (221 cm)	17.5	10.4	10.0
	99 in (251 cm)	17.8	10.5	10.0
	105 in (266 cm)	17.9	10.5	10.0
	Carrier Pipe Size 32 + 32 mm			
	19 in (48 cm)	13.5	8.9	8.6
	27 in (69 cm)	14.2	9.0	8.7
	39 in (99 cm)	14.8	9.1	8.7
	51 in (130 cm)	15.4	9.1	8.7
	63 in (160 cm)	15.8	9.2	8.8
	75 in (190 cm)	16.1	9.2	8.8
	87 in (221 cm)	16.4	9.3	8.8
	99 in (251 cm)	16.6	9.3	8.8
	105 in (266 cm)	16.7	9.3	8.8
	Carrier Pipe Size 1 1/4 + 1 1/4 in.			
	19 in (48 cm)	12.6	8.0	7.7
	27 in (69 cm)	13.3	8.1	7.8
	39 in (99 cm)	13.9	8.2	7.8
	51 in (130 cm)	14.5	8.2	7.8
	63 in (160 cm)	14.9	8.3	7.9
	75 in (190 cm)	15.2	8.3	7.9
	87 in (221 cm)	15.5	8.4	7.9
	99 in (251 cm)	15.7	8.4	7.9
	105 in (266 cm)	15.8	8.4	7.9

Values assume average native soil property conditions classified in Table 3

4.3 Above-Ground Placement of Pipe

When OWB pipe is installed in a non-buried application, the installation must account for the natural tendency of the pipe to expand due to temperature changes and must protect the pipe from direct exposure to UV radiation.

NOTICE: Conceal all above-ground installations of OWB pipe from UV radiation (sunlight).

Non-buried applications must be properly supported. Check local codes for maximum distances between support devices. If none are specified, horizontal and vertical runs should be supported every 3 ft (91 cm).

Heat loss calculations need to be adjusted for non-buried sections using guidelines provided in ASHRAE S11 Pipes in Air.

5. HANDLING OWB PIPE

Improper handling and storage can damage OWB pipes, accessories and fittings, reducing the system's thermal performance and durability.

Handling OWB pipe coils can also be dangerous because they weigh between 150 to 1,500 lbs (68 to 680 kg).

⚠ WARNING! To reduce the risk of serious injury, use caution, appropriate equipment and techniques when handling OWB pipe coils.

5.1 Transportation and Handling Pipe

- Use at least two people and appropriate equipment when handling OWB coils.
- Make sure forklift tines are covered with a soft material (e.g., plastic or cardboard tubes) and support the entire coil width.
- Use transport straps of at least 2 in (5 cm) in width when lifting coils with a backhoe; do not use ropes or chains.
- Transport coils lying completely flat on a clean, smooth surface.
- Secure coils during transport to prevent movement.
- Avoid all impact blows, gouging or abrasions to coils. If pipe is damaged, refer to Section 8.3 for instructions on repairing the pipe.
- Do not drag the lower part of the coil across the ground or loading area.
- Lower (do not drop) coils to the ground.

5.2 Storing Pipe

- Store pipe coils horizontally on wooden pallets that support the entire coil width.
- Do not store pipe coils upright because they might fall.
- Brace and chock coils to prevent rolling or tipping if coils must be stored upright.
- Do not store pipe coils on top of sharp objects that could penetrate the outer casing.
- Protect the pipe from direct sunlight for prolonged periods of external storage or in areas with intense solar radiation (e.g., seashore or at altitudes over 5,000 ft [1.5 km]).
- When covering pipe with tarps, provide good ventilation to prevent heat build-up.
- Do not remove protective end caps until you are ready to make pipe connections. Reuse and reinstall protective end caps when storing unused pipe.
- Avoid contact with petroleum products and other chemicals such as solvents and glues.

6. PREPARING THE TRENCH

OWB pipe is suitable for depths ranging from a minimum pipe cover of 2 ft (61 cm) to a maximum buried depth of 8.5 ft (2.6 m).

6.1 Planning the Pipe Installation

NOTICE: Check frost line location with local codes and check utility locations with utility companies before you begin digging your trench.

1. Mark the intended route for the OWB pipe. Check with the utility companies to ensure the path is clear.
2. Make sure the system design has the pipe placed below the frost line to prevent movement. Verify the location with local building codes before proceeding.

6.2 Excavating the Trench

⚠ WARNING! To reduce the risk of injury to installation personnel, make sure all trenches are properly shored in accordance with federal, state, provincial and local regulations (including OSHA 2226 Excavations).

1. Excavate trench according to the system design and in compliance with all applicable codes and regulations.
2. Use the dimensions in Fig. 4 as a guide for sizing your trench.
3. Fill the bottom of the trench with 4 in (10 cm) hand-packed sand before laying the OWB pipe. A minimum of 4 in (10 cm) of sand should surround the pipe to protect the pipe from sharp objects and ensure the thermal performance of the system.

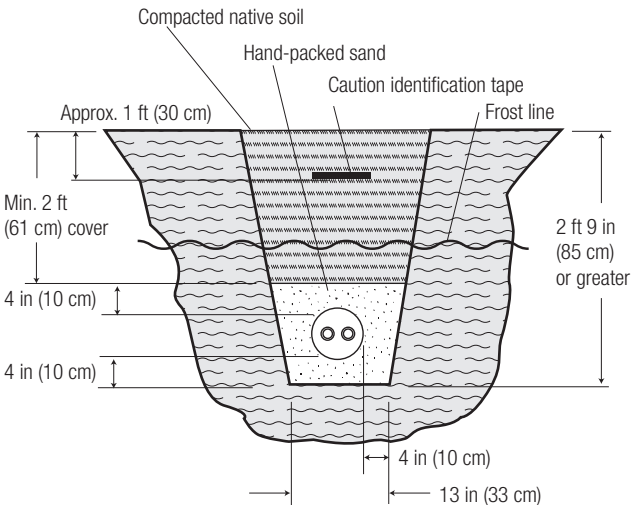


Fig. 4: OWB pipe trench design

7. PLACING OWB PIPE

! Follow the transportation and handling recommendations in Chapter 5 to minimize the risk of personal injury.

Check pipes and accessories for any transportation and storage damage before placing them in the trench. Do not install damaged pipes and pipeline components.

7.1 Uncoiling OWB Pipe

! **WARNING!** To reduce the risk of serious injury, use caution, appropriate equipment and techniques when handling OWB pipe coils.

- Use two people and appropriate equipment to make sure the coil does not fall over.
- Pipe ends can spring out when straps are cut. Stand clear when opening coils.
- Do not cut all the straps at once. The coil can twist and kink or become unstable and fall over.

1. Hold the OWB pipe coil in an upright position.
2. Cut the straps one layer at a time, starting with the outermost straps.
3. Unwind the coil one layer at a time, making sure the uncoiled pipe does not twist and kink.

7.2 Bending OWB Pipe

The high flexibility of OWB pipe allows you to bypass obstacles and make changes of direction in trenches without the need for connections.

- Achieve the minimum bending radii of 3 ft (0.9 m) down to 50°F (10°C).
- Warm pipe coils for a few hours in a heated building or tent to maintain this flexibility before doing installations in near-freezing temperatures.

8. MAKING CONNECTIONS

REHAU offers two fittings options for making OWB pipe connections – compression nut fittings and F2080/SDR11 compression-sleeve fittings.

Anchor the connections that will receive the OWB fittings at each end. Do not anchor the OWB outer casing, sleeve of F2080/SDR11 fitting or nut of compression nut fitting.

8.1 Compression Nut Fittings

RAUPEX carrier pipes can be connected to threaded fittings or copper adapter fittings that can be threaded or soldered on to copper pipes. REHAU offers 1 in. compression nut fittings for use with OWB pipe. For 1 1/4 in. and 32 mm connections, contact your local plumbing supplier.



Fig.5: Compression nut fittings

⚠ CAUTION! Wear safety glasses and gloves when making joints to reduce the risk of personal injury.

NOTICE: Do not damage the carrier pipe or its oxygen diffusion barrier when making joints. Cuts and scratches to the carrier pipe can reduce its pressure rating and oxygen resistance.



1. Cut OWB pipe with a fine-toothed saw.

⚠ CAUTION! OWB pipe can spring back when cut. Secure both sections of pipe when cutting to minimize the risk of personal injury.

NOTICE: Reinstall protective end caps if storing unused pipes (see Section 5.2).



2. Mark the outer casing 9 in (23 cm) from the end where the carrier pipe is to be exposed.

Note: If the end of the pipe is not cut square, add an extra 1/4 to 1/2 in (5 to 10 mm) so the carrier pipe can be trimmed in Step 5.



3. Cut the casing all the way around with a saw or pipe cutter, making sure not to damage the carrier pipes. Peel the casing off.



4. Remove the foam with a blunt tool.

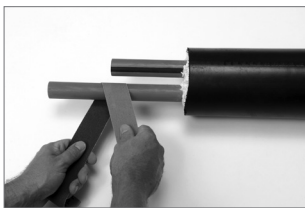
NOTICE: Do not use a sharp tool that can damage the pipe or its oxygen diffusion barrier.



5. Cut one carrier pipe 1/4 to 1/2 in (5 to 10 mm) to square the end. Cut the other carrier pipe 4 in (10 cm) shorter to offset the compression nut fittings for easier installation.

NOTICE: A clean, square cut of the

RAUPEX carrier pipe is required for a proper fitting connection. The REHAU Ratchet Cutter provides a clean, square and accurate cut. Do not cut RAUPEX carrier pipe with a saw blade, as the rough edges will interfere with fitting connections.



6. Use sandpaper to remove the remaining foam from the carrier pipe. Be careful not to damage the pipe or its oxygen diffusion barrier.



7. Slide the wall penetration ring onto the OWB pipe (see Section 9.2).

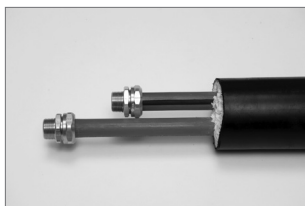


8. Slide the compression nut over the pipe with threads facing the pipe end. Slide the compression ring over the pipe.

Note: Perform any required soldering of fittings before beginning Step 8.



9. Thread one compression nut and ring onto the fitting to hand tight, then tighten an additional 1/4 to 1/2 turn.



10. Repeat Step 8 and 9 for the second fitting.

Once hot water is circulating through the system, check for leaking. Re-tighten the fittings, if required.

NOTICE: Do not overtighten. Overtight joints will leak.

8.2 F2080/SDR11 Compression-Sleeve Fittings and Tools

REHAU PEXa carrier pipes can also be connected using F2080/SDR11 brass compression-sleeve fitting. This fitting system is designed for use exclusively with RAUPEX pipe and should be assembled only with F2080/SDR11 compression-sleeve tools.

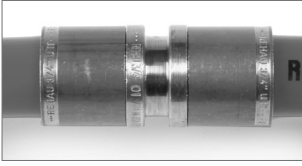


Fig. 6: F2080C fitting

The basic process of making a F2080/SDR11 compression-sleeve joint is first to expand the carrier pipe with the expander tool using the appropriately sized head, and then to compress the fitting together using the compression tool.

A complete step-by-step guide to making connections can be found in the REHAU *F2080/SDR11 Assembly Product Instructions* available online.

Refer to Section 8.1, steps 1 through 7 for the steps required to prepare the OWB pipe before making the F2080/SDR11 compression-sleeve joint.

8.3 Repairing OWB Pipe

Damage to the outer casing of OWB pipe can be repaired using waterproof, synthetic rubber adhesive tape.



Fig. 7: Repair tape

To repair damage to foam insulation:

1. Fill any void in the polyurethane foam with canned spray polyurethane foam.
2. Wrap the outer casing with REHAU Repair Tape.

To repair damage to carrier pipes:

1. Cut out the damaged section of carrier pipe.
2. Connect the two sections of OWB pipe with a F2080/SDR11 compression-sleeve joint and a REHAU universal coupling insulation kit. These kits are molded from rigid polyethylene with staggered ends that can be cut for use with various pipe diameters. Kits include two heat shrink sleeves for sealing around the OWB pipe.



Fig. 8: Universal coupling insulation kit

9. PENETRATING THE BUILDING WALL

9.1 Positioning the Pipe

If the OWB pipeline runs parallel to the building, the entry bend radius into the building must be no less than 3 ft (0.9 m) at 50°F (10°C). To complete the connections inside the building, the pipes must project 10 in (25 cm) or more into the building.

9.2 Installing the Wall Penetration Ring

There are two options when penetrating through an exterior below-grade wall – bored hole or wall breakthrough. Both methods require installing a wall penetration ring and filling around the ring with concrete.

Note: It may be necessary to contact an architect or engineer before boring through walls, floors or ceilings.



Fig. 9: Wall penetration ring

REHAU supplies a Neoprene wall penetration ring that fits tightly over the OWB pipe casing and helps to prevent water from penetrating into the building.

REHAU recommends the following wall penetration steps:

1. Make a bored hole or wall breakthrough with a minimum diameter of 10 1/2 in (27 cm). This provides a 3 in (7 cm) clearance between the OWB pipe and the sides of the hole.
2. Apply sealant in and around the hole to seal any hairline cracks that arise during wall breakthrough.
3. Position the wall penetration ring with the large end facing inward and the small tapered end facing toward the exterior side of the building wall.
4. Insert the pipe with the wall penetration ring into the bored hole or wall breakthrough at least 3 in (7 cm) from the outside wall surface.
5. Fill the hole with concrete.

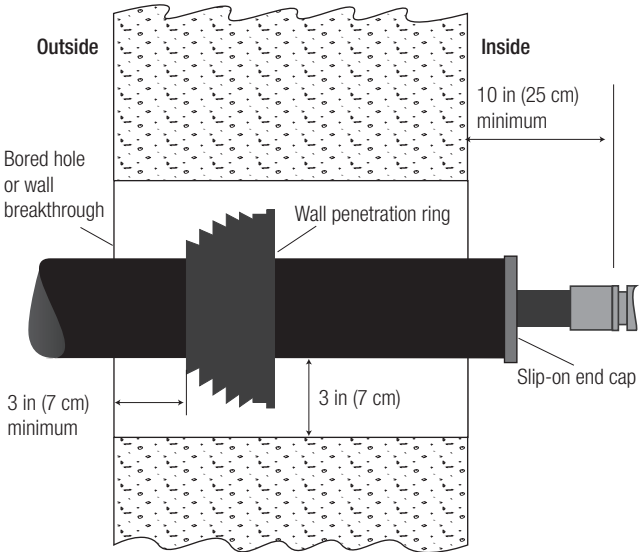


Fig. 10: OWB pipe penetrating building wall, side view

9.3 Covering Exposed Pipe Ends

REHAU recommends the use of a slip-on end cap to close off the casing after the OWB pipe penetrates the building wall. In most cases, the OWB pipe can be routed through the building penetration first and stripped afterwards. However, if the slip-on end cap will be located within the building wall, the outer casing and foam insulation should be stripped back before the pipe is laid in the trench and routed through the building wall.



Fig. 11: Slip-on end cap

Slip-on end caps improve the cosmetic appearance on the ends of OWB pipes inside a building or chamber. They are not watertight and are not certified for burial underground.

To install push-on end caps:

1. Expose carrier pipe in accordance with Section 8
2. Slide on end cap
3. Complete the connection

10. TESTING THE SYSTEM

Before backfilling the trench, pressure test the OWB pipe and connections. The pressure test can be carried out immediately after completing the connections.

10.1 Flushing

1. Verify that the supply and return pipes are correctly connected. The black line on one of the carrier pipes can help you distinguish supply from return.
2. Flush all pipe sections with water or a water/glycol mixture to remove any dirt or debris that may have entered the pipeline during installation.

10.2 Pressure Testing

Perform a pressure test on the system to make sure the OWB pipe and connections are leak-free. When performing the pressure test, ambient air temperature will affect the gauge pressure, so perform all pressure tests at a constant temperature. Test pressures should not exceed 150 psi (10 bar).

Note: If there is a chance that the water could freeze, fill the system with a water/glycol mixture or perform an air test.

REHAU recommends the following pressure test procedure for pipe and fittings:

1. Perform a preliminary pressure test pressurizing the system to the greater of 1.5 times the maximum operating pressure, or 100 psi (6.9 bar), for 30 minutes.
2. As the piping expands, restore pressure, first at 10 minutes and again at 20 minutes into the test.
3. At the end of the 30-minute preliminary test, pressure must not fall by more than 5 psi (0.3 bar) from the maximum, and there must be no leakage.
4. Perform the main pressure test immediately. The main pressure test must last at least 2 hours. The test pressure must be restored and must not fall more than 3 psi (0.2 bar) after 2 hours. There must be no leakage.

Record the following test data and provide it to the building owner:

- Installation/project details including pipe length (interval markings on the pipe can help you calculate total length)
- Test pressure
- Time the pipeline was under pressure
- Test date
- Confirmation that the pressure test has been performed properly

11. BACKFILLING THE TRENCH

Cover the installation of OWB pipe with backfill as soon as possible to help protect the pipe from flooding, shifting, UV exposure, vandalism or damage due to temperature extremes. Refer to the trench diagram in Section 6.2.

1. Surround the pipe with a minimum of 4 in (10 cm) of sand.

Note: Native soil can be used for the remaining fill, as long as there are no large, frozen or sharp objects such as rocks or debris greater than 1 1/2 in (4 cm) in diameter.

2. Add 2 in. (5 cm) of the fill material by hand for a total height of at least 6 in (15 cm) above the OWB pipe.
3. Continue filling and compacting the trench using a mechanical device to 12 in (30 cm) below the surface, taking care not to disturb the pipe.
4. Install Caution Identification Tape to improve pipeline identification during future excavation work.
5. Complete the backfilling and compacting to the surface level.

For updates to this publication, visit na.rehau.com/resourcecenter

The information contained herein is believed to be reliable, but no representations, guarantees or warranties of any kind are made as to its accuracy, suitability for particular applications or the results to be obtained therefrom. Before using, the user will determine suitability of the information for user's intended use and shall assume all risk and liability in connection therewith. © 2017 REHAU