

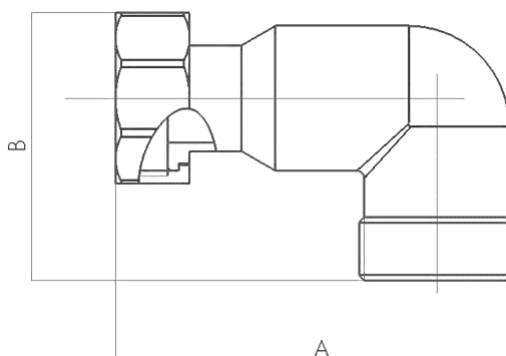
# PRODUCT SUBMITTAL 231

## PRO-BALANCE® BSPP Angle Piece



**Product:** PRO-BALANCE® BSPP Angle Piece

**Date:** 19 June 2023 (supersedes 01 August 2018)



Article No.	Description	A in (mm)	B in (mm)
250214-001	1 in. 90° BSPP Angle Piece	2.55 (65)	2.24 (57)
281981-001	1 1/4 in. 90° BSPP Angle Piece	4.21 (107)	2.83 (72)

### TECHNICAL DESCRIPTION

Material	Body and components are brass, fiber gasket
----------	---

### FUNCTIONAL DESCRIPTION

For use with PRO-BALANCE or HKV manifolds in sizes indicated. Angle pieces (elbows) can be used to install PRO-BALANCE manifold isolation valves at a right angle to manifold, such as when supplying a horizontally-mounted manifold with pipes from below. Angle pieces include union nut and gasket.

For updates to this publication, visit [na.rehau.com/resourcecenter](http://na.rehau.com/resourcecenter)

The information contained herein is believed to be reliable, but no representations, guarantees or warranties of any kind are made as to its accuracy, suitability for particular applications or the results to be obtained therefrom. Before using, the user will determine suitability of the information for user's intended use and shall assume all risk and liability in connection therewith.

© 2023 REHAU