

# RAUVISIO CRYSTAL

## Use and maintenance instructions



Congratulations on choosing a product made from this high-quality and durable material.

RAUVISIO crystal is a hard-wearing and resistant surface material made from acrylic. It is suitable for vertical application indoors.

The non-porous, homogeneous material is hygienic and suitable for contact with foodstuffs and is resistant to fungal and bacterial growth.



The product is resistant to all household chemicals and substances such as disinfectants. Extended use of aggressive substances can leave marks or damage the material. The following table shows the chemical resistance against common substances. Testing the chemical resistance to other substances not listed in the table is the responsibility of the user.

Substances	Result
Acetic acid	No visible change
Citric acid	No visible change
Sodium carbonate	No visible change
Ammonia water	No visible change
Ethyl alcohol	No visible change
White wine, red wine, fortified wine	No visible change
Beer	No visible change
Cola drink	No visible change
Instant coffee	No visible change
Black tea	No visible change
Blackcurrant juice	No visible change
Evaporated milk	No visible change
Water	No visible change
Petrol	No visible change
Acetone	No visible change
Ethyl-butylacetate	No visible change
Butter	No visible change
Olive oil	No visible change
Mustard	No visible change
Cooking salt	No visible change
Onion juice	No visible change
Disinfectants	No visible change
Black ball pen paste ink	No visible change
Stamp ink	No visible change
Cleaning agent	No visible change
Cleaning solution	No visible change



RAUVISIO crystal is easy to clean – most soiling and finger marks can be removed with water and a microfibre cloth. In addition, household liquid cleaners can be used to clean the surface.



Strong solvents, special cleaners (e.g. drain cleaners, industrial cleaners), aggressive scouring agents and strong chemical substances may damage the surface. Remove stubborn soiling with a soft sponge, common plastic cleaner or liquid cleaner (without scourer).

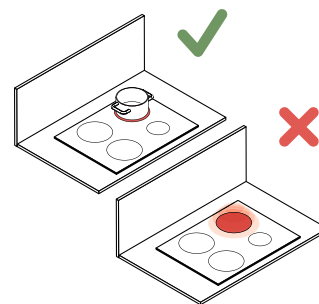
Do not use abrasive cleaning sponges with scourers (e.g. Scotch Brite, scouring pads, etc.) or brushes; these can cause scratches if too much force is applied.

Refrain from using mechanical cleaning processes, e.g. razor blades, knives or scrapers, etc., as this can cause scratches and damage the abrasion-resistant coating.



RAUVISIO crystal has an outstanding depth effect. The surface has a high-gloss or matt and a scratch- and abrasion-resistant coating, which keeps domestic wear and tear to a minimum.

In the case of improper use, such as if the burners are not or only partially covered when switched on for long periods or if there is direct contact with hot pots and pans, etc., temperature damage can occur to the surface.



Proper and improper use