

Engineering progress
Enhancing lives

RAUBIOXON PLUS & RAUBIOFLEX

Advanced aerator systems



REHAU aerator systems

REHAU's fine bubble aerator systems represent the finest in German engineering and production technology. Each product is designed, manufactured, and tested to REHAU's superior standards of quality and certified to ISO9001 quality and ISO14001 (environmental) standards.

**Patented
technology**

Comprehensive fine bubble aerator program consisting of:

- Pipe and disc aerators with the patented 'Saddle Lock' connection system suitable for all major air distribution pipe dimensions
- Choice of silicone and EPDM fine bubble membranes
- Air distribution pipe work
- Complemented by our comprehensive design and technical application support.



**German
Quality**



Systems overview



RAUBIOXON PLUS (Silicone)

REHAU's innovative RAUBIOXON silicone membrane has consistently delivered superior performance with regard to resistance to fouling and better long-term oxygen transfer rate. The RAUBIOXON silicone membrane is a homogenous inert material that does not require any plasticiser for flexibility, meaning that it maintains its physical properties for the entire service life and fouls at a much lower rate than traditional technologies.

The result is longer service life + reduced back-pressure build up = lower power consumption + reduced maintenance costs + higher long term oxygen transfer rates.



High temperature resistance
of up to **120°C**



High tear strength of
45 N/mm (acc. to ASTM D624B)



RAUBIOFLEX (EPDM)

RAUBIOFLEX is a high quality EPDM membrane system with excellent oxygen transfer rates designed to meet most project capital budgets.



High temperature resistance
of up to **80°C**



Tear strength of
18 N/mm (acc. to DIN 53507A)



Quick saddle lock connection

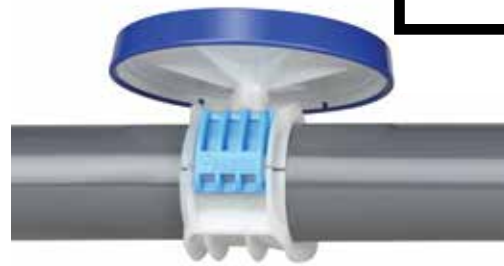
REHAU has developed the pipe and disc saddle lock connection to speed up installation:

- Snap-on fastener for fast installation and removal when required
- No risk of loosening of aerator
- No tool required

Patented saddle lock connection



Pipe saddle



Disc saddle

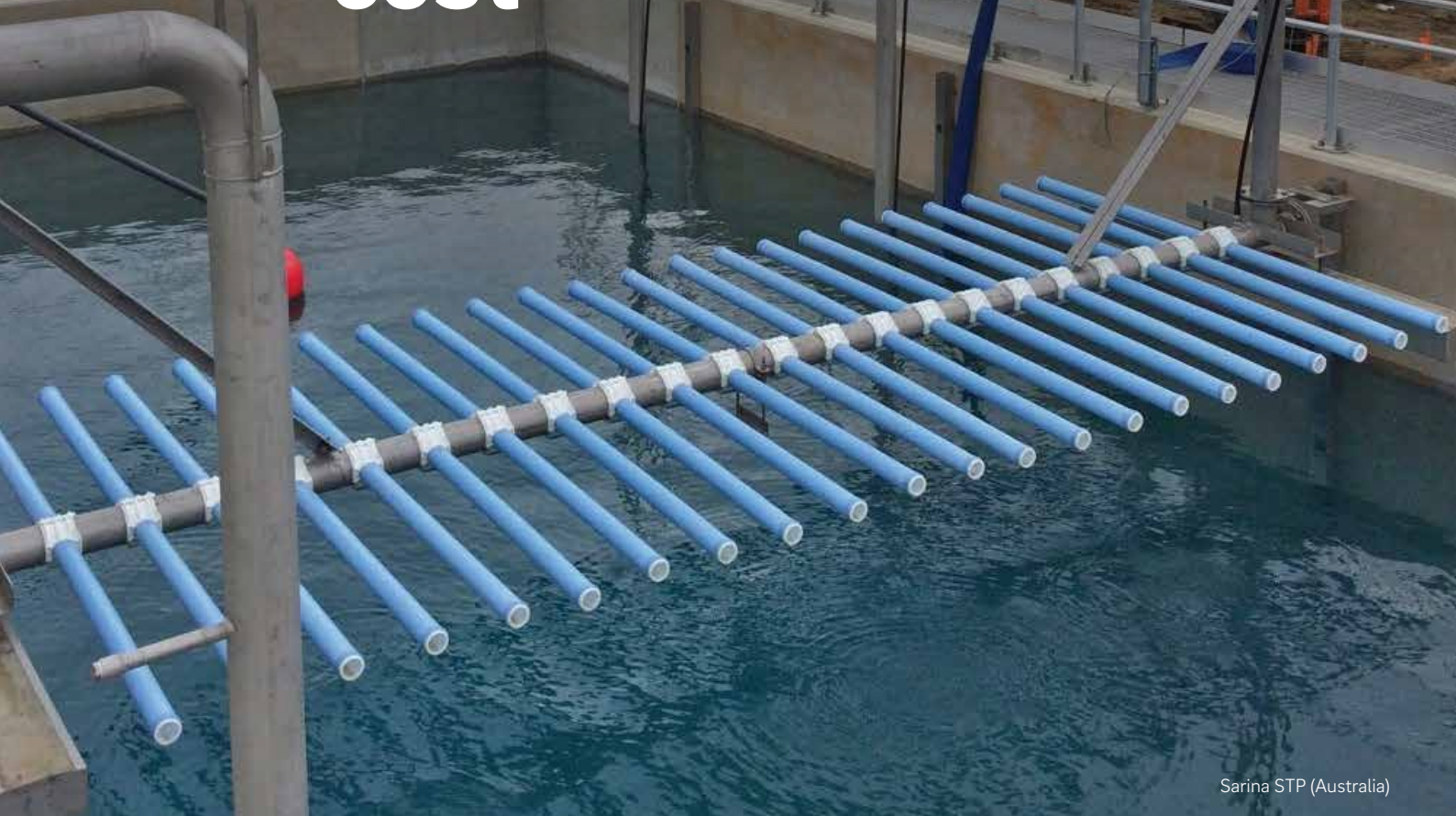
HOW IT WORKS



Patented saddle lock connection means effortless and fast installation of REHAU pipe aerators. With the two-step saddle lock connection, installation time is reduced from 60 man-hours to 8 man-hours for a typical medium-size sewage treatment plant using pipe aerators with threaded connection system.



Lower maintenance cost



Sarina STP (Australia)

Cost-effective from start to finish

RAUBIOXON PLUS silicone membranes do not contain plasticiser and hence the perfect choice by any measure of performance. REHAU formulated RAU-SIK silicone membranes which deliver up to 50% savings in maintenance costs over their long service life.

Our silicone aerators help you save in multiple ways:

Longer service life

up to 200% compared to EPDM aerator

Lower maintenance cost

up to 50% saving

Lower installation cost

up to 80% saving



Lower power consumption cost

Energy Efficiency

Engineering solutions for energy savings

The RAUBIOXON PLUS advanced silicone membrane is homogeneous (i.e. contains no plasticisers) and inert. The result is superior resistance to membrane fouling and changes to its physical characteristics caused by hardening or shrinkage.

Measured by a reduced build up of diffuser backpressure the silicone membrane has proven to outperform traditional materials (such as ceramic and/or EPDM). Considering the ideal isentropic compressor formula we can see that every 1kPa increase will equal 2-3% increase in blower power consumption.

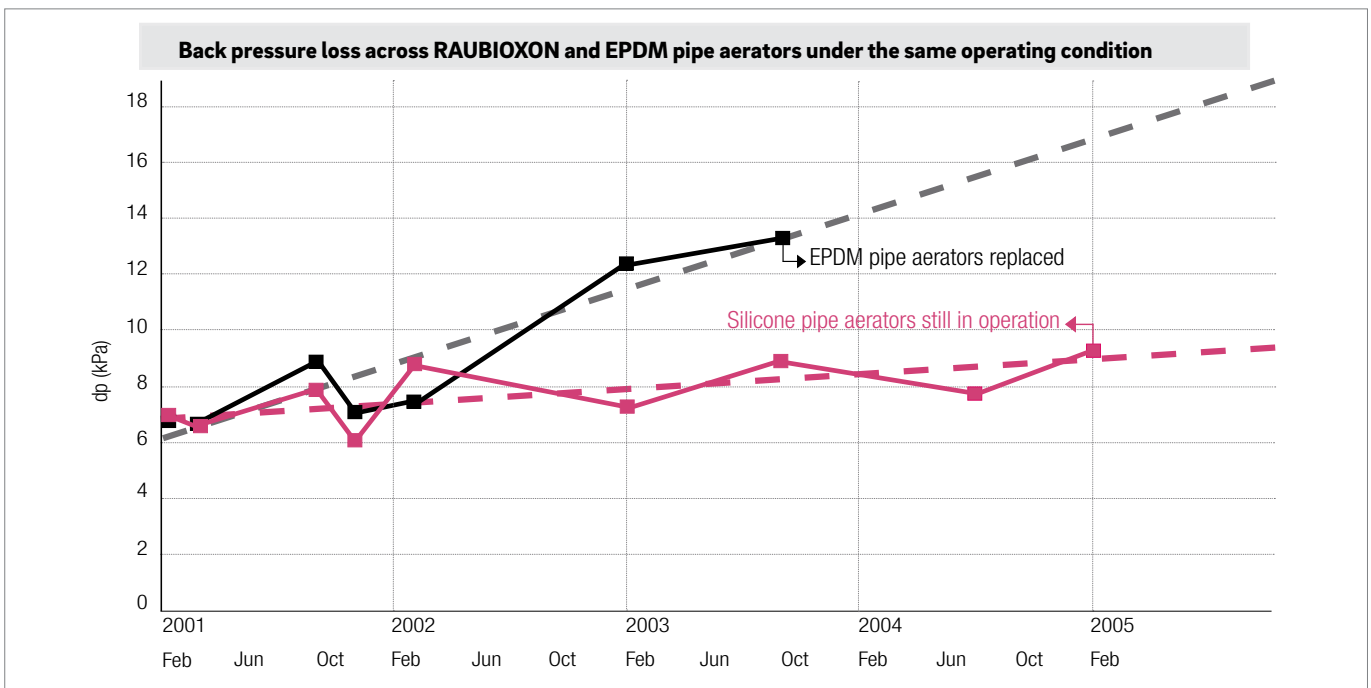


High oxygen yield

The perforated and elastic silicone membranes provide high oxygen yields, resulting in fewer aerators needed for the same amount of oxygenation (varies from 5% to 10%).

West Hornsby STP Pipe Aerator Trial:

The chart below shows that after three years, the RAUBIOXON PLUS pipe aerators were operating at a pressure loss of 5kPa less than the EPDM diffusers, which equates to more than 10% reduction in blower power consumption (using the ideal isentropic compressor equation)**.



Today, the RAUBIOXON PLUS aerator system is still running efficiently.

** Note: Testing and data collation were conducted by an independent contractor under the supervision of Sydney Water Corporation.

Project references

Municipal (Sewage Treatment)

- Aeration tank
- Aerobic digester
- Sludge holding tank
- Equalisation tank



Tamworth STP (Australia)



Guangxi Yulin STP (China)



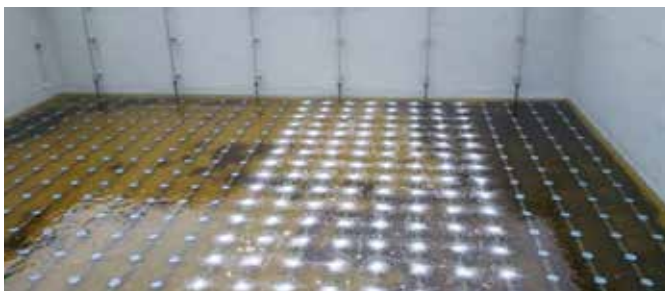
Shah Alam STP (Malaysia)



Sarina STP (Australia)

Industrial (Wastewater Treatment)

- Milk processing
- Leather processing
- Starch production
- Paper and pulp
- Food & Beverage
- Pharmaceutical production
- Fish Processing
- Meat Processing
- Steel manufacturing
- Electronics
- Petrochemical
- Oil Refinery
- Textile manufacturing
- Sugar
- Dairy
- Palm Oil



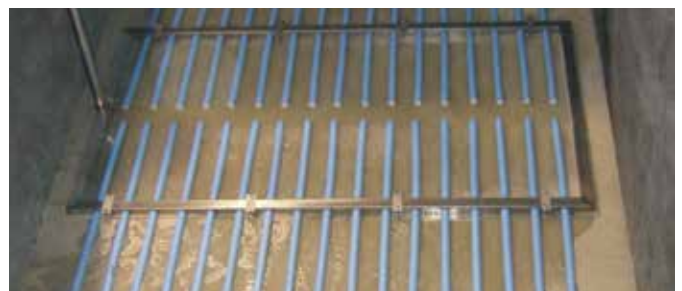
KID Palm Oil WWTP (Indonesia)



EJIP WWTP (Indonesia)



Namviet Fish Processing WWTP (Vietnam)



SATS WWTP (Singapore)

Product range - RAUBIOXON PLUS

Pipe aerator



Article No.	Membrane ID (mm)	Air Distribution Pipe OD (mm)	Effective Length (mm)	Air Flow Range (Nm ³ /h)	*Max Airflow (Nm ³ /h)
RAUBIOXON DUO PIPE AERATORS WITH SADDLE LOCK CONNECTION					
403786-600	Ø64	Ø88.9	1000	2 - 12	24
401487-600	Ø64	Ø88.9	1500	3 - 18	36
414185-600	Ø64	Ø88.9	2000	4 - 24	48
417225-600	Ø64	Ø90	1000	2 - 12	24
401503-600	Ø64	Ø90	1500	3 - 18	36
413462-600	Ø64	Ø90	2000	4 - 24	48
401508-600	Ø64	Ø110	1000	2 - 12	24
401524-600	Ø64	Ø110	1500	3 - 18	36
413522-600	Ø64	Ø110	2000	4 - 24	48
401547-600	Ø64	Ø114.3	1000	2 - 12	24
417203-600	Ø64	Ø114.3	1500	3 - 18	36
417203-600	Ø64	Ø114.3	2000	4 - 24	48
401645-600	Ø92	Ø110	1000	3 - 19	38
401646-600	Ø92	Ø110	1500	4.5 - 28.5	57
417205-600	Ø92	Ø110	2000	6 - 38	76
400618-600	Ø92	Ø114.3	1000	3 - 19	38
417197-600	Ø92	Ø114.3	1500	4.5 - 28.5	57
417198-600	Ø92	Ø114.3	2000	6 - 38	76
406048-600	**Ø92-L	Ø114.3	2000	6 - 38	76
404716-600	**Ø92-L	Ø168.3	2000	6 - 38	76
404721-600	**Ø92-L	Ø219.1	2000	6 - 38	76
RAUBIOXON STD PIPE AERATORS WITH THREADED ROD CONNECTION					
208754-600	Ø64	Ø90, Ø110, Ø140, Ø160	500	1 - 6	12
208755-600	Ø64	Ø90, Ø110, Ø140, Ø160	750	1.5 - 9	18
208759-600	Ø64	Ø90, Ø110, Ø140, Ø160	1000	2 - 12	24
RAUBIOXON STD PIPE AERATORS WITH 1¼" THREAD					
215676-600	Ø64	Ø88.9, Ø90, Ø110, Ø114.3	500	1 - 6	12
209549-600	Ø64	Ø88.9, Ø90, Ø110, Ø114.3	750	1.5 - 9	18
402364-600	Ø64	Ø88.9, Ø90, Ø110, Ø114.3	1000	2 - 12	24

* antimicrobial (AG) version available on request

*Max airflow is used only during maintenance with a duration limit of 10 minutes per day.

**Ø92-L: Low aerator back pressure model.

Disc aerator

Article No.	Diameter (mm)	Air Distribution Pipe OD (mm)	Wall Thickness (mm)	Air Flow Range (Nm ³ /h)	*Max Airflow (Nm ³ /h)
RAUBIOXON DISC AERATORS					
411335-600	DN200	Ø88.9, Ø90, Ø110, Ø114.3	-	0.5 - 5	10
415215-600	DN225	Ø88.9, Ø90, Ø110, Ø114.3	-	1 - 7	14
411345-600	DN300	Ø88.9, Ø90, Ø110, Ø114.3	-	1.5 - 11	22
RAUBIOXON DISC AERATORS WITH CHECK VALVE					
411355-600	DN200	Ø88.9, Ø90, Ø110, Ø114.3	-	0.5 - 5	10
415235-600	DN225	Ø88.9, Ø90, Ø110, Ø114.3	-	1 - 7	14
411365-600	DN300	Ø88.9, Ø90, Ø110, Ø114.3	-	1.5 - 11	22
DISC SADDLE					
417081-006	DN200, DN225, DN300	Ø88.9	-	-	-
417003-006	DN200, DN225, DN300	Ø90	-	-	-
417005-006	DN200, DN225, DN300	Ø110	-	-	-
417111-006	DN200, DN225, DN300	Ø114.3	-	-	-
DISC WEDGE SADDLE					
407098-001	DN200, DN225, DN300	Ø60.3	-	-	-
404712-001	DN200, DN225, DN300	Ø63	-	-	-
404713-001	DN200, DN225, DN300	Ø90	-	-	-
GROMMET					
351628-001	DN200, DN225, DN300	Ø88.9 / Ø90	3.9 ... 4.4	-	-
351629-001	DN200, DN225, DN300	Ø88.9 / Ø90	6.4 ... 6.9	-	-
351087-001	DN200, DN225, DN300	Ø110 / Ø114.3	4.2 ... 4.7	-	-
351086-001	DN200, DN225, DN300	Ø110 / Ø114.3	6.5 ... 7.0	-	-



*Max airflow is used only during maintenance with a duration limit of 10 minutes per day.

Product range - RAUBIOFLEX

Pipe aerator



Article No.	Membrane ID (mm)	Air Distribution Pipe OD (mm)	Effective Length (mm)	Air Flow Range (Nm ³ /h)	*Max Airflow (Nm ³ /h)
RAUBIOFLEX DUO PIPE AERATORS WITH SADDLE LOCK CONNECTION					
401665-600	Ø64	Ø88.9	1000	2 - 12	24
401666-600	Ø64	Ø88.9	1500	3 - 18	36
401667-600	Ø64	Ø88.9	2000	4 - 24	48
401678-600	Ø64	Ø90	1000	2 - 12	24
401679-600	Ø64	Ø90	1500	3 - 18	36
401681-600	Ø64	Ø90	2000	4 - 24	48
401686-600	Ø64	Ø110	1000	2 - 12	24
401687-600	Ø64	Ø110	1500	3 - 18	36
401688-600	Ø64	Ø110	2000	4 - 24	48
401697-600	Ø64	Ø114.3	1000	2 - 12	24
401698-600	Ø64	Ø114.3	1500	3 - 18	36
401699-600	Ø64	Ø114.3	2000	4 - 24	48
on request	Ø92	Ø110	1000	3 - 19	38
on request	Ø92	Ø110	1500	4.5 - 28.5	57
404595-600	Ø92	Ø110	2000	6 - 38	76
on request	Ø92	Ø114.3	1000	3 - 19	38
on request	Ø92	Ø114.3	1500	4.5 - 28.5	57
404593-600	Ø92	Ø114.3	2000	6 - 38	76
406049-600	**Ø92-L	Ø114.3	2000	6 - 38	76
404722-600	**Ø92-L	Ø168.3	2000	6 - 38	76
404723-600	**Ø92-L	Ø219.1	2000	6 - 38	76
RAUBIOFLEX STD PIPE AERATORS WITH THREADED ROD CONNECTION					
401447-600	Ø64	Ø90, Ø110, Ø140, Ø160	500	1 - 6	12
404586-600	Ø64	Ø90, Ø110, Ø140, Ø160	750	1.5 - 9	18
401453-600	Ø64	Ø90, Ø110, Ø140, Ø160	1000	2 - 12	24
RAUBIOFLEX STD PIPE AERATORS WITH 1¼" THREAD					
401457-600	Ø64	Ø88.9, Ø90, Ø110, Ø114.3	500	1 - 6	12
403458-600	Ø64	Ø88.9, Ø90, Ø110, Ø114.3	750	1.5 - 9	18
401463-600	Ø64	Ø88.9, Ø90, Ø110, Ø114.3	1000	2 - 12	24
RAUBIOFLEX STD PIPE AERATOR WITH ¾" THREAD					
404731-600	Ø64	Ø88.9, Ø90, Ø110, Ø114.3	500	1 - 15	24

*Max airflow is used only during maintenance with a duration limit of 10 minutes per day.

**Ø92-L: Low aerator back pressure model.

Disc aerator

Article No.	Diameter (mm)	Air Distribution Pipe OD (mm)	Wall Thickness (mm)	Air Flow Range (Nm ³ /h)	*Max Airflow (Nm ³ /h)
RAUBIOFLEX DISC AERATORS					
860389-600	DN200	Ø88.9, Ø90, Ø110, Ø114.3	-	0.5 - 5	10
800394-600	DN225	Ø88.9, Ø90, Ø110, Ø114.3	-	1 - 7	14
800517-600	DN300	Ø88.9, Ø90, Ø110, Ø114.3	-	1.5 - 11	22
RAUBIOFLEX DISC AERATORS WITH CHECK VALVE					
800397-600	DN200	Ø88.9, Ø90, Ø110, Ø114.3	-	0.5 - 5	10
800396-600	DN225	Ø88.9, Ø90, Ø110, Ø114.3	-	1 - 7	14
800519-600	DN300	Ø88.9, Ø90, Ø110, Ø114.3	-	1.5 - 11	22
DISC SADDLE					
417081-006	DN200, DN225, DN300	Ø88.9	-	-	-
417003-006	DN200, DN225, DN300	Ø90	-	-	-
417005-006	DN200, DN225, DN300	Ø110	-	-	-
417111-006	DN200, DN225, DN300	Ø114.3	-	-	-
DISC WEDGE SADDLE					
407098-001	DN200, DN225, DN300	Ø60.3	-	-	-
404712-001	DN200, DN225, DN300	Ø63	-	-	-
404713-001	DN200, DN225, DN300	Ø90	-	-	-
GROMMET					
351628-001	DN200, DN225, DN300	Ø88.9 / Ø90	3.9 ... 4.4	-	-
351629-001	DN200, DN225, DN300	Ø88.9 / Ø90	6.4 ... 6.9	-	-
351087-001	DN200, DN225, DN300	Ø110 / Ø114.3	4.2 ... 4.7	-	-
351086-001	DN200, DN225, DN300	Ø110 / Ø114.3	6.5 ... 7.0	-	-



*Max airflow is used only during maintenance with a duration limit of 10 minutes per day.

This document is protected by copyright. All rights based on this are reserved.
No part of this publication may be translated, reproduced or transmitted in any form or by any similar means, electronic or mechanical, photocopying, recording or otherwise, or stored in a data retrieval system.

Our verbal and written advice relating to technical applications is based on experience and is to the best of our knowledge correct but is given without obligation.

The use of REHAU products in conditions that are beyond our control or for applications other than those specified releases us from any obligation in regard to claims made in respect of the products.

We recommend that the suitability of any REHAU product for the intended application should be checked. Utilisation and processing of our products are beyond our control and are therefore exclusively your responsibility. In the event that a liability is nevertheless considered, any compensation will be limited to the value of the goods supplied by us and used by you.

Our warranty assumes consistent quality of our products in accordance with our specification and in accordance with our general conditions of sale.

REHAU Branches in Asia Pacific:

SINGAPORE - Regional Office for Asia Pacific

1 King George's Avenue, REHAU Building, Singapore 208557 Tel: +65 6392-6006 Fax: +65 6392-6116

AUSTRALIA National Customer Service Centre Tel: 1300 768 033 **GREATER CHINA** Beijing Tel: +86 10 6428-2956 Chengdu Tel: +86 28 8628-3218 Guangzhou Tel: +86 20 8776-0343 / 3646 Hong Kong Tel: +852 2898-7080 Qingdao Tel: +86 532 8667-8190 Shenyang Tel: +86 24 2287-5807 Shanghai Tel: +86 21 6355-1155 Taicang Tel: +86 512 5337-2888 Taipei Tel: +886 2 8780-3899 Xi'an Tel: +86 29 6859-7000 **INDIA** Bangalore Tel: +91 80 2222-0014 Mumbai Tel: +91 22 6148-5858 New Delhi Tel: +91 11 4848-5600 Pune Tel: + 91 21 3567-4301 / 4340 **INDONESIA** Jakarta Tel: +62 21 4587 1030 **JAPAN** Tokyo Tel: +81-3-3292-8337 **NEW ZEALAND** Auckland Tel: +64 9 2722-264 **PHILIPPINES** Manila Tel: +63 2 654-5120 **THAILAND** Bangkok Tel: +66 2763-5100 **VIETNAM** Ho Chi Minh City Tel: +84 8 3823-3030
www.rehau.com

© REHAU
Errors and changes are to be
expected

SEA001 BT 02.2020