



**Engineering progress  
Enhancing lives**

## **Meeting impact codes has never been easier**

REHAU System 190 hung-slider with  
RAUSHIELD storm protection  
[na.rehau.com/raushield](http://na.rehau.com/raushield)



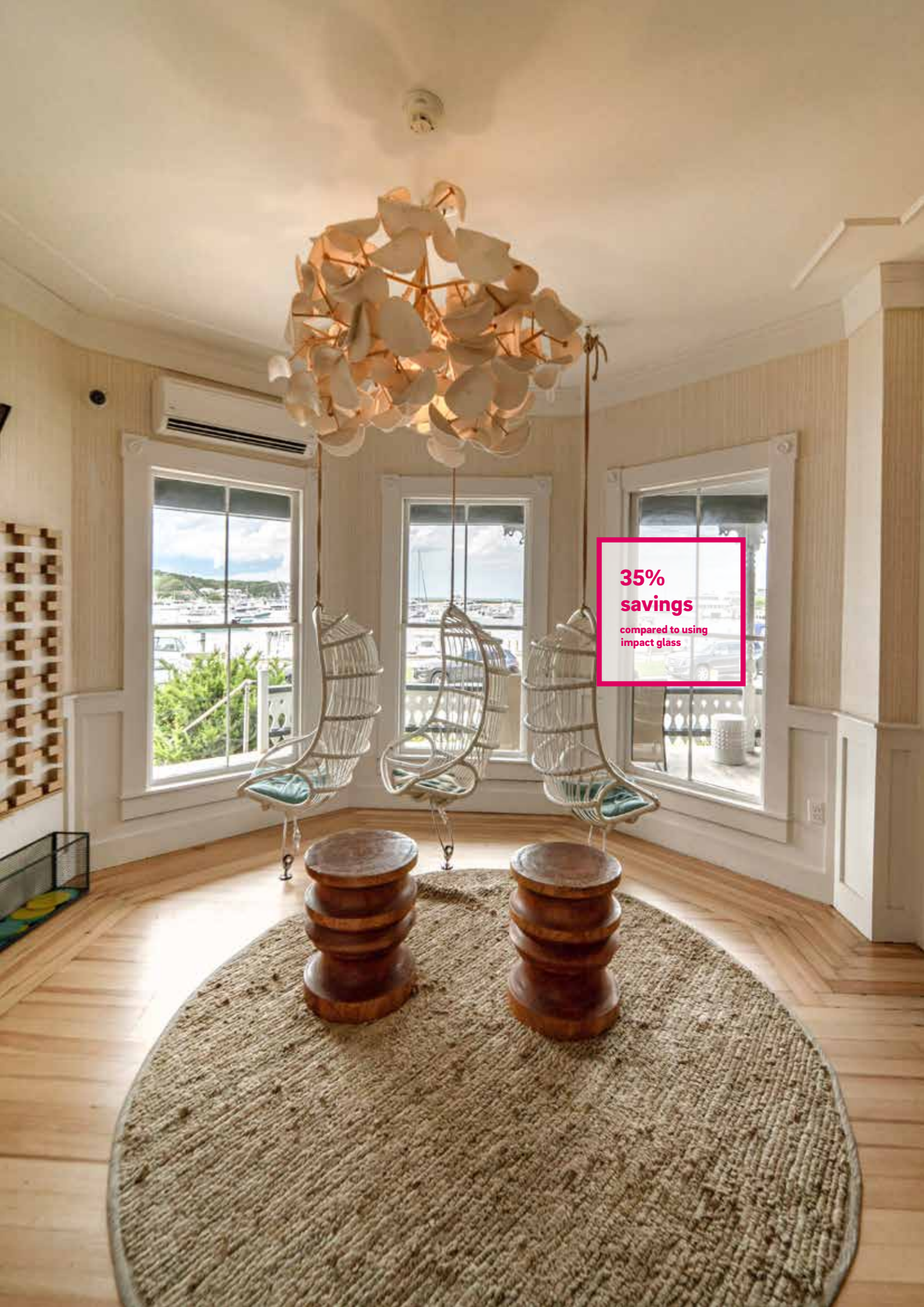




**Classic window design  
reengineered to provide superior  
protection to homes in hurricane-  
prone environments**







**35%  
savings**

compared to using  
impact glass

# Stand up to Mother Nature

## With RAUSHIELD

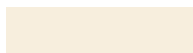
The simplicity of a side-load with high performance for routine days and the most extreme tropical weather days: System 190 with RAUSHIELD™ storm protection system is an economical new construction and replacement solution specially designed with the strength, durability and resiliency to withstand hurricane-force winds and flying debris.

This patented innovation integrated into the frame of our established System 190 hung-slider allows builders to offer a superior alternative to unsightly brackets or visible anchors that does not disrupt the building façade. With RAUSHIELD, no additional locks are needed when a storm is approaching or evacuation time is imminent.

### Core profile colors



White



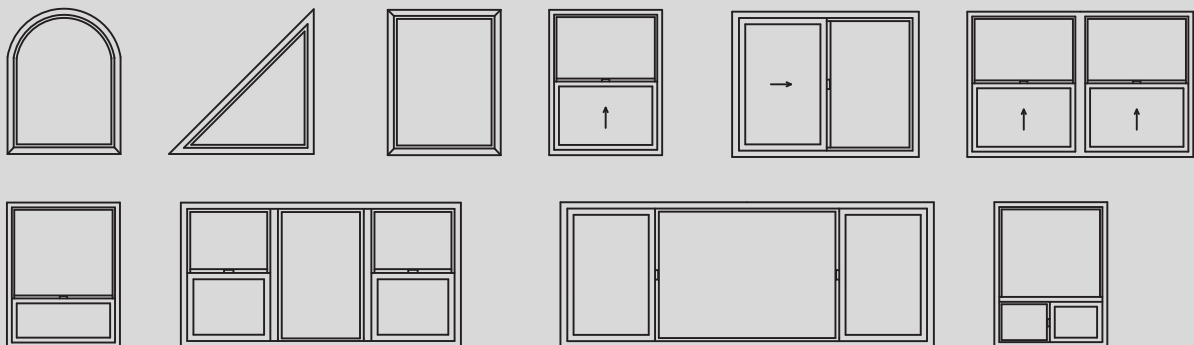
Beige



Clay



### Window configurations





## Robust design



### Performance Summary

Impact: DP50

Structural: up to LC-PG50

Acoustical: up to STC 32; OITC 27

Thermal: down to 0.24\*

\* based on simulation

**Up to 3/4 in (19 mm) glazing capability** provides excellent acoustical and energy performance properties to meet current standards

**Interlocking sashes with weather seals** guard against air and water infiltration

**Pocket sill with frame accessory grooves** provides structural integrity. Same frame for hung and slider reduces SKUs

**Unique frame design with patented integral anchor points** allows for quick, easy installation of storm protection fabric that meets Zone 3 wind load requirements

**Main profiles engineered with multiple chambers** increase strength and energy performance while allowing efficient water drainage

**Integral nailfin** provides option for use in new-construction and replacement applications

**Versatile frame design** accepts a variety of screen styles including FlexScreen



# Proven performance

## Established profile system

During more than 15 years on the market, System 190 has distinguished itself as a high-performance, cost-competitive window design. The enhanced 3 1/4 in (83 mm) frame with RAUSHIELD is tested to meet or exceed strict building codes in harsh coastal regions.

### Side-load simplicity

Impact glass is heavy, costly and requires curing that extends fabrication lead times by at least two weeks. The innovative RAUSHIELD storm fabric fastening system reduces the cost of supplying impact-compliant windows by at least 35% compared to using impact glass. Builders can use typical window installers and avoid the hassles of hiring hard-to-find anchor contractors.



Hurricane impact resistant



Water resistant



Lighter panels, easier to install



Reduces fabrication lead time

**For more information, visit**  
[na.rehau.com/raushield](https://na.rehau.com/raushield)

**United States**  
Phone (800) 247-9445

For updates to this publication, visit [na.rehau.com/resourcecenter](https://na.rehau.com/resourcecenter)

The information contained herein is believed to be reliable, but no representations, guarantees or warranties of any kind are made as to its accuracy, suitability for particular applications or the results to be obtained therefrom. Before using, the user will determine suitability of the information for user's intended use and shall assume all risk and liability in connection therewith.

© 2020 REHAU

190.902 10.2020