



---

## RAUVARIO PLINTH SYSTEMS

The basis for modern kitchen design

---

---

# RAUVARIO PLINTH SYSTEMS

## Product series overview

---



RAUVARIO plinth systems form the basis for modern kitchen design. They are both functional and decorative elements for any kitchen, comprising, Plinth covers, 90° corner, 180° corners, end caps and plinth sealing profiles.

Attention to detail is an important part of kitchen design. Gone are the days when a range of components with different surface finishes had to be painstakingly matched to one another. REHAU's metallic design-match concept enables you to work with and accentuate uniform surface finishes. Whether this is aluminium or uni color white, silver, black as REHAU offers real value. From Tambour to plinths, we always provide you with the best of both worlds. The functionality and process ability of polymer is combined with the aesthetic appeal and tactile characteristics of aluminium.

## CONTENTS

<b><u>Overview of benefits</u></b>	<b>4</b>
<b><u>RAUVARIO plinth systems</u></b>	<b>2</b>
<u>Nominal height 100 mm</u>	5
<u>Nominal height 150 mm</u>	6
<u>Accessories</u>	6



---

# RAUVARIO

## Overview of benefits

---

RAUVARIO plinth systems have served as the basis for modern kitchen design for almost two decades.



Snap fitted clips for plinth cover used for quick and easy fastening.



Watertight sealing lip provides reliable Protection against moisture and dirt



Two nominal heights Coordinated With the kitchen design:  
100 and 150 mm

# RAUVARIO PLINGTH SYSTEM

Nominal height 100mm

Plinth covers are the functional and decorative elements for every interior. It has a hollow chambered profile with soft transparent sealing lip that creates a reliable barrier against dirt and moisture.

**Function:**

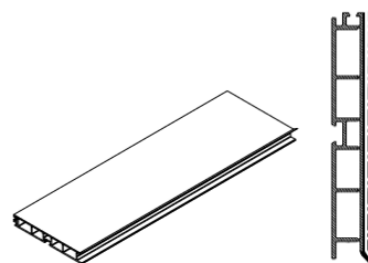
Protect against moisture and dirt ingressed underneath the cabinets hides the leg and thus improves the aesthetics

**Size available:**

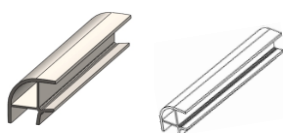
- 100mm
- 150mm

**Colors Available:**

- Black
- Silver
- White
- Aluminium



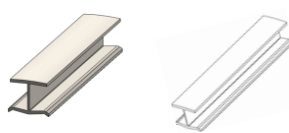
Article No. Plinth cover 100mm	Color Description
304516-013	Black
304516-002	Silver
304516-014	White
317900-002	Aluminium



Article No. Plinth connector 90°	Color Description
306829-008	Black
306829-009	Silver
306829-010	White
317898-002	Aluminium

**Function:**

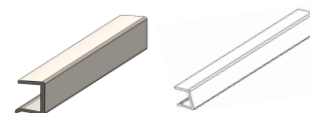
Matching connectors for plinth cover to ensure proper sealing at 90°



Article No. Plinth connector Straight	Color Description
306839-004	Black
306839-009	Silver
306839-010	White
317896-002	Aluminium

**Function:**

Matching connectors for plinth cover to ensure proper sealing at 180°

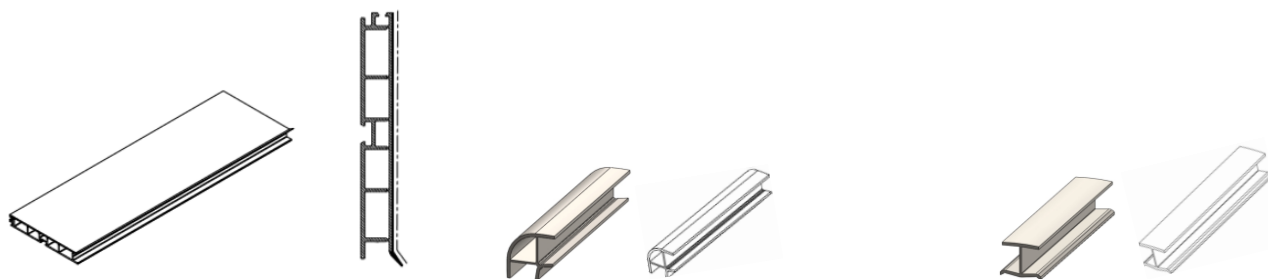


End Cap	Color Description
306837-008	Black
306837-009	Silver
306837-010	White

**Function:**

Conceals cross section of plinth cover.

# RAUVARIO PLINTH SYSTEM



Article No.	Color Description
317899-002	Aluminium

Article No.	Color Description
317897-002	Aluminium

Article No.	Color Description
317895-002	Aluminium

### Function:

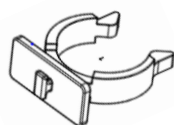
Matching connectors for plinth cover to ensure proper sealing at 90°

### Function:

Matching connectors for plinth cover to ensure proper sealing at 180°

# RAUVARIO PLINTH SYSTEM

## Accessories



Article No.	Color Description
315786-001	Black

### REHAU Snap Fitting

#### Function:

Snap fit clit is use as a connector between leg and plinth cover. It makes the installation of plinth cover easier.

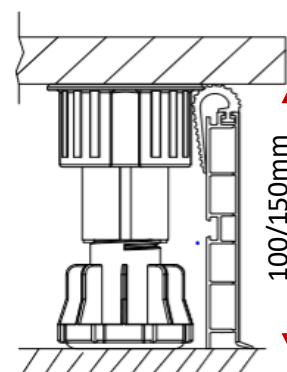


Article No.	Color Description
314082-001	Black

### REHAU Plinth flap

#### Function:

Plinth flap maintains the engagement of lip with ground that creates a reliable barrier against dirt and moisture.



This document is protected by copyright. All rights based on this are reserved. No part of this publication may be translated, reproduced or transmitted in any form or by any similar means, electronic or mechanical, photocopying, recording or otherwise, or stored in a data retrieval system.

Our verbal and written advice relating to technical applications is based on experience and is correct to the best of our knowledge, but is given without obligation.

The use of REHAU products in conditions that are beyond our control or for applications other than those specified releases us from any obligation in regard to claims made in respect of the products.

We recommend that the suitability of any REHAU product for the intended application should be checked. Utilisation and processing of our products are beyond our control and are therefore exclusively your responsibility. In the event that a liability is nevertheless considered, any compensation will be limited to the value of the goods supplied by us and used by you.

Our warranty assumes consistent quality of our products in accordance with our specification and in accordance with our general conditions of sale.

## REHAU Branches in India

### DELHI EXPERIENCE CENTER

REHAU Polymers Pvt. Ltd.  
88, 2nd Floor, Furniture Block,  
Kirti Nagar, New Delhi - 110015, India  
Contact Details: +91 11 4848 5600

### MUMBAI SALES OFFICE

REHAU Polymers Pvt. Ltd.  
1204, V Times Square, Plot no. 3, Sec - 15  
CBD Belapur, Navi Mumbai - 400614, India  
Contact Details: +91 22 2757 4783 / 7117 6700

### BENGALURU EXPERIENCE CENTER

REHAU Polymers Pvt. Ltd.  
48, Richmond Road,  
Bengaluru - 560025, India  
Contact Details: +91 80 2222 0014

### PUNE SALES OFFICE

REHAU Polymers Pvt. Ltd.  
Office No. 601/602, 6th Floor, Nucleus Mall,  
1 Church Road, Camp,  
Pune - 411001, Maharashtra, India

Email: [infoindia@rehau.com](mailto:infoindia@rehau.com) • Website: [www.rehau.co.in](http://www.rehau.co.in) • Toll Free No.: 1800 2100 011

Follow REHAU India:

