

WOOD | LINE



SIBU | DESIGN
we decorate.



WL Maple Alpine

2600 x 1000 / NA 19018 / SA 19029

PRS*

WL Nutwood Country

2600 x 1000 / NA 19017 / SA 19028

PRS*

WL Nutwood

2600 x 1000 / NA 19019 / SA 19030

PRS*

WL Sessile OAK

2600 x 1000 / NA 22786 / SA 22787

PRS*

WL Maple Alpine Antigrav

2600 x 1000 / NA 19570

WL Nutwood Country Antigrav

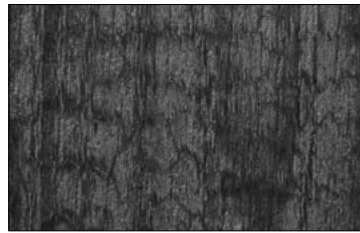
2600 x 1000 / NA 19569

WL Nutwood Antigrav

2600 x 1000 / NA 19568

WL Sessile OAK Antigrav

2600 x 1000 / NA 22785



WL Wenge Wood

2600 x 1000 / NA 19016 / SA 19027

PRS*

WL Carbonized Wood

2600 x 1000 / NA 20157 / SA 20224

PRS*

WL OAK TREE Light

2600 x 1000 / NA 17278 / SA 17279

PR+*

WL Wenge Wood Antigrav

2600 x 1000 / NA 19571

WL Carbonized Wood Antigrav

2600 x 1000 / NA 20158

WL OAK TREE Light Antigrav

2600 x 1000 / NA 19561



□ WL Carbonized Wood

PRS* Siebdruck möglich. Vor dem Druck ist eine Corona- oder Plasma-Vorbehandlung der Oberfläche durchzuführen. Auf Wunsch vorbehandelt erhältlich. / Screen printing possible. Prior to printing a corona or plasma treatment has to be carried out. By request available in pre-treated version. / Impression sérigraphie possibles. Avant d'imprimer un traitement Corona ou Plasma doit être réalisé. Nous pouvons réaliser ce traitement sur demande. / Возможна трафаретная печать. Перед печатью выполнить обработку поверхности методами Corona или Plasm. / Possibilità di stampa serigrafica. Prima della stampa è necessario sottoporre la superficie ad un pretrattamento corona o al plasma. Disponibile con pretrattamento, su richiesta. / Impresión serigrafia posible. Antes de la impresión es necesario un pretratamiento corona o con plasma de la superficie. A petición, disponible con tratamiento previo.

NA Nicht klebend / Non-adhesive / Non adhésif / не самоклеящийся / Non adesivo / No adhesive

SA Selbstklebend / Strongly adhesive / Autocollant / сильно самоклеящийся / Molto adesivo / Adhesivo fuerte.

i Detailliertere Infos dazu finden Sie im OVERVIEW und auf www.sibu.at / More detailed information you will find in our OVERVIEW and on www.sibu.at / Des informations supplémentaires vous trouvez dans notre catalogue OVERVIEW et sur www.sibu.at. / Подробную информацию Вы найдете в OVERVIEW и на www.sibu.at / Per informazioni più dettagliate al riguardo, consultare OVERVIEW e il sito www.sibu.at / Encontrará información detallada al respecto en el catálogo OVERVIEW y en www.sibu.at

DE SIBU DESIGN goes Nature - mit der Produktlinie WOOD-LINE bieten wir Ihnen trendige Holzfarben mit lebendiger Holzstruktur. Die WOOD-LINE bringt einen Hauch Natur in jedes Zuhause.

EN SIBU DESIGN goes nature - and its WOOD-LINE product range offers fashionable shades with an animate grain structure. WOOD-LINE brings a breath of the forest into every home.

FR SIBU DESIGN, Nature pure – avec la gamme WOOD-LINE, nous proposons des effets bois naturels avec structures et veinures du bois quasi véritables ! La famille WOOD-LINE apportera une touche de nature dans chacune de vos pièces.

RU SIBU Design идет в природу - с новой линией продукции WOOD-LINE мы предлагаем Вам модные древесные декоры с живой текстурой. WOOD-LINE приносит дыхание природы в каждое жилье.

IT SIBU DESIGN si ispira alla natura – e la sua gamma WOOD-LINE offre sfumature eleganti con una struttura tridimensionale. WOOD-LINE porta il bosco in ogni casa.

ES SIBU DESIGN se vuelve natural – y su colección de productos WOOD-LINE ofrece tonalidades a la moda con una estructura de madera animada. WOOD-LINE trae el aire del bosque a cada hogar.



WL Maple Alpine



WL Nutwood Country



WL Nutwood



WL Carbonized Wood



Customer Service Contacts

Hours Monday to Friday, 8 am to 6:30 pm EST

Email orders.us@rehau.com

www.na.rehau.com/sibu

United States

Phone (888) 734-2810 Fax (616) 285-7622

Canada

Phone (888) 905-0345 Fax (514) 905-0490

For updates to publication, visit na.rehau.com/resourcecenter

The information contained herein is believed to be reliable, but no representations, guarantees or warranties of any kind are made as to its accuracy, suitability for particular applications or the results to be obtained therefrom. Before using, the user will determine suitability of the information for user's intended use and shall assume all risk and liability in connection therewith.

SIBU | DESIGN
we decorate.

SIBU DESIGN GmbH & CoKG
Jupiterstraße 8 | 4452 Temberg | Austria | Tel: +43 (0) 7256.6025.0
Fax: +43 (0) 7256.7020 | E-mail: info@sibu.at | www.sibu.at

SIBU|DESIGN_0121_500