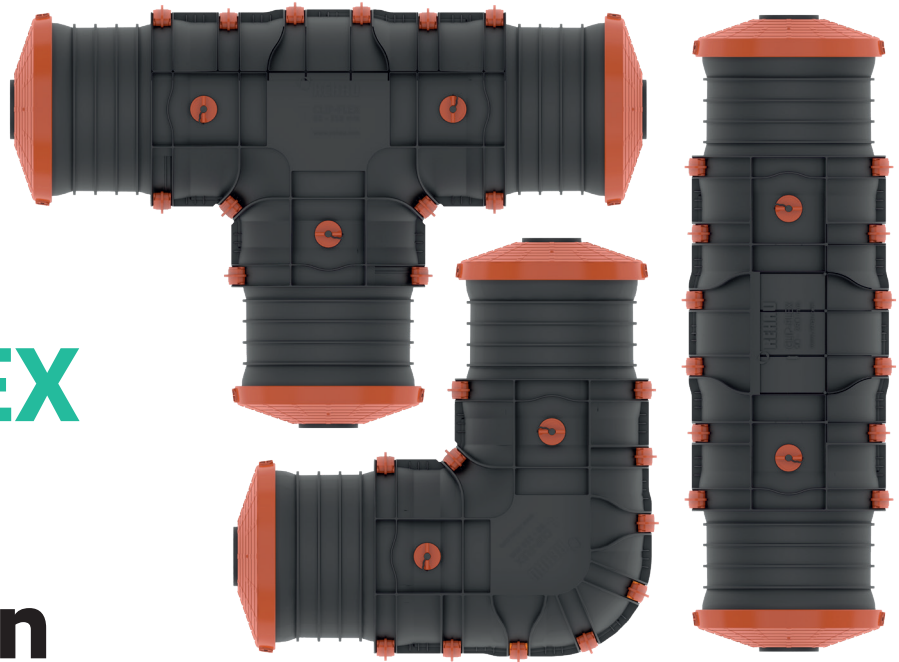


Engineering progress  
Enhancing lives

# CLIP-FLEX

## A shroud revolution

The best shroud we have ever built.  
[www.rehau.uk/clip-flex](http://www.rehau.uk/clip-flex)

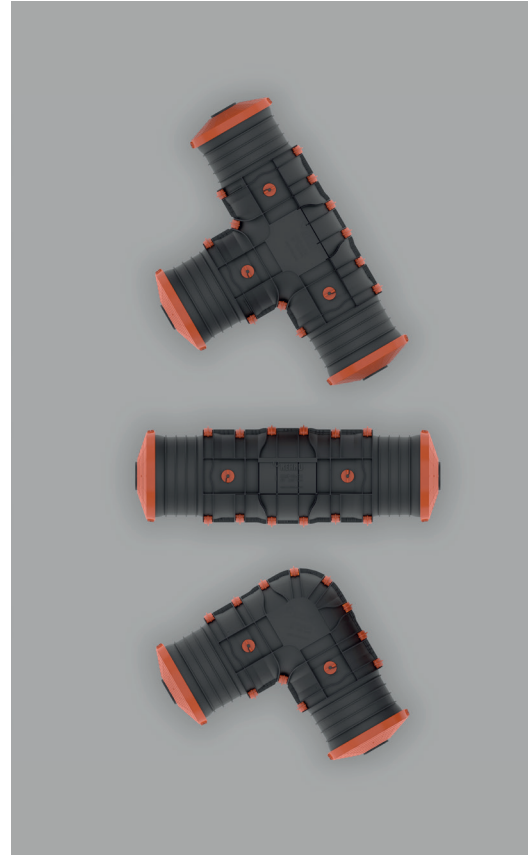


# 3 shapes. 2 sizes. 1 masterpiece.

Our new CLIP-FLEX shroud not only marks a joint in the district heating network.

It is also a new powerful link for our district heating system solutions that have been in use for decades. This system integration is only available from REHAU.

Since your district heating network is an essential utility, our long-lasting product solutions enable you to reliably provide people with heat for generations.



## More universal.

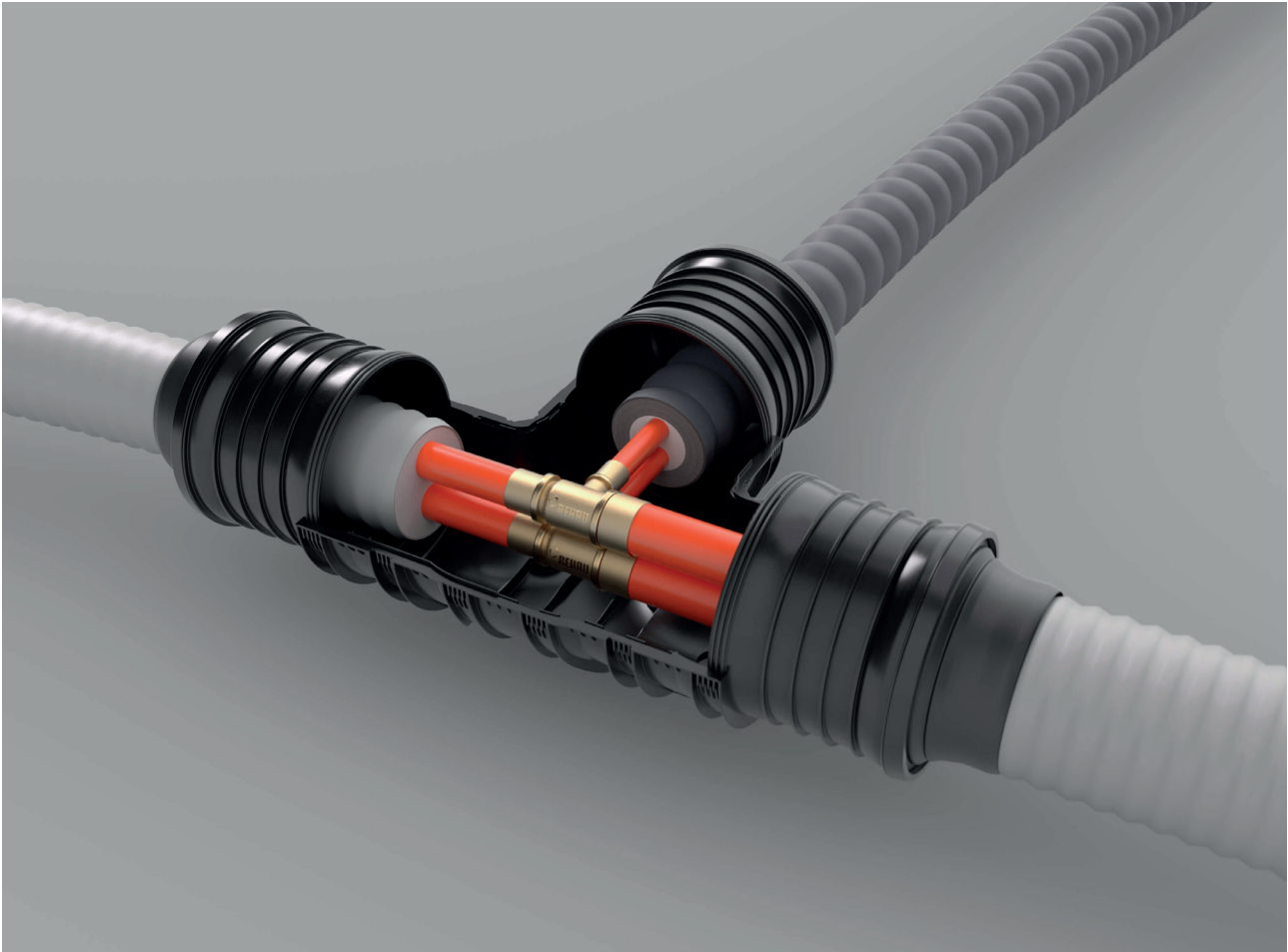
Our integrated EPDM sealing system ensures that you can combine various REHAU pipe types and diameters easily – without the need for separate sealing rings.

Our new CLIP-FLEX shroud can withstand water pressure of 0.3 bar and is available as a T/I/L version in two diameters sizes; **90-150mm and 90-250mm.**



**Extremely  
convenient,  
universally  
applicable**

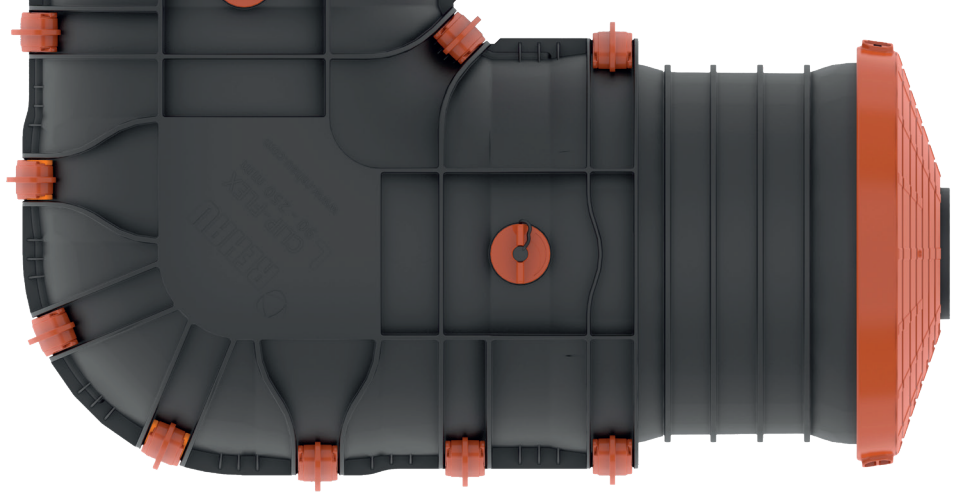




## Less is more.

Our new CLIP-FLEX shroud requires 30% less transport and storage volume, while offering up to 20% more room for fittings and installation. This is made possible thanks to a combination of compact shroud half-shells and integrated connecting branches. It's universal in use,

as it fits all REHAU district heating pipes with diameters from 90 to 250mm. You get more creative freedom and additional application options thanks to new component combinations – all in all, installation is considerably simplified for you.

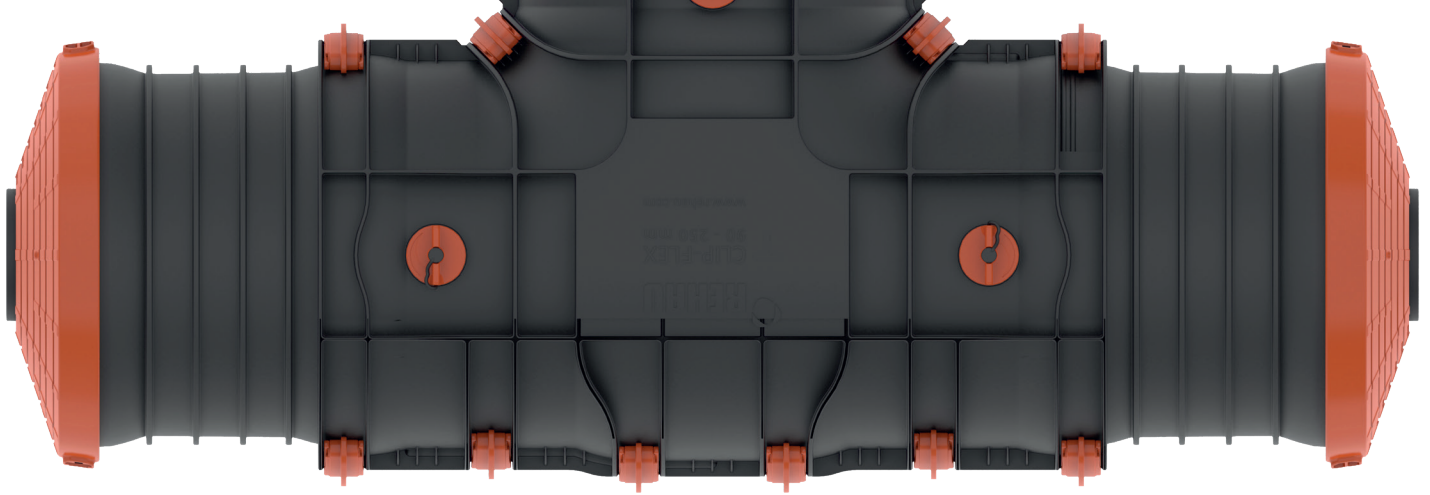


## More flexible.

Inspired by experience, optimised with passion: we have developed a ball joint function for our new CLIP-FLEX shroud that allows you to adjust for extreme angle deviations of up to 22.5° in every direction.

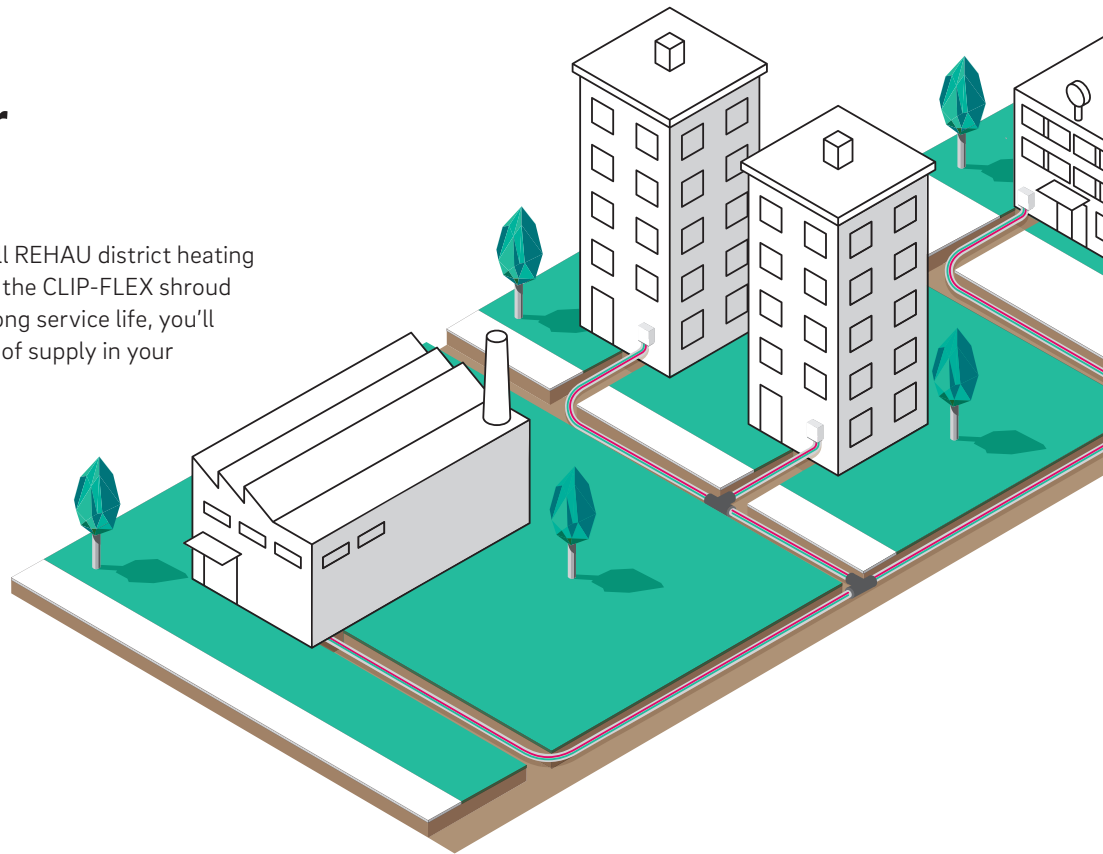
**Flexibility  
has  
never been  
so easy**



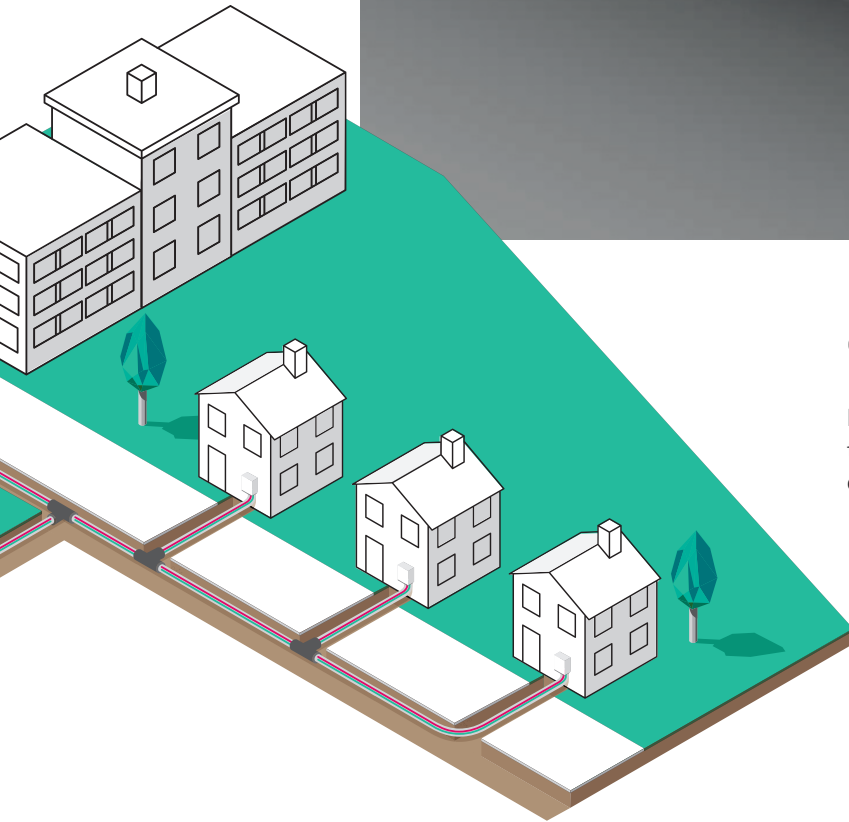


## Your solution for supply security.

The shroud is compatible with all REHAU district heating pipes from 90 to 250mm. Since the CLIP-FLEX shroud is designed for reliability and a long service life, you'll benefit from maximum security of supply in your heating network.



**Quick,  
secure  
and  
proven**



## **Clip technology.**

For increased efficiency on construction sites, the clip technology design provides quick, tool-free and secure closure of the half shells.



## New foam technology

REHAU's 2K-D foam cans are designed for improved safety and handling on site, whilst still using high quality polyurethane foam. Instead of 6 different foam bottle sizes, there is only 1 can size which is used in multiples. It can be used over a longer time period than foam mixed on site and it's also possible to install at lower temperatures on the construction site.

## Service you can rely on



### Largest UK stock of district heating pipes

- Full cutting service
- 25-160mm in both RAUVITHERM and RAUTHERMEX



### Proud to support UK production

- Only UK manufacturer of PE-Xa district heating pipes
- Estimated 29% CO<sub>2</sub> reduction
- Production started in 2012



### UK sales & technical support

- 3 regional sales offices across UK/ROI with specialist district heating sales team
- On-site support available
- CIBSE-approved CPD presentations on heat networks



Follow us  
[@REHAUrenewables](https://twitter.com/REHAUrenewables)



Find us  
[REHAU.UK](https://www.rehau.uk)



See us  
[REHAU Ltd](https://www.rehau.com)



Connect to us  
[REHAU](https://www.rehau.com)

© REHAU Ltd  
Hill Court, Walford,  
Ross-on-Wye, HR9 5QN

This document is protected by copyright. All rights based on this are reserved. No part of this publication may be translated, reproduced or transmitted in any form or by any similar means, electronic or mechanical, photocopying, recording or otherwise, or stored in a data retrieval system.

05.2023